

LOC I-SAC 110.3	APP CRS 019°	Rwy Ldg TDZE Apt Elev	5503 21 24
---------------------------	------------------------	-----------------------------	---------------------------------------

ILS or LOC RWY 2

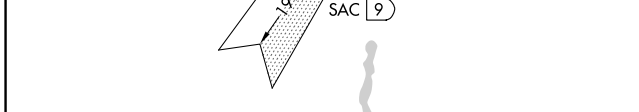
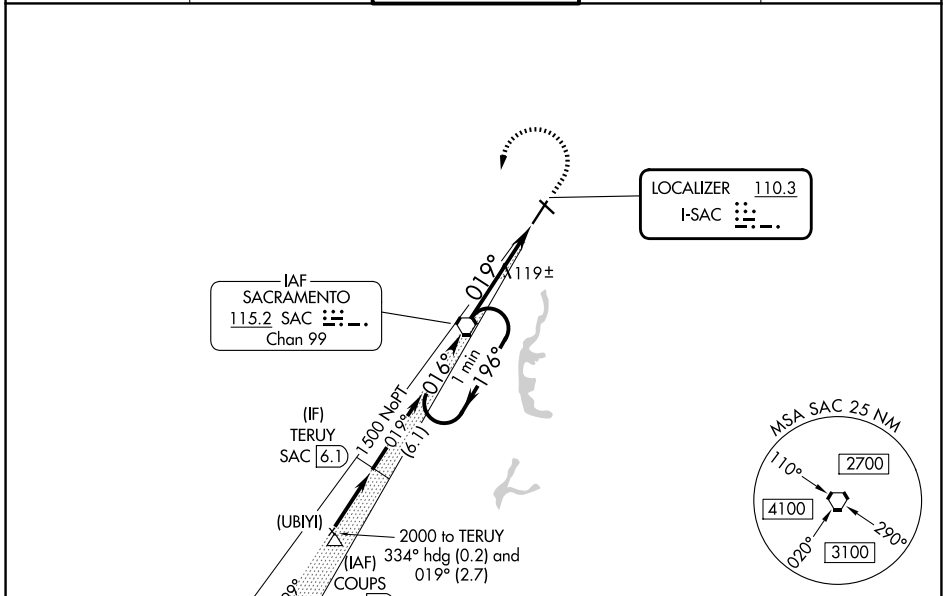
SACRAMENTO EXEC (SAC)

▼ When local altimeter setting not received, use Sacramento Intl altimeter setting and increase DA to 322 feet, increase all MDAs 40 feet and Circling Cat D visibility ¼ SM. **▲** Autopilot coupled approach NA below 335 feet. For inop MALSRS, increase S-ILS 2 all Cats visibility to ¾ SM and S-LOC 2 Cat C/D visibility to 1 SM. For inop MALSRS when using Sacramento Intl altimeter setting, increase S-ILS 2 all Cats visibility to ¾ SM.



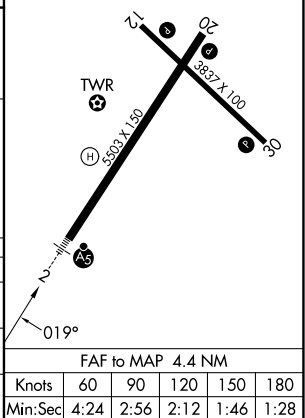
MISSED APPROACH:
Climb to 600 then climbing left turn to 1600 direct SAC VORTAC and hold.

ATIS 118.075	NORCAL APP CON 125.25 257.9	EXEC TOWER* 119.5 (CTAF) 278.8	GND CON 125.0	UNICOM 122.95
------------------------	---------------------------------------	---	-------------------------	-------------------------



ELEV 24	TDZE 21
REIL Rwy 12, 20 and 30	
MIRL Rwy 2-20 and 12-30	

CATEGORY	A	B	C	D
S-ILS 2	294-½ 273 (300-½)			
S-LOC 2	380-½	359 (400-½)	380-⅝	359 (400-⅝)
CIRCLING	500-1 476 (500-1)	520-1 496 (500-1)	560-1½ 536 (600-1½)	800-2½ 776 (800-2½)



SW-2, 14 MAY 2026 to 11 JUN 2026

SW-2, 14 MAY 2026 to 11 JUN 2026