

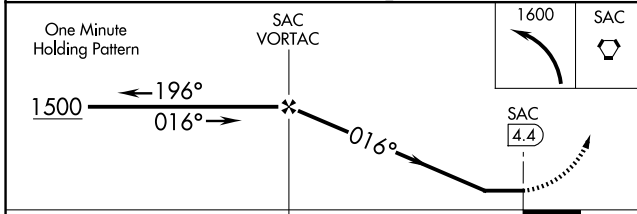
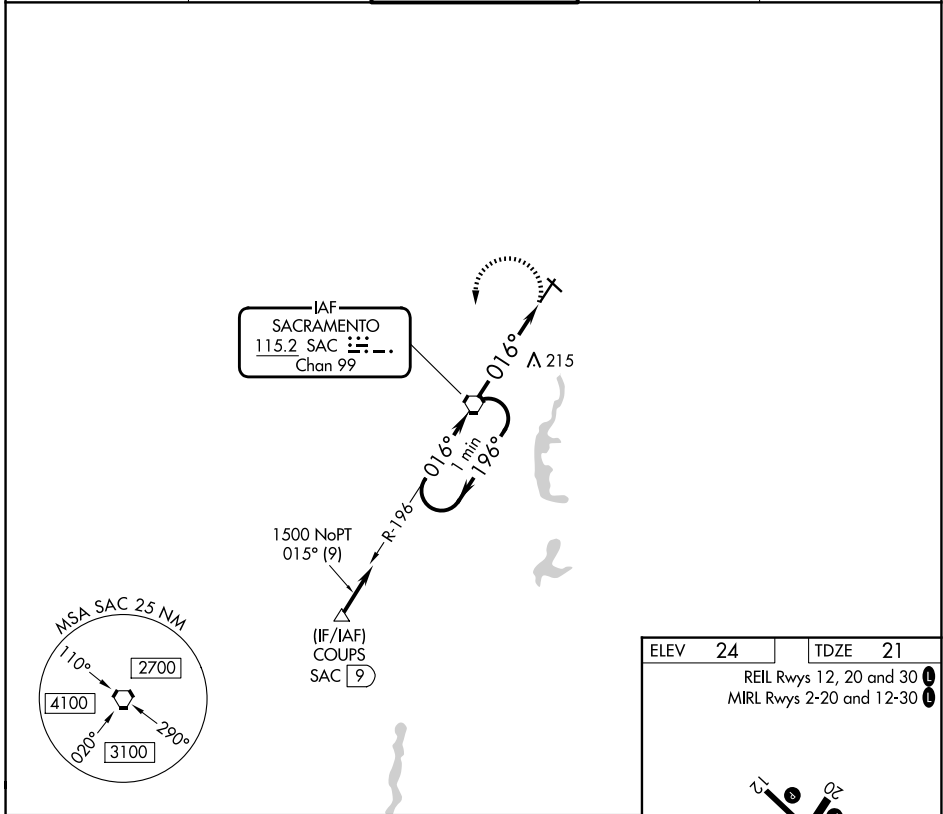
VORTAC SAC 115.2 Chan 99	APP CRS 016°	Rwy Ldg 5503 TDZE 21 Apt Elev 24
--	------------------------	---

VOR RWY 2

SACRAMENTO EXEC (SAC)

<p>When local altimeter setting not received, use Sacramento Intl altimeter setting and increase all MDAs 40 feet and Circling Cat D visibility ¼ SM.</p>	<p>MALS</p>	<p>MISSED APPROACH: Climbing left turn to 1600 direct SAC VORTAC and hold.</p>

ATIS 118.075	NORCAL APP CON 125.25 257.9	EXEC TOWER* 119.5 (CTAF) 0 278.8	GND CON 125.0	UNICOM 122.95
------------------------	---------------------------------------	--	-------------------------	-------------------------



ELEV 24	TDZE 21
REIL Rwy 12, 20 and 30	
MIRL Rwy 2-20 and 12-30	

TWR

AS

5503 X 180

3832 X 100

12

20

30

2-20

016°

FAF to MAP 4.4 NM

Knots	60	90	120	150	180
Min:Sec	4:24	2:56	2:12	1:46	1:28

CATEGORY	A	B	C	D
S-2	520-½	499 (500-½)	520-1	499 (500-1)
CIRCLING	520-1	496 (500-1)	560-1½ 536 (600-1½)	800-2½ 776 (800-2½)

SW-2, 14 MAY 2026 to 11 JUN 2026

SW-2, 14 MAY 2026 to 11 JUN 2026