

# CHIEF NINE DEPARTURE

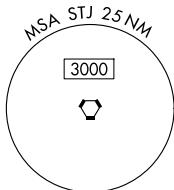
AL-359 (FAA)

ROSECRANS MEML (STJ)  
ST. JOSEPH, MISSOURI

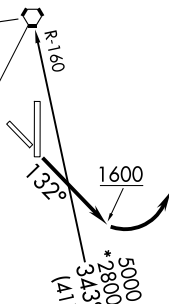
**TOP ALTITUDE:  
10000**

RADAR required.

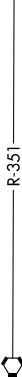
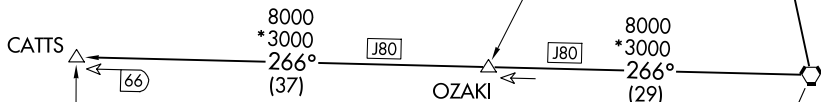
ST. JOSEPH DEP CON \*  
120.35 360.8  
ATIS  
125.05



ST. JOSEPH  
115.5 STJ  
Chan 102



KANSAS CITY  
113.25 MCI  
Chan 79(Y)



EMPORIA  
112.8 EMP  
Chan 75

### TAKEOFF MINIMUMS

Rwys 13, 17, 35: Standard.

Rwy 31: 400-2¼ or standard with minimum climb of 340' per NM to 1300.

NOTE: Chart not to scale.

### DEPARTURE ROUTE DESCRIPTION

**TAKEOFF RUNWAY 13:** Climb on heading 132° to 1600 before turning left, thence . . . . .climb on assigned heading for RADAR vectors to appropriate route. Maintain 10000 or as assigned by ATC, expect filed altitude 10 minutes after departure.

**TAKEOFF ALL OTHER RUNWAYS:** Climb on assigned heading for RADAR vectors to appropriate route. Maintain 10000 or as assigned by ATC, expect filed altitude 10 minutes after departure.

**CATTS TRANSITION (CHIEF9.CATTS):** From over MCI VORTAC on MCI R-266 to CATTS.

**ST. JOSEPH TRANSITION (CHIEF9.STJ):** From over MCI VORTAC on MCI R-343 and STJ R-160 to STJ VORTAC.

# CHIEF NINE DEPARTURE