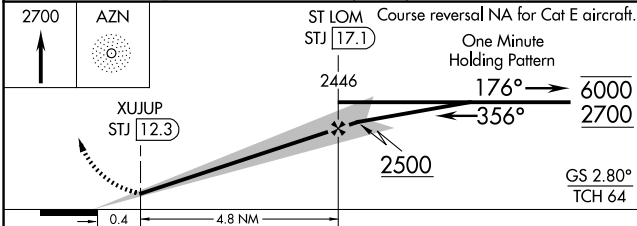
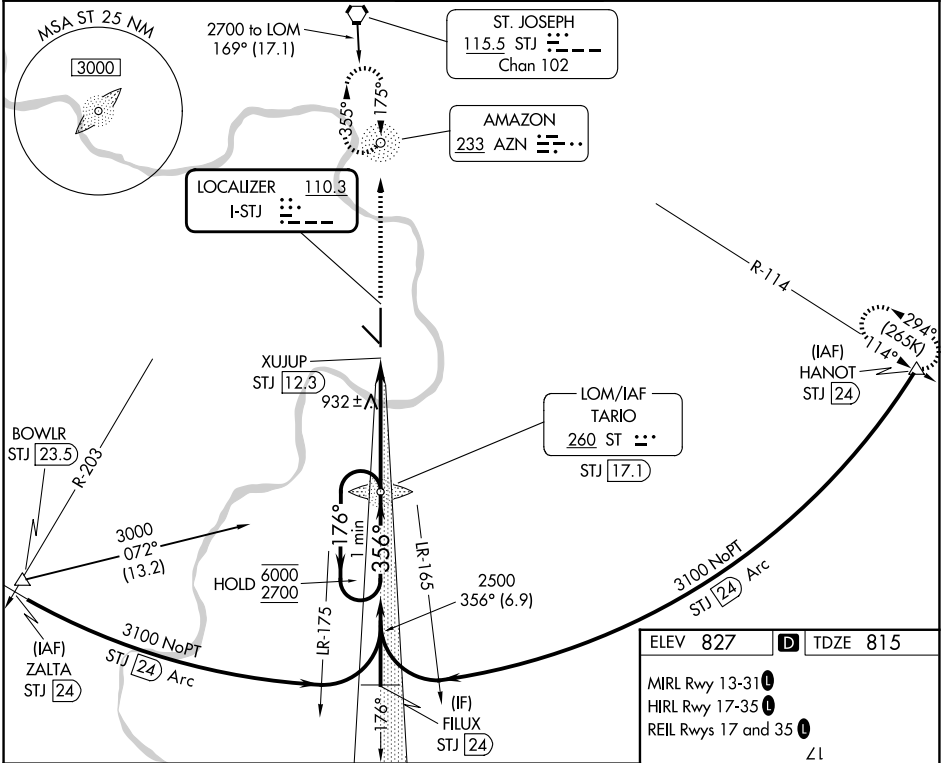


LOC I-STJ 110.3	APP CRS 356°	Rwy Ldg TDZE Apt Elev	8061 815 827
---------------------------	------------------------	-----------------------------	---

ILS or LOC RWY 35

ROSECRANS MEML (STJ)

ADF or TACAN required.		MISSED APPROACH: Climb to 2700 direct AZN NDB and hold. (TACAN aircraft climb to 2700 then climbing right turn to 3100 on STJ VORTAC R-114 to HANOT/24 DME and hold NW, LT, 114° inbound).				
⚠ DME from STJ VORTAC, simultaneous reception of I-STJ and STJ DME required. ⚠ ASR/PAR		ATIS 125.05	ST. JOSEPH APP CON ★ 120.35 360.8	ST. JOSEPH TOWER ★ 126.9 (CTAF) 239.0	GND CON 121.9	UNICOM 122.95



ELEV 827	TDZE 815
MIRL Rwy 13-31	HIRL Rwy 17-35
REIL Rws 17 and 35	
FAF to MAP 4.8 NM Knots: 60 90 120 150 180 Min:Sec: 4:48 3:12 2:24 1:55 1:36	

CATEGORY	A	B	C	D	E
S-ILS 35	1015/40 200 (200-¾)				
S-LOC 35	1200/55	385 (400-1)	1200/60 385 (400-1½)		
CIRCLING	1400-1 573 (600-1)	1420-1 593 (600-1)	1620-2¼ 793 (800-2¼)	1640-2¾ 813 (900-2¾)	1760-3 933 (1000-3)

NC-3, 14 MAY 2026 to 11 JUN 2026

NC-3, 14 MAY 2026 to 11 JUN 2026