

WAAS CH 77819 W35A	APP CRS 356°	Rwy Ldg TDZE Apt Elev	8061 815 827
---------------------------------	------------------------	-----------------------------	---

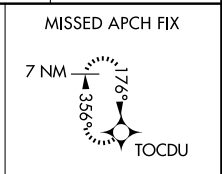
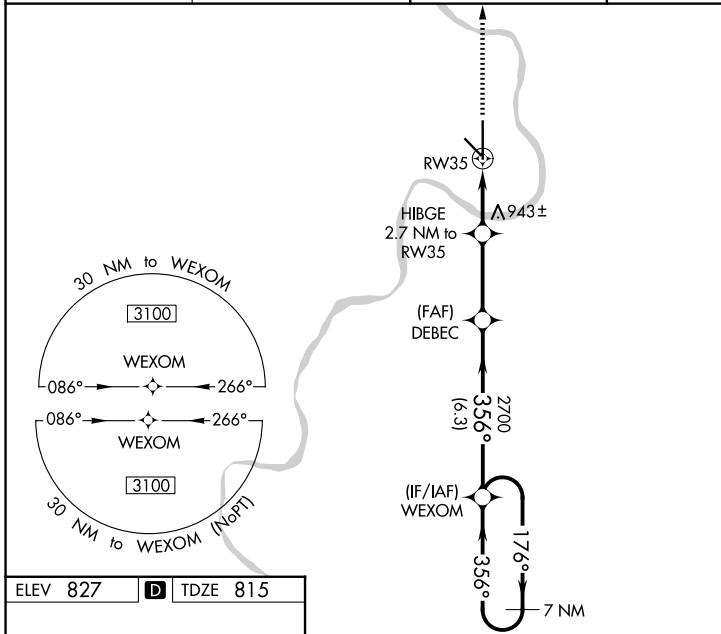
RNAV (GPS) RWY 35

ROSECRANS MEML (STJ)

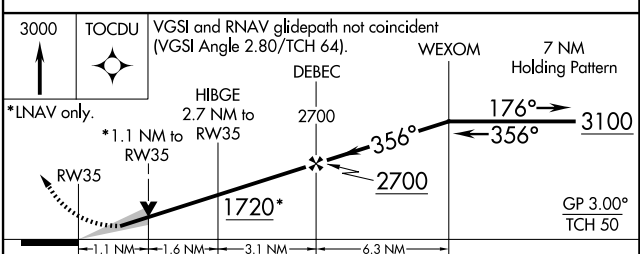
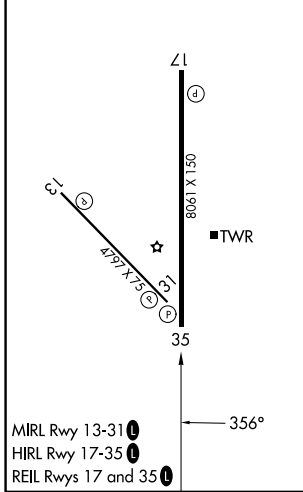
⚠ For uncompensated Baro-VNAV systems, LNAV/VNAV NA below -20°C (-4°F) or above 54°C (130°F). DME/DME RNP-0.3 NA. VDP and Baro-VNAV NA when using Kansas City ASR/PAR Inlt altimeter setting. When local altimeter setting not received, use Kansas City Inlt altimeter setting and increase all DA 97 feet and increase LPV all Cats visibility to RVR 5000, and LNAV/VNAV all Cats visibility to 1 1/4 mile; increase all MDA 100 feet, and increase LNAV Cat C/D/E visibility 1/4 mile, and Circling Cat C 1/2 mile, Cat D 1/2 mile.

MISSED APPROACH:
Climb to 3000 direct TOCDU and hold.

ATIS 125.05	ST. JOSEPH APP CON ★ 120.35 360.8	ST. JOSEPH TOWER ★ 126.9(CTAF) 0 239.0	GND CON 121.9	UNICOM 122.95
-----------------------	---	--	-------------------------	-------------------------



ELEV 827	D	TDZE 815
----------	----------	----------



CATEGORY	A	B	C	D	E
LPV DA		1015/40	200 (200-3/4)		
LNAV/VNAV DA		1096/45	281 (300-7/8)		
LNAV MDA	1200/55	385 (400-1)	1200/60	385 (400-1 1/4)	
CIRCLING	1400-1	1420-1	1620-2 1/4	1640-2 3/4	1760-3
	573 (600-1)	593 (600-1)	793 (800-2 1/4)	813 (900-2 3/4)	933 (1000-3)

NC-3, 14 MAY 2026 to 11 JUN 2026

NC-3, 14 MAY 2026 to 11 JUN 2026