

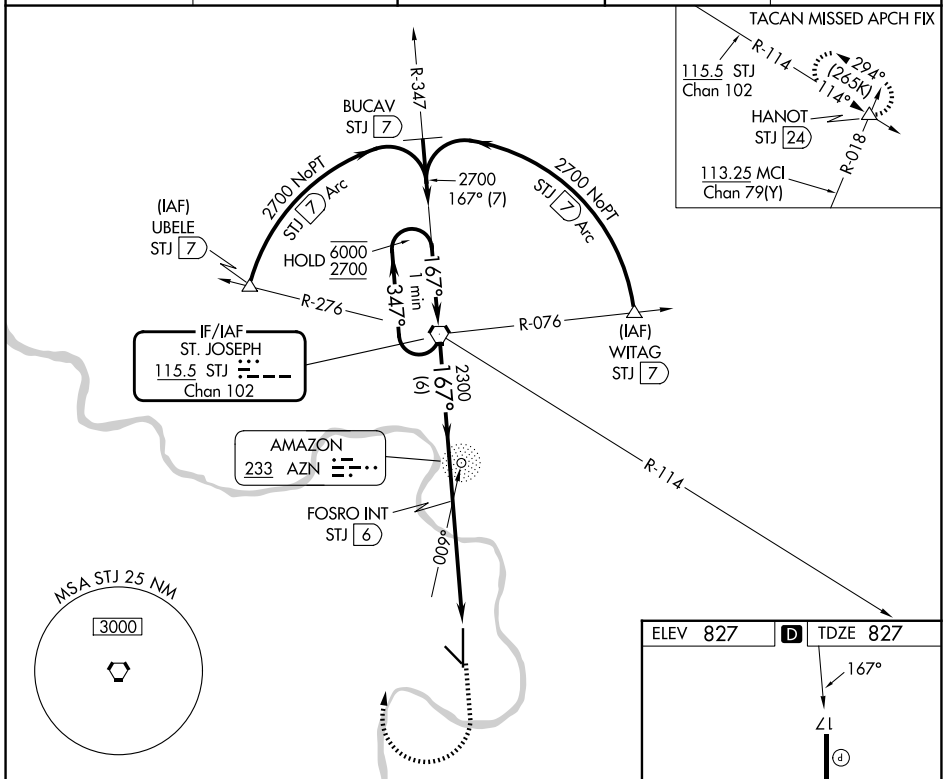
VORTAC STJ	APP CRS	Rwy Ldg	8061
<b>115.5</b>	<b>167°</b>	TDZE	827
Chan 102		Apt Elev	827

# VOR or TACAN RWY 17

ROSECRANS MEML (STJ)

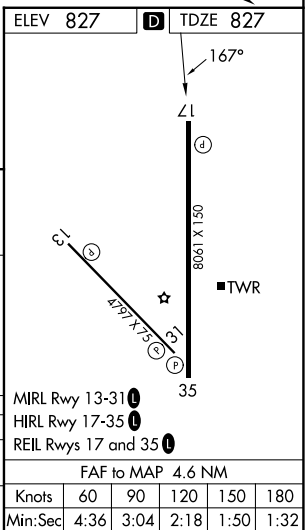
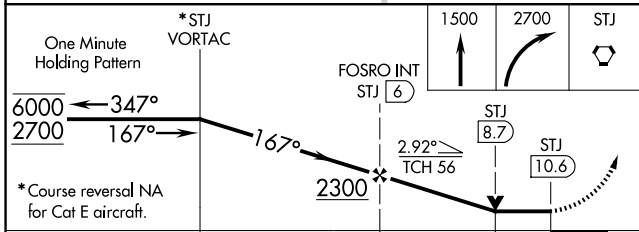
ADF or DME required.		MISSED APPROACH: Climb to 1500 then climbing right turn to 2700 direct STJ VORTAC and hold. (TACAN aircraft climb to 2300 then climbing left turn to 3100 direct HANOT INT/STJ 24 DME and hold NW, LT, 114° inbound, GPS required).		
<p>▽ Missed approach to STJ VORTAC NA for Cat E aircraft.</p> <p>ASR/PAR</p>				

ATIS <b>125.05</b>	ST. JOSEPH APP CON * <b>120.35 360.8</b>	ST. JOSEPH TOWER * <b>126.9 (CTAF) 239.0</b>	GND CON <b>121.9</b>	UNICOM <b>122.95</b>
-----------------------	---	---	-------------------------	-------------------------



NC-3, 14 MAY 2026 to 11 JUN 2026

NC-3, 14 MAY 2026 to 11 JUN 2026



One Minute Holding Pattern	*STJ VORTAC	1500	2700	STJ	
6000 ← 347°	← 167° →	167°	167°		
*Course reversal NA for Cat E aircraft.		2.92° TCH 56	STJ (8.7)	STJ (10.6)	
		6 NM	2.7 NM	1.9 NM	
CATEGORY	A	B	C	D	E
S-17	1500-1	673 (700-1)	1500-1 $\frac{7}{8}$	673 (700-1 $\frac{7}{8}$ )	
CIRCLING	1500-1	673 (700-1)	1620-2 $\frac{1}{4}$ 793 (800-2 $\frac{1}{4}$ )	1640-2 $\frac{3}{4}$ 813 (900-2 $\frac{3}{4}$ )	1760-3 933 (1000-3)

ELEV 827	TDZE 827
167°	150
35	TWR
MIRL Rwy 13-31	HIRL Rwy 17-35
REIL Rwys 17 and 35	FAF to MAP 4.6 NM
Knots	60 90 120 150 180
Min:Sec	4:36 3:04 2:18 1:50 1:32