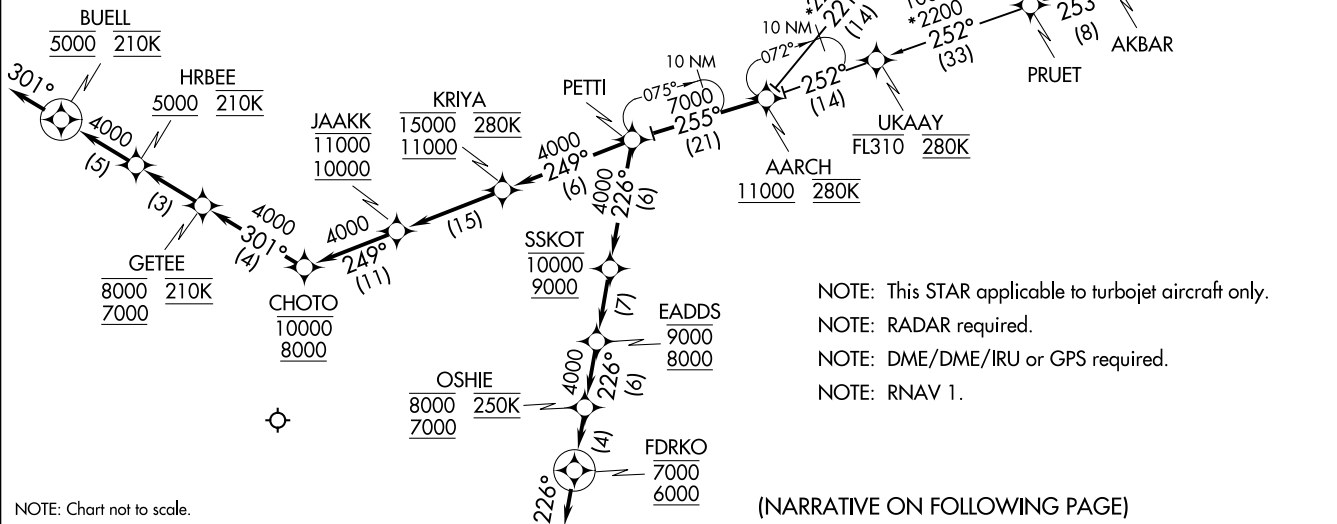


AARCH TWO ARRIVAL (RNAV)
(AARCH,AARCH2) 17AUG17

ST. LOUIS APP CON
132.125 360.6
D-ATIS
125.025 379.925



NOTE: Chart not to scale.

- NOTE: This STAR applicable to turbojet aircraft only.
- NOTE: RADAR required.
- NOTE: DME/DME/IRU or GPS required.
- NOTE: RNAV 1.

(NARRATIVE ON FOLLOWING PAGE)

ST. LOUIS, MISSOURI
ST. LOUIS LAMBERT INTL (STL)

AL-360 (FAA)

ST. LOUIS LAMBERT INTL (STL)
ST. LOUIS, MISSOURI

(AARCH,AARCH2) 172229
AARCH TWO ARRIVAL (RNAV)

ARRIVAL ROUTE DESCRIPTION

AKBAR TRANSITION (AKBAR.AARCH2)

BRICKYARD TRANSITION (VHP.AARCH2)

ROBERTS TRANSITION (RBS.AARCH2)

From AARCH on track 255° to PETTI.

LANDING RUNWAYS 11/12L/R: From PETTI on track 249° to cross KRIYA at or above 11000 and at or below 15000 and at 280K, then on track 249° to cross JAAKK at or above 10000 and at or below 11000, then on track 249° to cross CHOTO at or above 8000 and at or below 10000, then on track 301° to cross GETEE at or above 7000 and at or below 8000 and at 210K, then on track 301° to cross HRBEE at or above 5000 and at 210K, then on track 301° to cross BUELL at 5000 and at 210K. Expect RADAR vectors to final approach course. If not received by BUELL, track via 301°.

LANDING RUNWAYS 29/30L/R: From PETTI on track 226° to cross SSKOT at or above 9000 and at or below 10000, then on track 226° to cross EADDS at or above 8000 and at or below 9000, then on track 226° to cross OSHIE at or above 7000 and at or below 8000, then on track 226° to cross FDRKO at or above 6000 and at or below 7000, then via assigned instrument approach procedure. If approach clearance not received by FDRKO, track via 226°, expect RADAR vectors to final approach course.

NC-3, 14 MAY 2026 to 11 JUN 2026

NC-3, 14 MAY 2026 to 11 JUN 2026