

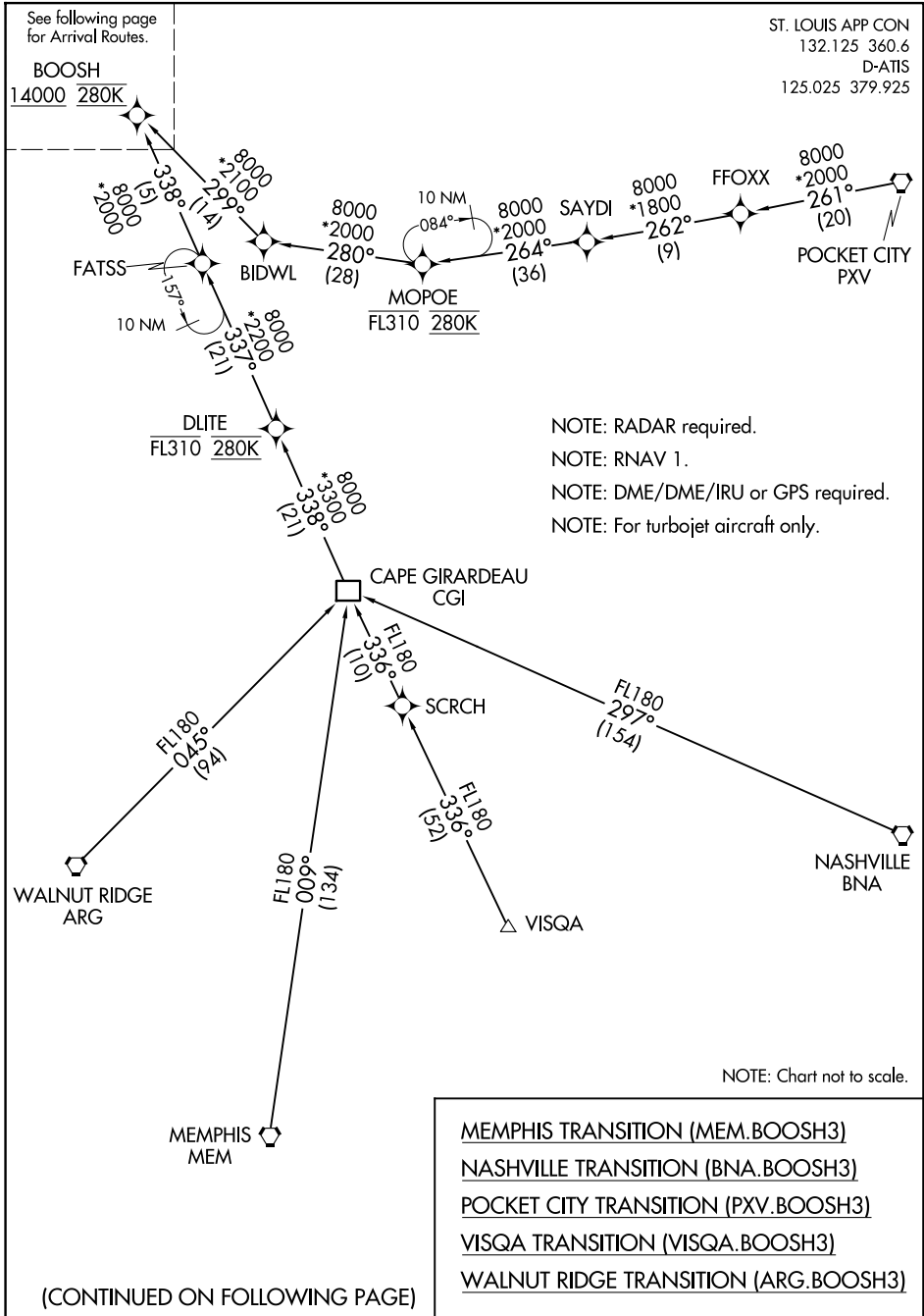
BOOSH THREE ARRIVAL (RNAV) Transition Routes

ST LOUIS LAMBERT INTL (STL)
ST. LOUIS, MISSOURI

See following page
for Arrival Routes.

ST. LOUIS APP CON
132.125 360.6
D-ATIS
125.025 379.925

BOOSH
14000 280K



NOTE: RADAR required.
 NOTE: RNAV 1.
 NOTE: DME/DME/IRU or GPS required.
 NOTE: For turbojet aircraft only.

NOTE: Chart not to scale.

- MEMPHIS TRANSITION (MEM.BOOH3)
- NASHVILLE TRANSITION (BNA.BOOH3)
- POCKET CITY TRANSITION (PXV.BOOH3)
- VISQA TRANSITION (VISQA.BOOH3)
- WALNUT RIDGE TRANSITION (ARG.BOOH3)

(CONTINUED ON FOLLOWING PAGE)

NC-3, 14 MAY 2026 to 11 JUN 2026

NC-3, 14 MAY 2026 to 11 JUN 2026

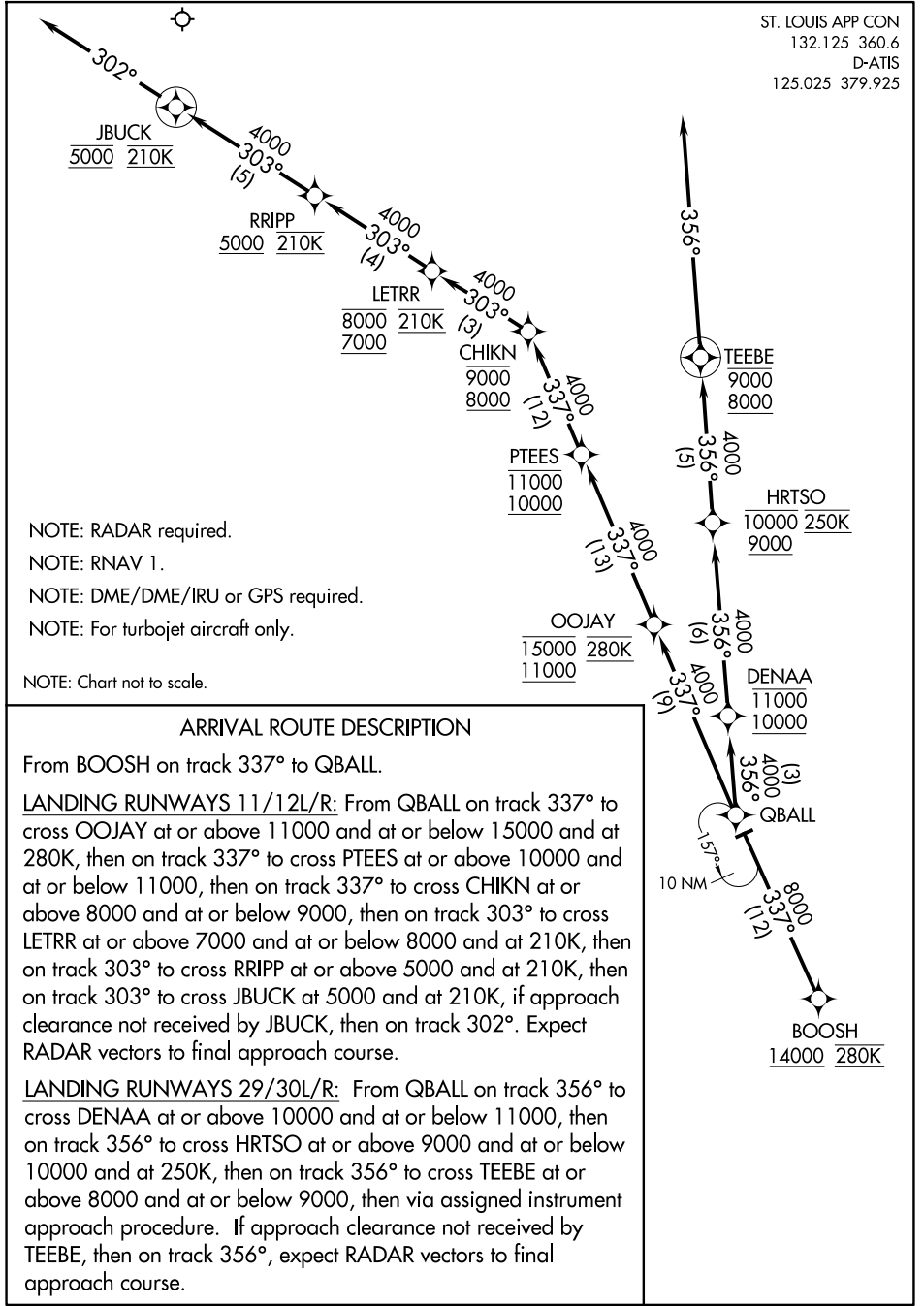
BOOSH THREE ARRIVAL (RNAV) Transition Routes

ST. LOUIS, MISSOURI
ST LOUIS LAMBERT INTL (STL)

BOOSH THREE ARRIVAL (RNAV) Arrival Routes

ST. LOUIS, MISSOURI

ST. LOUIS APP CON
132.125 360.6
D-ATIS
125.025 379.925



- NOTE: RADAR required.
- NOTE: RNAV 1.
- NOTE: DME/DME/IRU or GPS required.
- NOTE: For turbojet aircraft only.
- NOTE: Chart not to scale.

ARRIVAL ROUTE DESCRIPTION

From BOOSH on track 337° to QBALL.

LANDING RUNWAYS 11/12L/R: From QBALL on track 337° to cross OOJAY at or above 11000 and at or below 15000 and at 280K, then on track 337° to cross PTEES at or above 10000 and at or below 11000, then on track 337° to cross CHIKN at or above 8000 and at or below 9000, then on track 303° to cross LETRR at or above 7000 and at or below 8000 and at 210K, then on track 303° to cross RRIPP at or above 5000 and at 210K, then on track 303° to cross JBUCK at 5000 and at 210K, if approach clearance not received by JBUCK, then on track 302°. Expect RADAR vectors to final approach course.

LANDING RUNWAYS 29/30L/R: From QBALL on track 356° to cross DENAA at or above 10000 and at or below 11000, then on track 356° to cross HRTSO at or above 9000 and at or below 10000 and at 250K, then on track 356° to cross TEEBE at or above 8000 and at or below 9000, then via instrument approach procedure. If approach clearance not received by TEEBE, then on track 356°, expect RADAR vectors to final approach course.

BOOSH THREE ARRIVAL (RNAV) Arrival Routes

NC-3, 14 MAY 2026 to 11 JUN 2026

NC-3, 14 MAY 2026 to 11 JUN 2026