

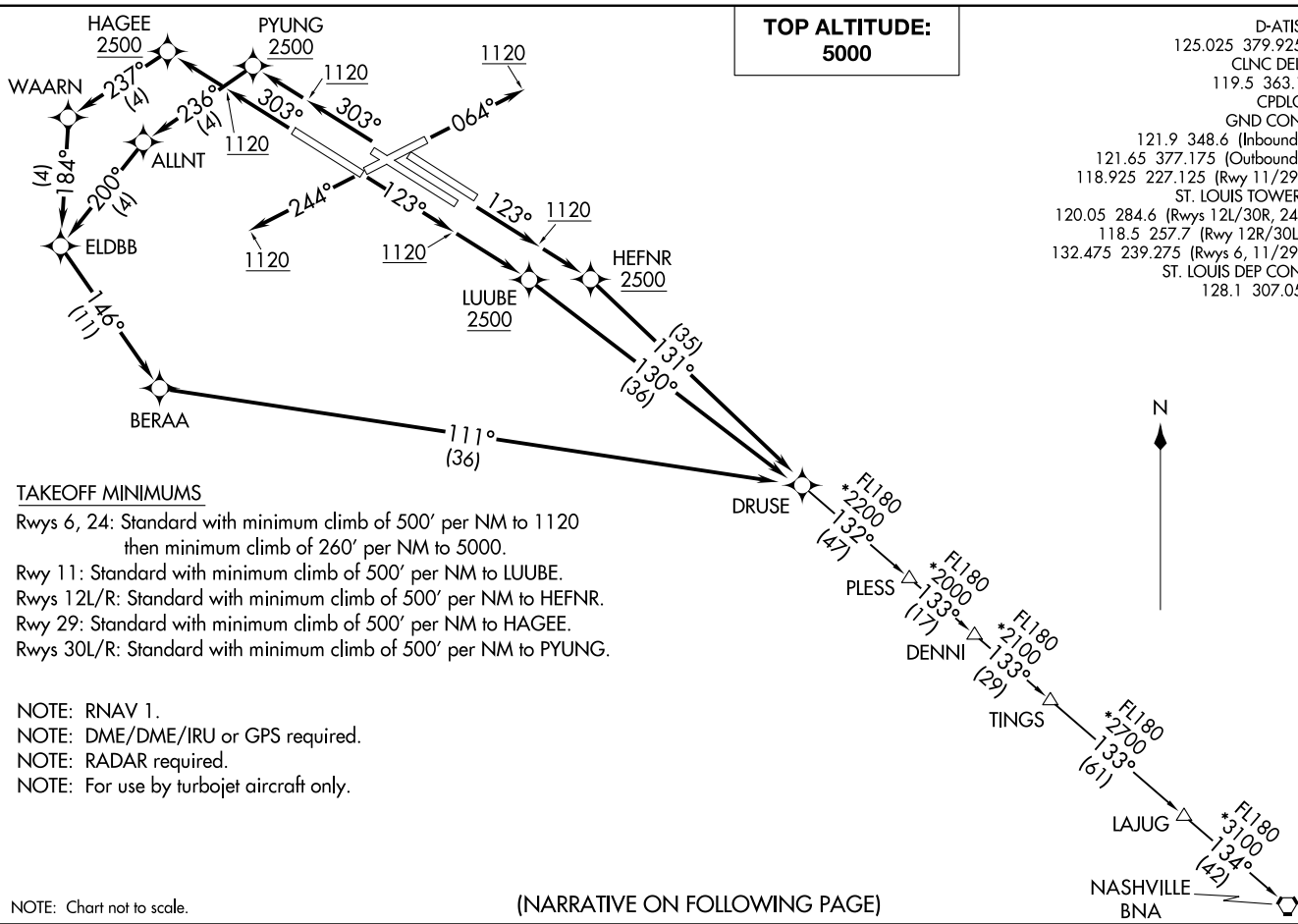
**TOP ALTITUDE:
5000**

D-ATIS
125.025 379.925
CLNC DEL
119.5 363.1
CPDLC
GND CON
121.9 348.6 (Inbound)
121.65 377.175 (Outbound)
118.925 227.125 (Rwy 11/29)
ST. LOUIS TOWER
120.05 284.6 (Rwys 12L/30R, 24)
118.5 257.7 (Rwy 12R/30L)
132.475 239.275 (Rwys 6, 11/29)
ST. LOUIS DEP CON
128.1 307.05

(DRUSE5.DRUSE) 18312
DRUSE FIVE DEPARTURE (RNAV)

AL-360 (FAA)

ST LOUIS LAMBERT INTL (STLL)
ST. LOUIS, MISSOURI



TAKEOFF MINIMUMS

Rwys 6, 24: Standard with minimum climb of 500' per NM to 1120 then minimum climb of 260' per NM to 5000.
 Rwy 11: Standard with minimum climb of 500' per NM to LUUBE.
 Rwys 12L/R: Standard with minimum climb of 500' per NM to HEFNR.
 Rwy 29: Standard with minimum climb of 500' per NM to HAGEE.
 Rwys 30L/R: Standard with minimum climb of 500' per NM to PYUNG.

NOTE: RNAV 1.
 NOTE: DME/DME/IRU or GPS required.
 NOTE: RADAR required.
 NOTE: For use by turbojet aircraft only.

NOTE: Chart not to scale.

(NARRATIVE ON FOLLOWING PAGE)

DRUSE FIVE DEPARTURE (RNAV)
(DRUSE5.DRUSE) 19JUL18

ST. LOUIS, MISSOURI
ST LOUIS LAMBERT INTL (STLL)



DEPARTURE ROUTE DESCRIPTION

TAKEOFF RUNWAY 6: Climb heading 064° to 1120, then as assigned by ATC, expect RADAR vectors to DRUSE. Thence. . . .

TAKEOFF RUNWAY 24: Climb heading 244° to 1120, then as assigned by ATC, expect RADAR vectors to DRUSE. Thence. . . .

TAKEOFF RUNWAY 11: Climb heading 123° to 1120, then direct LUUBE, cross LUUBE at or above 2500, then on depicted route to DRUSE. Thence. . . .

TAKEOFF RUNWAYS 12L/R: Climb heading 123° to 1120, then direct HEFNR, cross HEFNR at or above 2500, then on depicted route to DRUSE. Thence. . . .

TAKEOFF RUNWAY 29: Climb heading 303° to 1120, then direct HAGEE, cross HAGEE at or above 2500, then on depicted route to DRUSE. Thence. . . .

TAKEOFF RUNWAYS 30L/R: Climb heading 303° to 1120, then direct PYUNG, cross PYUNG at or above 2500, then on depicted route to DRUSE. Thence. . . .

. . . . (transition). Maintain 5000, expect filed altitude 10 minutes after departure.

DENNI TRANSITION (DRUSE5.DENNI)

NASHVILLE TRANSITION (DRUSE5.BNA)

NC-3, 14 MAY 2026 to 11 JUN 2026

NC-3, 14 MAY 2026 to 11 JUN 2026