

LOC/DME I-OGZ 111.95 Chan 56(Y)	APP CRS 123°	Rwy Ldg TDZE Apt Elev 9000 618 618
--	------------------------	--

ILS RWY 11 (CAT II & III)

ST LOUIS LAMBERT INTL (STL)

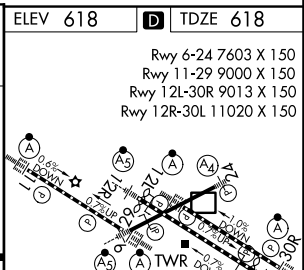
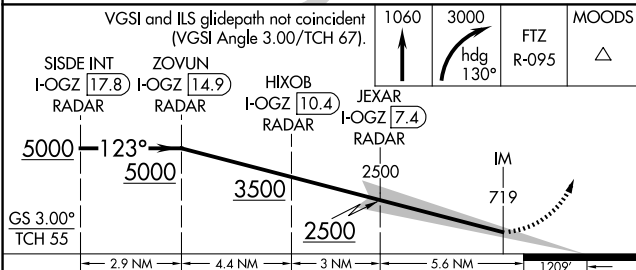
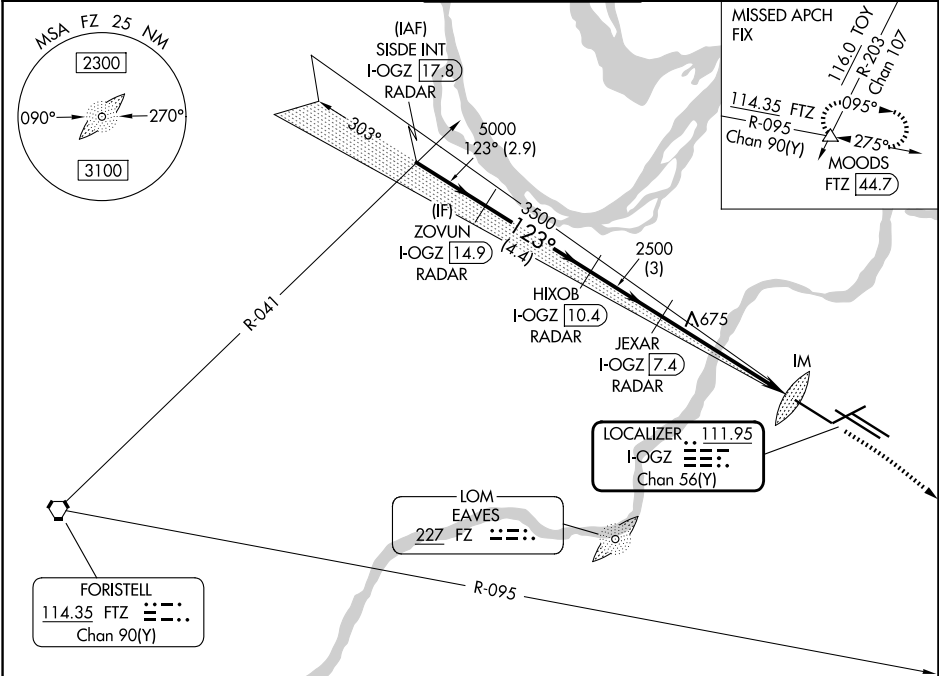
RADAR required for procedure entry. DME or RADAR required.



MISSED APPROACH: Climb to 1060 then climbing right turn to 3000 on heading 130° and FTZ R-095 to MOODS INT/FTZ 44.7 DME and hold.

Simultaneous approach authorized with Rwy 12R/L. Disregard OM signal associated with ILS to Rwy 12R.

D-ATIS 125.025 379.925	ST. LOUIS APP CON 132.125 360.6	ST. LOUIS TOWER 132.475 239.275	GND CON 121.9 348.6 (Inbound) 121.65 377.175 (Outbound) 118.925 227.125 (11/29)
----------------------------------	---	---	---



CATEGORY	A	B	C	D
S-ILS 11	CAT II RA 187/12 100 DA 718			
S-ILS 11	CAT III RVR 06			

CATEGORY II & III ILS - SPECIAL AIRCREW & AIRCRAFT CERTIFICATION REQUIRED

HIRL all rwy's
TDZL/RCLS Rwy's 11, 12L, 12R, 29, and 30R

NC-3, 14 MAY 2026 to 11 JUN 2026

NC-3, 14 MAY 2026 to 11 JUN 2026