

LOC/DME I-OGZ <b>111.95</b> Chan 56(Y)	APP CRS <b>123°</b>	Rwy Ldg TDZE Apt Elev	<b>9000</b> <b>618</b> <b>618</b>
--	------------------------	-----------------------------	---

# ILS or LOC RWY 11

ST LOUIS LAMBERT INTL (STL)

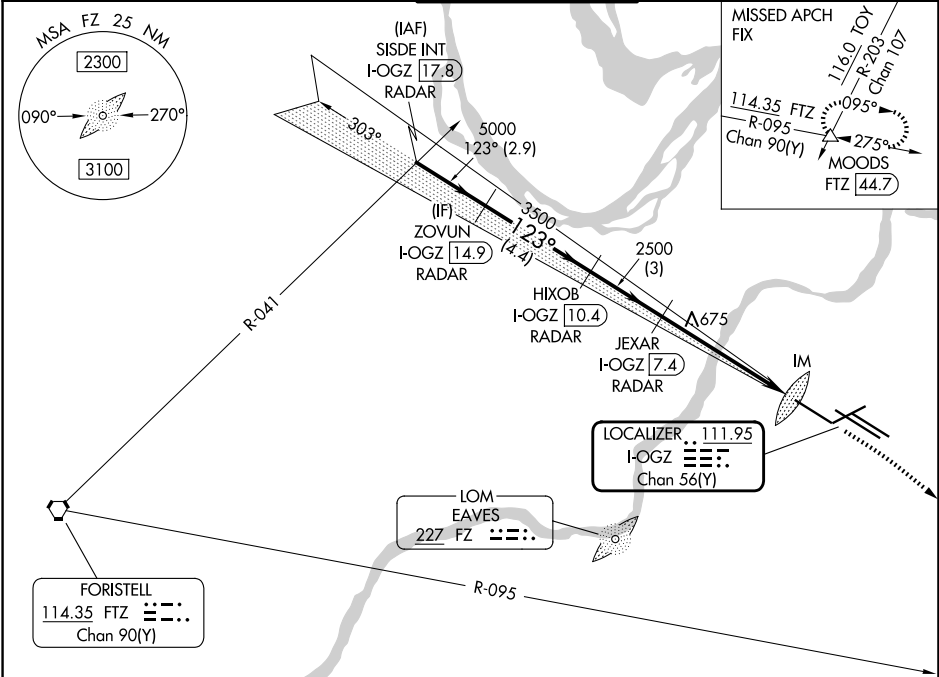
**RADAR required for procedure entry. DME or RADAR required.**

Simultaneous approach authorized with Rwy 12R/L. Disregard OM signal associated with ILS to Rwy 12R. For inop ALS, increase S-ILS Cat E visibility to RVR 4000, and S-LOC Cat C/D/E visibility to RVR 5500.



MISSED APPROACH: Climb to 1060 then climbing right turn to 3000 on heading 130° and FTZ R-095 to MOODS INT/FTZ 44.7 DME and hold.

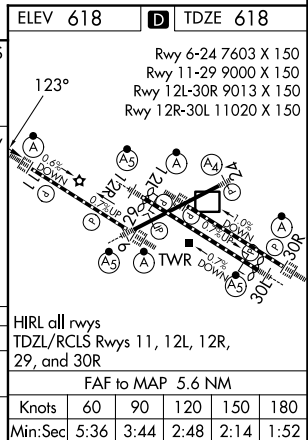
D-ATIS <b>125.025 379.925</b>	ST. LOUIS APP CON <b>132.125 360.6</b>	ST. LOUIS TOWER <b>132.475 239.275</b>	GND CON <b>121.9 348.6</b> (Inbound) <b>121.65 377.175</b> (Outbound) <b>118.925 227.125</b> (11/29)
----------------------------------	---	---	---



NC-3, 14 MAY 2026 to 11 JUN 2026

NC-3, 14 MAY 2026 to 11 JUN 2026

VGSi and ILS glidepath not coincident (VGSi Angle 3.00/TCH 67).		1060	3000	FTZ R-095	MOODS
		↑	hdg 130°		△
SISDE INT I-OGZ 17.8	ZOVUN I-OGZ 14.9	HIXOB I-OGZ 10.4	JEXAR I-OGZ 7.4	*LOC only	
5000		5000	3500	2500	2500
GS 3.00° TCH 55				*I-OGZ 2.7	I-OGZ 1.8
→ 2.9 NM		→ 4.4 NM	→ 3 NM	→ 4.6 NM	→ 0.9 NM
CATEGORY	A	B	C	D	E
S-ILS 11	818/18 200 (200-½)				
S-LOC 11	980/24	362 (400-½)	980/35		362 (400-¾)



FAF to MAP 5.6 NM					
Knots	60	90	120	150	180
Min:Sec	5:36	3:44	2:48	2:14	1:52