

LOC/DME I-LMR <b>109.7</b> Chan <b>34</b>	APP CRS <b>123°</b>	Rwy Ldg <b>12R 10553</b> <b>12L 8956</b>	TDZE <b>540 541</b>	Apt Elev <b>617 617</b>
---	------------------------	--	------------------------	----------------------------

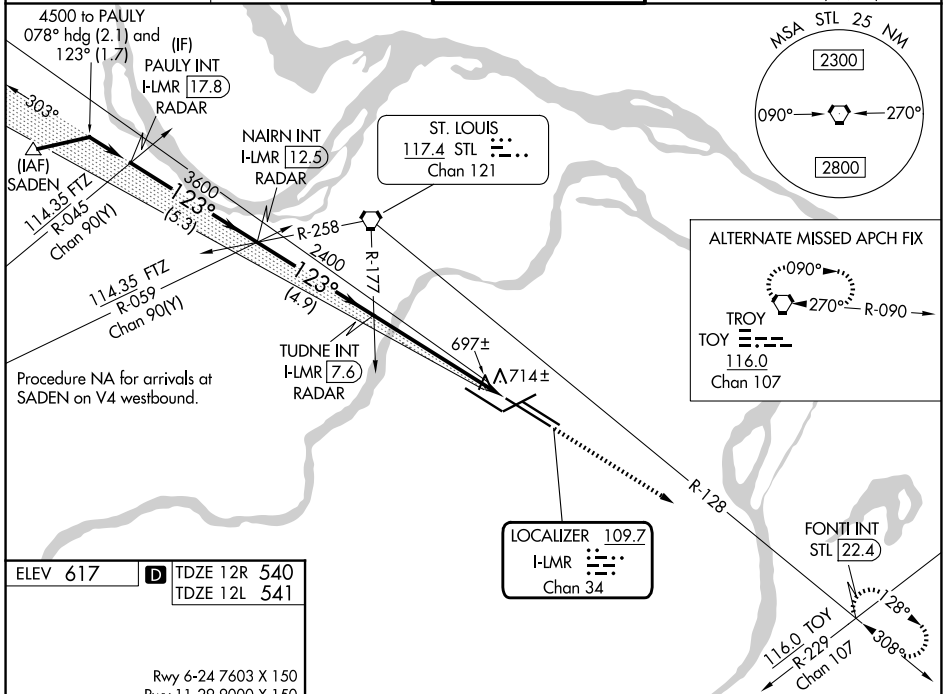
# ILS or LOC RWY 12R

ST LOUIS LAMBERT INTL (STL)

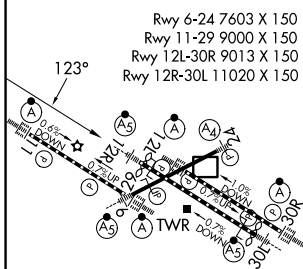
▼ LOC only: Rwy 12R helicopter visibility reduction below RVR 4000 NA. Inop table does not apply to sidestep Rwy 12L. For inop ALS, increase S-ILS 12R Cat E visibility to RVR 4000 and increase S-LOC 12R Cats A/B visibility to RVR 5500, Cats C/D/E visibility to RVR 6000. Simultaneous approach authorized with Rwy 11. Simultaneous approach authorized with Rwy 12L requires use of vertical guidance, maintain last assigned altitude until established on glideslope.

MALSR Rwy 12R 	ALS-F2 Rwy 12L 	MISSED APPROACH: Climb to 5000 on STL VORTAC R-128 to FONTI INT/STL 22.4 DME and hold, continue climb-in-hold to 5000.
-------------------	--------------------	--

D-ATIS <b>125.025 379.925</b>	ST. LOUIS APP CON <b>132.125 360.6</b>	ST. LOUIS TOWER <b>118.5 257.7</b>	GND CON <b>121.9 348.6</b> (Inbound) <b>121.65 377.175</b> (Outbound) <b>118.925 227.125</b> (11/29)
----------------------------------	---	---------------------------------------	---

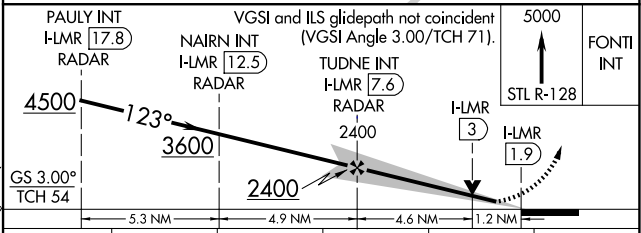


ELEV 617	<b>D</b> TDZE 12R 540 TDZE 12L 541
----------	---------------------------------------



HIRL all rwys  
TDZL/RCLS Rws 11, 12L, 12R, 29, and 30R  
FAF to MAP 5.7 NM

Knots	60	90	120	150	180
Min:Sec	5:42	3:48	2:51	2:17	1:54



CATEGORY	A	B	C	D	E
S-ILS 12R	740/18 200 (200-½)				
S-LOC 12R	960/40 420 (400-¾)				
SIDESTEP 12L	980-1 439 (400-1)	980-1½ 439 (400-1½)	980-2 439 (400-2)		

NC-3, 14 MAY 2026 to 11 JUN 2026

NC-3, 14 MAY 2026 to 11 JUN 2026