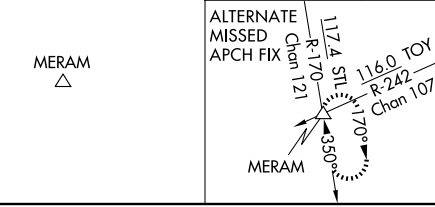
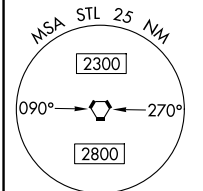
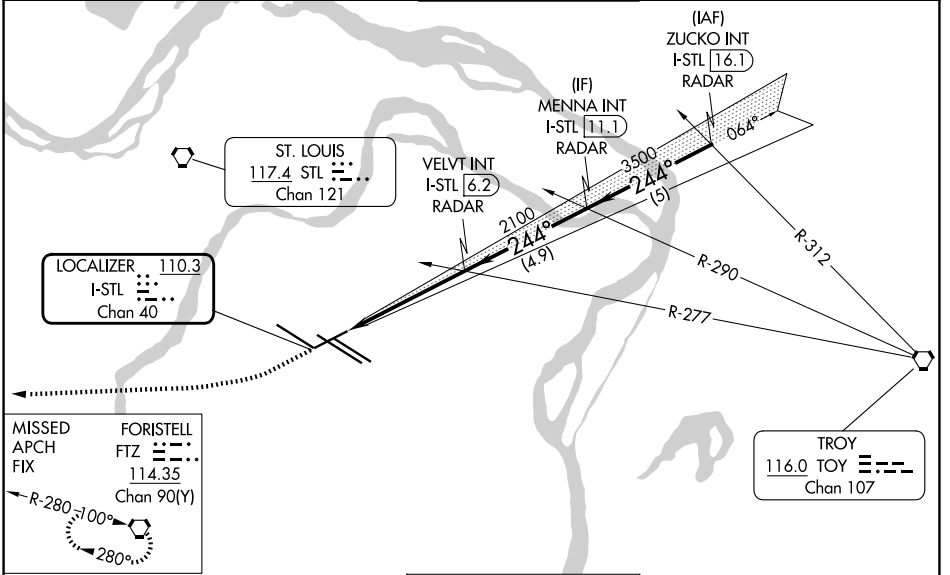


LOC/DME I-STL 110.3 Chan 40	APP CRS 244°	Rwy Ldg TDZE 7603 534 Apt Elev 618
--	------------------------	---

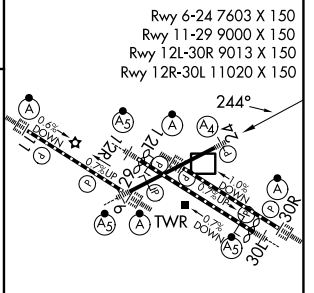
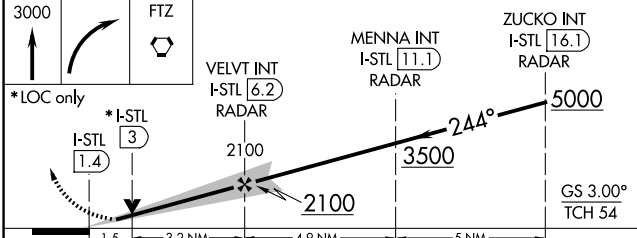
ILS or LOC RWY 24

ST LOUIS LAMBERT INTL (STL)

RADAR required for procedure entry.			MALS 	MISSED APPROACH: Climb to 3000 then right turn direct FTZ VORTAC and hold.
<p>▼ Inop table does not apply to S-ILS 24. For inop ALS, increase S-LOC 24 Cat E visibility to 1$\frac{1}{2}$ SM.</p>				
D-ATIS 125.025 379.925	ST. LOUIS APP CON 132.125 360.6	ST. LOUIS TOWER 120.05 284.6	GND CON 121.9 348.6 (Inbound) 121.65 377.175 (Outbound) 118.925 227.125 (11/29)	



ELEV 618	D TDZE 534
----------	-------------------



CATEGORY	A	B	C	D	E
S-ILS 24	734/40 200 (200- $\frac{3}{4}$)				
S-LOC 24	1080/40	546 (500- $\frac{3}{4}$)	1080-1 $\frac{3}{8}$	546 (500-1 $\frac{1}{8}$)	

HIRL all rwys
TDZL/RCLS Rws 11, 12L, 12R, 29, and 30R

FAF to MAP 4.8 NM

Knots	60	90	120	150	180
Min:Sec	4:48	3:12	2:24	1:55	1:36

NC-3, 14 MAY 2026 to 11 JUN 2026

NC-3, 14 MAY 2026 to 11 JUN 2026