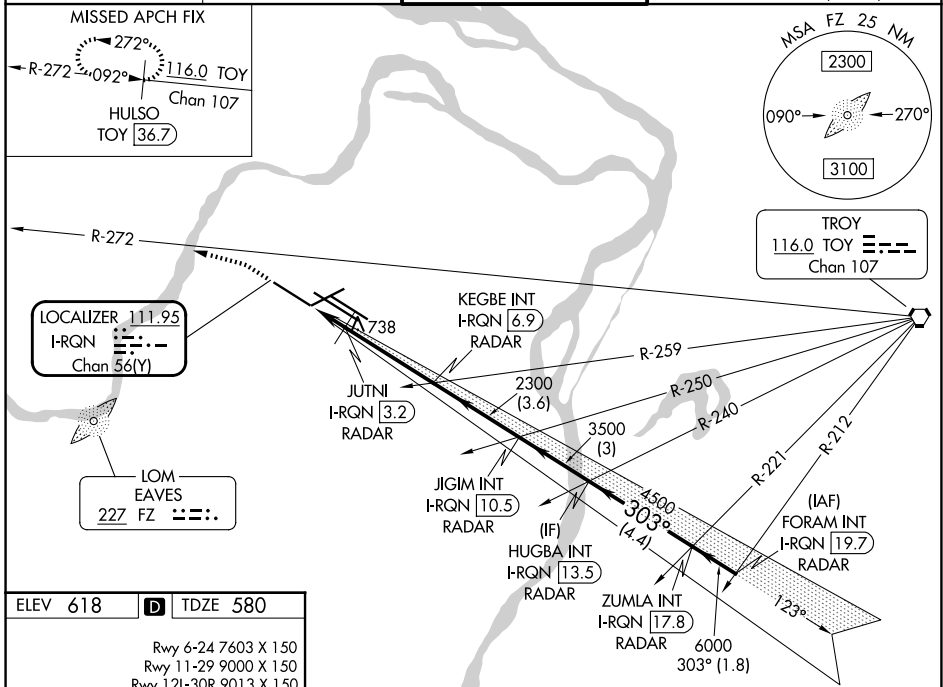


LOC/DME I-RQN <b>111.95</b> Chan <b>56(Y)</b>	APP CRS <b>303°</b>	Rwy Ldg TDZE <b>580</b> Apt Elev <b>618</b>
---	------------------------	---

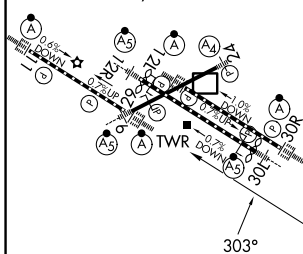
# ILS or LOC RWY 29

ST LOUIS LAMBERT INTL (STL)

RADAR required for procedure entry. DME or RADAR required.		ALSIF-2 	MISSED APPROACH: Climb to 1040 then climbing left turn to 3000 on heading 286° and on TOY VORTAC R-272 to HULSO/TOY 36.7 DME and hold.
D-ATIS <b>125.025 379.925</b>	ST. LOUIS APP CON <b>132.125 360.6</b>		ST. LOUIS TOWER <b>132.475 239.275</b>



ELEV 618	<b>D</b>	TDZE 580
Rwy 6-24 7603 X 150 Rwy 11-29 9000 X 150 Rwy 12L-30R 9013 X 150 Rwy 12R-30L 11020 X 150		



1040	3000	TOY R-272	HULSO TOY 36.7	VGSI and ILS glidepath not coincident (VGSI Angle 3.00/ TCH 73).				
Disregard OM indications. * LOC only		JUTNI I-RQN 3.2 RADAR	KEGBE INT I-RQN 6.9 RADAR	JIGIM INT I-RQN 10.5 RADAR	HUGBA INT I-RQN 13.5 RADAR	ZUMLA INT I-RQN 17.8 RADAR	FORAM INT I-RQN 19.7 RADAR	303°-6000
1100*		2300	3500	4500	6000	GS 3.00° TCH 56		
1.5 NM		3.7 NM	3.6 NM	3 NM	4.4 NM	1.8 NM		
CATEGORY	A	B	C	D	E			
S-ILS 29			780/18	200 (200-½)				
S-LOC 29			980/40	400 (400-¾)				

NC-3, 14 MAY 2026 to 11 JUN 2026

NC-3, 14 MAY 2026 to 11 JUN 2026