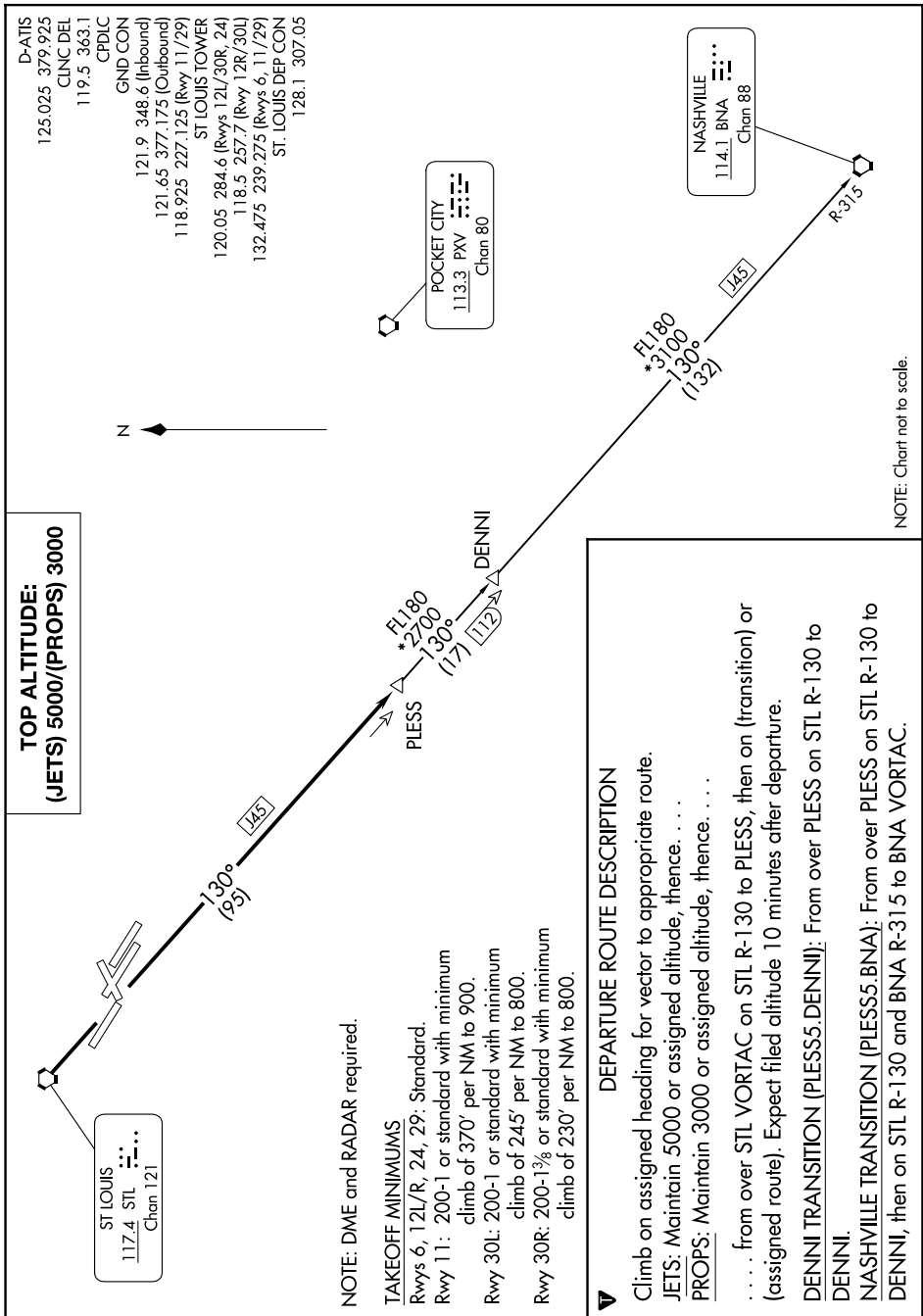


PLESS FIVE DEPARTURE

AL-360 (FAA)

ST LOUIS LAMBERT INTL (STL)
ST. LOUIS, MISSOURI

NC-3, 14 MAY 2026 to 11 JUN 2026



**TOP ALTITUDE:
(JETS) 5000/(PROPS) 3000**

ST LOUIS
117.4 STL
Chan 121

POCKET CITY
113.3 PKV
Chan 80

NASHVILLE
114.1 BNA
Chan 88

NOTE: DME and RADAR required.

TAKEOFF MINIMUMS

- Rwys 6, 12L/R, 24, 29: Standard.
- Rwy 11: 200-1 or standard with minimum climb of 370' per NM to 900.
- Rwy 30L: 200-1 or standard with minimum climb of 245' per NM to 800.
- Rwy 30R: 200-1½ or standard with minimum climb of 230' per NM to 800.

DEPARTURE ROUTE DESCRIPTION

Climb on assigned heading for vector to appropriate route.
JETS: Maintain 5000 or assigned altitude, thence. . . .
PROPS: Maintain 3000 or assigned altitude, thence. . . .
 . . . from over STL VORTAC on STL R-130 to PLESS, then on (transition) or (assigned route). Expect filed altitude 10 minutes after departure.
DENN1 TRANSITION (PLESS5.DENN1): From over PLESS on STL R-130 to DENN1.
NASHVILLE TRANSITION (PLESS5.BNA): From over PLESS on STL R-130 to DENN1, then on STL R-130 and BNA R-315 to BNA VORTAC.

NOTE: Chart not to scale.

NC-3, 14 MAY 2026 to 11 JUN 2026

PLESS FIVE DEPARTURE