

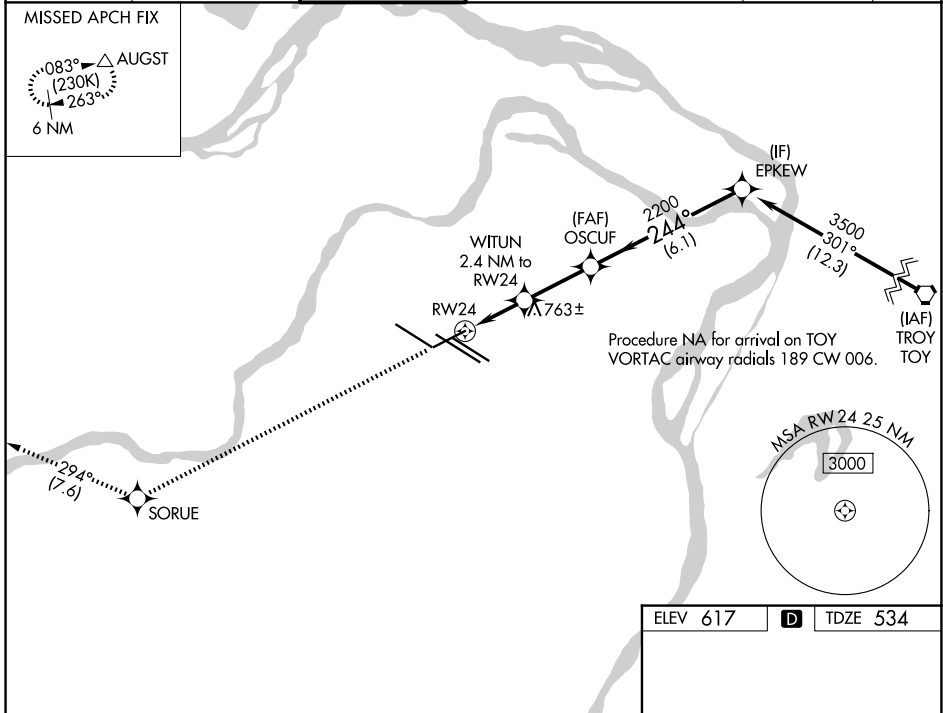
WAAS CH 87021 W24A	APP CRS 244°	Rwy Ldg TDZE Apt Elev	7603 534 617
--	------------------------	-----------------------------	---

RNAV (GPS) RWY 24

ST LOUIS LAMBERT INTL (STL)

RNP APCH - GPS.		MALS	MISSED APPROACH: Climb to 3000 direct SORUE and on track 294° to AUGST and hold.
▼ For uncompensated Baro-VNAV systems, LNAV/VNAV NA below -16°C or above 54°C. Inop table does not apply to LPV. For inop ALS, increase LNAV/VNAV Cat E visibility to 1 3/8 SM and LNAV Cat E visibility to 1 3/8 SM.			

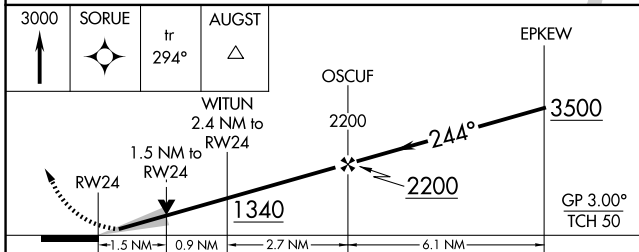
D-ATIS 125.025 379.925	ST. LOUIS APP CON 132.125 360.6	ST. LOUIS TOWER 120.05 284.6	GND CON 121.9 348.6 (Inbound) 121.65 377.175 (Outbound) 118.925 227.125 (Rwy 11/29)	CLNC DEL 119.5 363.1	CPDLC
--	---	--	---	--------------------------------	-------



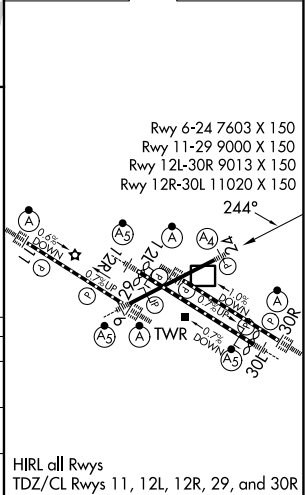
NC-3, 14 MAY 2026 to 11 JUN 2026

NC-3, 14 MAY 2026 to 11 JUN 2026

ELEV 617	D	TDZE 534
----------	----------	----------



CATEGORY	A	B	C	D	E
LPV DA	734/40 200 (200-3/4)				
LNAV/VNAV DA	1015/60 481 (400-1 1/4)				
LNAV MDA	1080/40	546 (500-3/4)	1080-1 3/8		546 (500-1 3/8)



HIRL all Rwys
TDZ/CL Rwys 11, 12L, 12R, 29, and 30R