

APP CRS	Rwy Ldg	9000
123°	TDZE	617
	Apt Elev	617

RNAV (RNP) Z RWY 11

ST LOUIS LAMBERT INTL (STL)

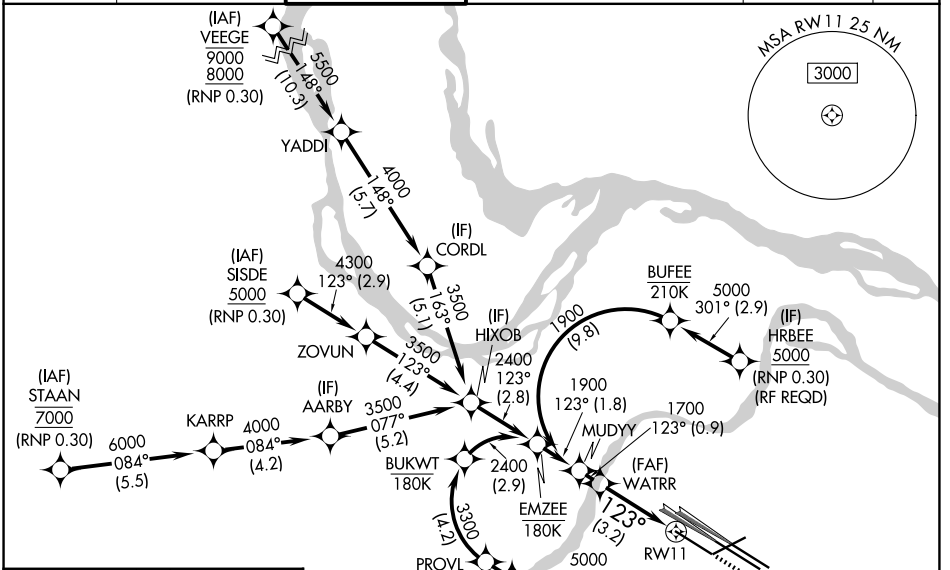
RNP AR APCH - GPS, min RNP 0.30. Authorization required from HRBEE or RRIPP: RF.
 RADAR required for procedure entry.

ALSF-2

MISSED APPROACH: Climb to 1100 then climbing right turn to 3000 direct IMPER and hold.

Simultaneous approach authorized with Rwsy 12L/R, except for arrivals at RRIPP and HRBEE. Use of FD or AP providing RNAV track guidance required during simultaneous operations. For uncompensated Baro-VNAV systems, procedure NA below -16°C or above 54°C. For inop ALS, increase RNP 0.30 all Cats visibility to RVR 4500.

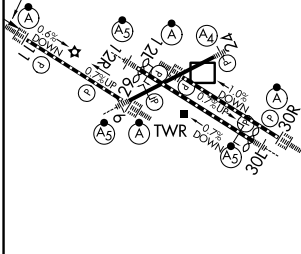
D-ATIS	ST. LOUIS APP CON	ST. LOUIS TOWER	GND CON	CLNC DEL	CPDLC
125,025 379,925	132.125 360.6	132.475 239.275	121.9 348.6 (Inbound) 121.65 377.175 (Outbound) 118.925 227.125 (Rwy 11/29)	119.5 363.1	



NC-3, 14 MAY 2026 to 11 JUN 2026

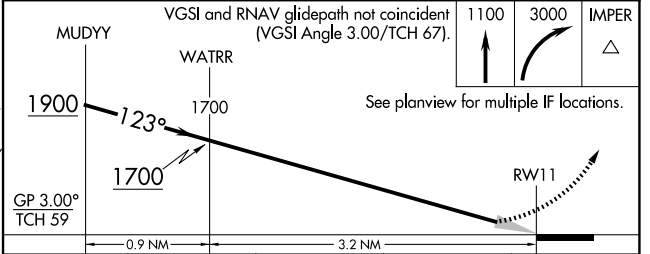
NC-3, 14 MAY 2026 to 11 JUN 2026

ELEV 617	D	TDZE 617
Rwy 6-24 7603 X 150 Rwy 11-29 9000 X 150 Rwy 12L-30R 9013 X 150 Rwy 12R-30L 11020 X 150		



MISSED APCH FIX

Diagram showing the MISSED APCH FIX. It includes the IMPER symbol and a 4 NM distance to RWY 11. A 3000 ft MSL is indicated.



CATEGORY	A	B	C	D
RNP 0.30 DA	925/24 308 (400-1/2)			

HIRL all Rwsy
 TDZ/CL Rwsy 11, 12L, 12R, 29, and 30R

AUTHORIZATION REQUIRED