

APP CRS	Rwy Ldg	<b>8956</b>
<b>123°</b>	TDZE	<b>541</b>
	Apt Elev	<b>617</b>

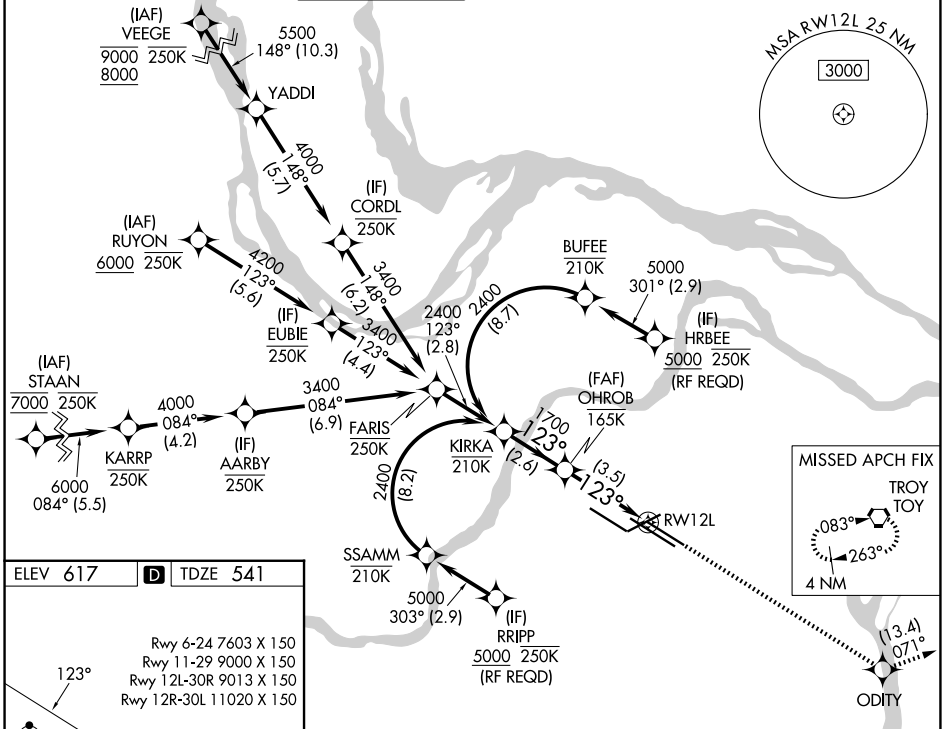
# RNAV (RNP) Z RWY 12L

ST LOUIS LAMBERT INTL (STL)

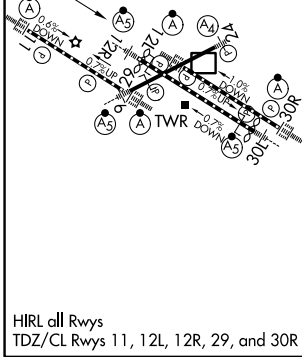
RNP AR APCH - GPS. Authorization required from HRBEE or RRIPP: RF.  
 RADAR required for procedure entry  
 Use of FD or AP required during simultaneous operations. Simultaneous approach authorized with Rwy 11, except for arrivals at RRIPP and HRBEE. For uncompensated Baro-VNAV systems, procedure NA below -16°C or above 54°C. For inop ALS, increase RNP 0.30 all Cats visibility to 1 1/8 SM.

ALSF-2  
 MISSED APPROACH: Climb to 3000 direct ODITY and track 071° to TOY VORTAC and hold.

D-ATIS	ST. LOUIS APP CON	ST. LOUIS TOWER	GND CON	CLNC DEL	CPDLC
<b>125.025</b>	<b>132.125 360.6</b>	<b>120.05 284.6</b>	<b>121.9 348.6</b> (Inbound)	<b>119.5 363.1</b>	
<b>379.925</b>			<b>121.65 377.175</b> (Outbound)		
			<b>118.925 227.125</b> (Rwy 11/29)		



ELEV 617	<b>D</b>	TDZE 541
Rwy 6-24 7603 X 150 Rwy 11-29 9000 X 150 Rwy 12L-30R 9013 X 150 Rwy 12R-30L 11020 X 150		



VGSi and RNAV glidepath not coincident (VGSi Angle 3.00/TCH 60).			
KIRKA	OHROB	3000	ODITY
2400	1700	↑	tr 071°
See planview for multiple IF locations.			
GP 3.00°	RWY 12L		
TCH 54	2.6 NM	3.5 NM	
CATEGORY	A	B	C
RNP 0.30 DA	1055/55 514 (500-1)		
<b>AUTHORIZATION REQUIRED</b>			

NC-3, 14 MAY 2026 to 11 JUN 2026

NC-3, 14 MAY 2026 to 11 JUN 2026