

APP CRS	Rwy Ldg	<b>9000</b>
<b>303°</b>	TDZE	<b>580</b>
	Apt Elev	<b>618</b>

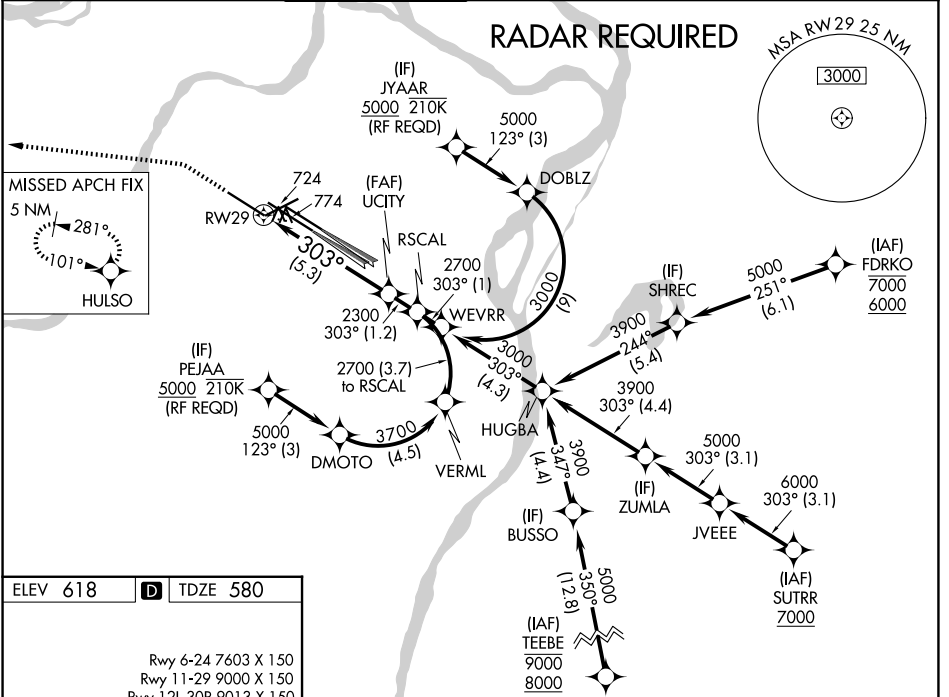
# RNAV (RNP) Z RWY 29

ST LOUIS LAMBERT INTL (STL)

▼ For uncompensated Baro-VNAV systems, procedure NA below -16°C (4°F) or above 54°C (130°F). Simultaneous approach authorized with Rwy 30L/R. Use of FD or AP providing RNAV track guidance required during simultaneous operations. GPS required. For inop ALS, increase RNP 0.12 all Cats visibility to RVR 6000, increase RNP 0.17 all Cats visibility to 1½, and increase RNP 0.30 all Cats visibility to 1¼.

ALSF-2  
 MISSED APPROACH: Climb to 1100 then climbing left turn to 3000 direct HULSO and hold.

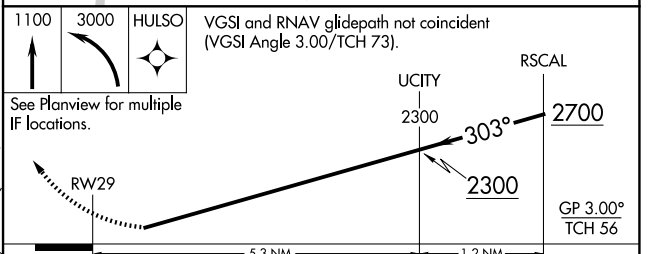
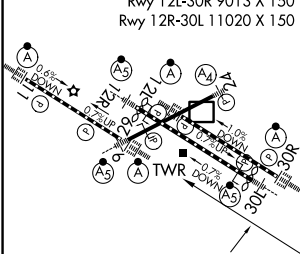
D-ATIS <b>125.025</b> <b>379.925</b>	ST. LOUIS APP CON <b>132.125 360.6</b>	ST. LOUIS TOWER <b>132.475 239.275</b>	GND CON <b>121.9 348.6</b> (Inbound) <b>121.65 377.175</b> (Outbound) <b>118.925 227.125</b> (Rwy 11/29)	CLNC DEL <b>119.5 363.1</b>	CPDLC
--	---	---	---	--------------------------------	-------



NC-3, 14 MAY 2026 to 11 JUN 2026

NC-3, 14 MAY 2026 to 11 JUN 2026

ELEV 618	<b>D</b>	TDZE 580
Rwy 6-24 7603 X 150		
Rwy 11-29 9000 X 150		
Rwy 12L-30R 9013 X 150		
Rwy 12R-30L 11020 X 150		



CATEGORY	A	B	C	D
RNP 0.12 DA		963/50	383 (400-1)	
RNP 0.17 DA		1035/50	455 (500-1)	
RNP 0.30 DA		1088/60	508 (500-1¼)	

HIRL all Rwys  
 TDZ/CL Rwys 11, 12L, 12R, 29, and 30R

## AUTHORIZATION REQUIRED