

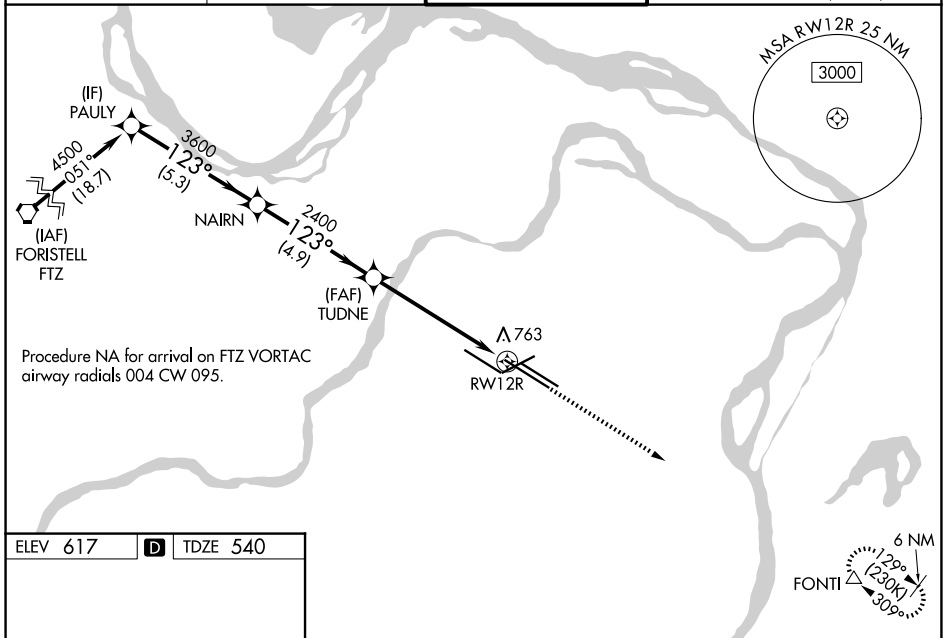
WAAS CH 78121 W12B	APP CRS 123°	Rwy Ldg 10552 TDZE 540 Apt Elev 617
----------------------------------------	------------------------	----------------------------------------------------------------

RNAV (GPS) Y RWY 12R

ST LOUIS LAMBERT INTL (STL)

RNP APCH - GPS.		MALSR 	MISSED APPROACH: Climb to 5000 direct FONTI and hold, continue climb-in-hold to 5000.
▽ Rwy 12R helicopter visibility reduction below RVR 4000 NA. For uncompensated Baro-VNAV systems, LNAV/VNAV NA below -16°C or above 54°C. Simultaneous approach authorized with Rwy 11. LNAV procedure NA during simultaneous operations. Use of FD or AP required during simultaneous operations. For inop ALS, increase LPV Cat E visibility to RVR 4000, LNAV/VNAV all Cats visibility to 1½ SM, LNAV Cats A/B visibility to RVR 5500, and LNAV Cat C/D/E visibility to 1¾ SM.			

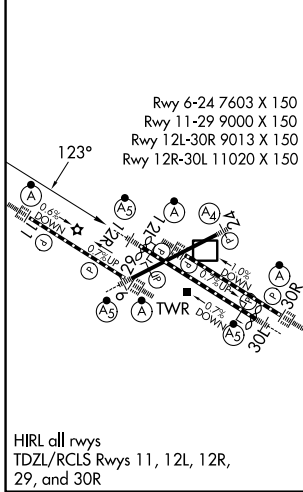
D-ATIS 125.025 379.925	ST. LOUIS APP CON 132.125 360.6	ST. LOUIS TOWER 118.5 257.7	GND CON 121.9 348.6 (Inbound) 121.65 377.175 (Outbound) 118.925 227.125 (11/29)
----------------------------------	-------------------------------------------	---------------------------------------	---------------------------------------------------------------------------------------------------------------



NC-3, 14 MAY 2026 to 11 JUN 2026

NC-3, 14 MAY 2026 to 11 JUN 2026

ELEV 617	D	TDZE 540
----------	----------	----------



	PAULY	NAI RN	TUDNE	FONTI	
	4500	3600	2400	1200	5000
	VGSI and RNAV glidepath not coincident (VGSI Angle 3.00/TCH 71).				
	GP 3.00° TCH 54				
	1.3 NM to RWY 12R				
	-5.3 NM -4.9 NM -4.4 NM -1.3				
CATEGORY	A	B	C	D	E
LPV	DA	740/18		200 (200-½)	
LNAV/VNAV	DA	1103-1¼		563 (500-1¼)	
LNAV MDA	1020/40	480 (500-¾)	1020/50		480 (500-1)