

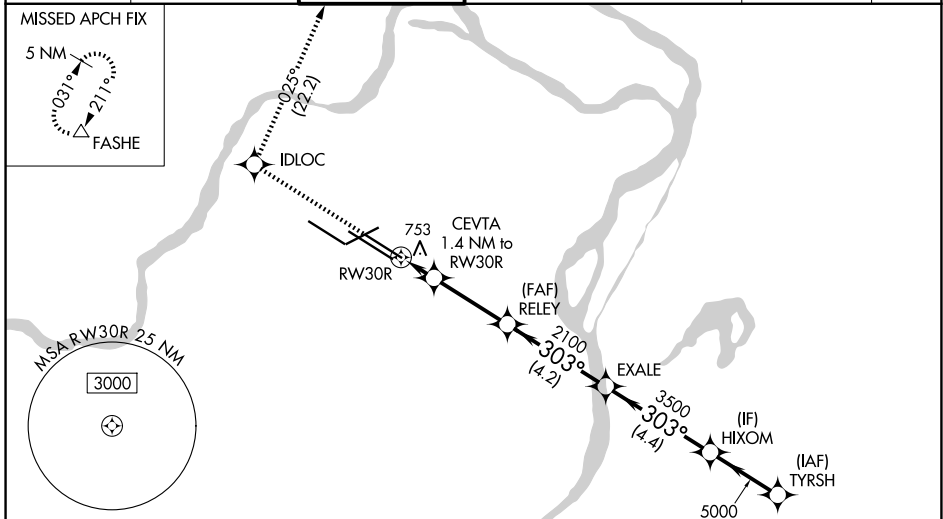
| | | | |
|--|------------------------|-----------------------------|---|
| WAAS CH 73000 W30A | APP CRS 303° | Rwy Ldg TDZE Apt Elev | 9013 605 617 |
|--|------------------------|-----------------------------|---|

RNAV (GPS) Y RWY 30R

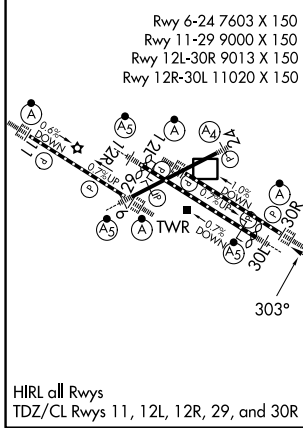
ST LOUIS LAMBERT INTL (STL)

| | | | |
|--|--|------------|--|
| RNP APCH - GPS. | | ALSF-2 | MISSED APPROACH: Climb to 3000 direct IDLOC and on track 025° to FASHE and hold. |
| RADAR required for procedure entry. | | | |
| <p>▼ For uncompensated Baro-VNAV systems, LNAV/VNAV NA below -15°C or above 54°C. LNAV procedure NA during simultaneous operations. Use of FD or AP required during simultaneous operations. Simultaneous approach authorized with Rwy 29. For inop ALS, increase LPV Cat E visibility to RVR 4000, LNAV/VNAV all Cats visibility to RVR 4500, LNAV Cat C/D/E visibility to RVR 6000.</p> | | | |

| | | | | | |
|--|---|--|---|--------------------------------|-------|
| D-ATIS 125.025 379.925 | ST. LOUIS APP CON 132.125 360.6 | ST. LOUIS TOWER 120.05 284.6 | GND CON 121.9 348.6 (Inbound) 121.65 377.175 (Outbound) 118.925 227.125 (Rwy 11/29) | CLNC DEL 119.5 363.1 | CPDLC |
|--|---|--|---|--------------------------------|-------|



| | | |
|----------|----------|----------|
| ELEV 617 | D | TDZE 605 |
|----------|----------|----------|



| | | | | | |
|--------------|--------------------------|---------------|---------------|-------------|---|
| 3000 | IDLOC | FASHE | HIXOM | TYRSH | |
| ↑ | ◆ | tr 025° | △ | | |
| | CEVTA 1.4 NM to RW30R | RELEY 2100 | EXALE 3500 | 5000 | |
| | 1100 | 2100 | 303° | 5000 | |
| | 1.4 | 3.1 NM | 4.2 NM | 4.4 NM | |
| | 2.9 NM | | | | |
| | GP 3.00° TCH 57 | | | | |
| CATEGORY | A | B | C | D | E |
| LPV DA | | 805/18 | 200 (200-½) | | |
| LNAV/VNAV DA | | 914/24 | 309 (300-½) | | |
| LNAV MDA | 1020/24 | 415 (500-½) | 1020/40 | 415 (500-¾) | |

NC-3, 14 MAY 2026 to 11 JUN 2026

NC-3, 14 MAY 2026 to 11 JUN 2026