

TEDDD FIVE DEPARTURE (RNAV)  
(TEDD5, TEDDD) 190U18

**TOP ALTITUDE:  
5000**

**TAKEOFF MINIMUMS**

Rwys 6, 24: Standard with minimum climb of 500' per NM to 1120 then minimum climb of 280' per NM to 5000.

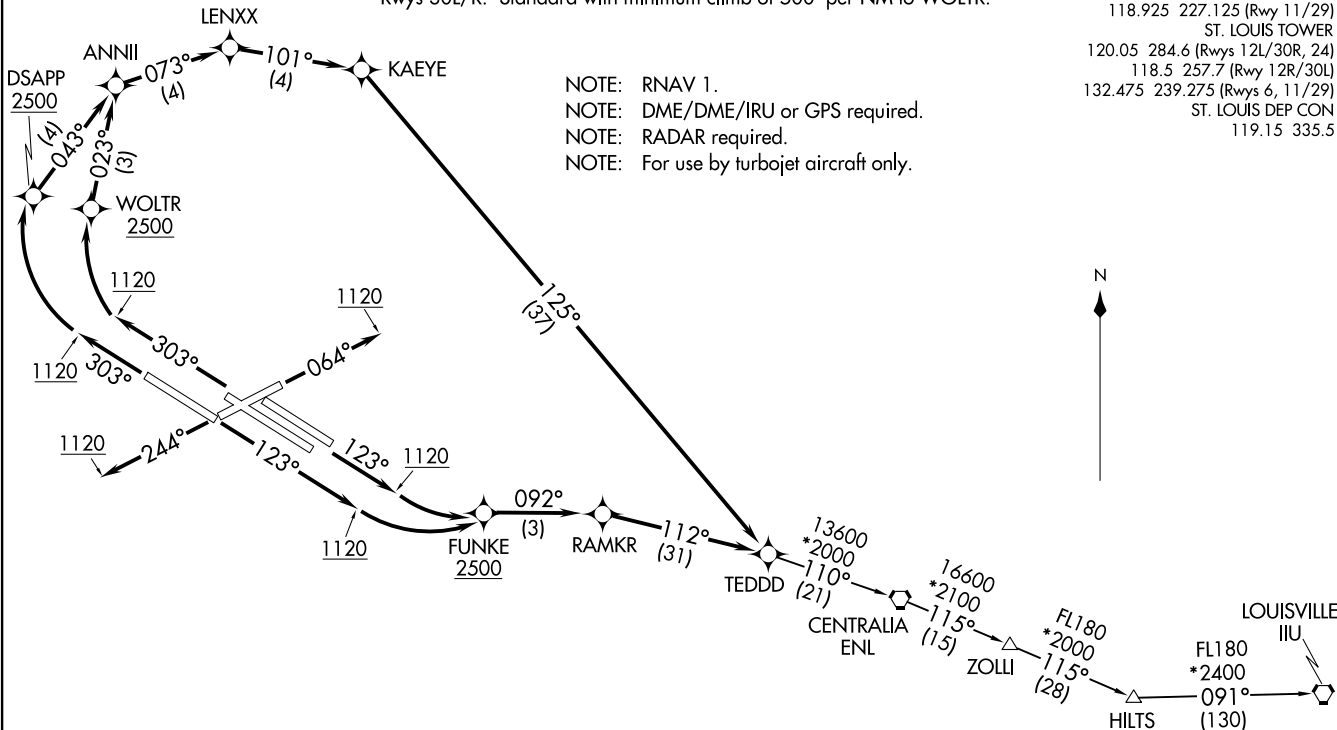
Rwys 11, 12L/R: Standard with minimum climb of 500' per NM to FUNKE.

Rwy 29: Standard with minimum climb of 500' per NM to DSAPP.

Rwys 30L/R: Standard with minimum climb of 500' per NM to WOLTR.

D-ATIS  
125.025 379.925  
CLNC DEL  
119.5 363.1  
CPDLC  
GND CON  
121.9 348.6 (Inbound)  
121.65 377.175 (Outbound)  
118.925 227.125 (Rwy 11/29)  
ST. LOUIS TOWER  
120.05 284.6 (Rwys 12L/30R, 24)  
118.5 257.7 (Rwy 12R/30L)  
132.475 239.275 (Rwys 6, 11/29)  
ST. LOUIS DEP CON  
119.15 335.5

- NOTE: RNAV 1.
- NOTE: DME/DME/IRU or GPS required.
- NOTE: RADAR required.
- NOTE: For use by turbojet aircraft only.



NOTE: Chart not to scale.

(NARRATIVE ON FOLLOWING PAGE)

(TEDD5, TEDDD) 18312

AL-360 (FAA)

ST LOUIS LAMBERT INTL (STL)  
ST. LOUIS, MISSOURI

ST. LOUIS, MISSOURI  
ST LOUIS LAMBERT INTL (STL)



DEPARTURE ROUTE DESCRIPTION

TAKEOFF RUNWAY 6: Climb heading 064° to 1120, then as assigned by ATC, expect RADAR vectors to TEDDD. Thence. . . .

TAKEOFF RUNWAY 24: Climb heading 244° to 1120, then as assigned by ATC, expect RADAR vectors to TEDDD. Thence. . . .

TAKEOFF RUNWAYS 11, 12L/R: Climb heading 123° to 1120, then left turn direct FUNKE, cross FUNKE at or above 2500, then on depicted route to TEDDD. Thence. . . .

TAKEOFF RUNWAY 29: Climb heading 303° to 1120, then right turn direct DSAPP, cross DSAPP at or above 2500, then on depicted route to TEDDD. Thence. . . .

TAKEOFF RUNWAYS 30L/R: Climb heading 303° to 1120, then right turn direct WOLTR, cross WOLTR at or above 2500, then on depicted route to TEDDD. Thence. . . .

. . . . (transition). Maintain 5000, expect filed altitude 10 minutes after departure.

HILTS TRANSITION (TEDDD5.HILTS)

LOUISVILLE TRANSITION (TEDDD5.IIU)

NC-3, 14 MAY 2026 to 11 JUN 2026

NC-3, 14 MAY 2026 to 11 JUN 2026