

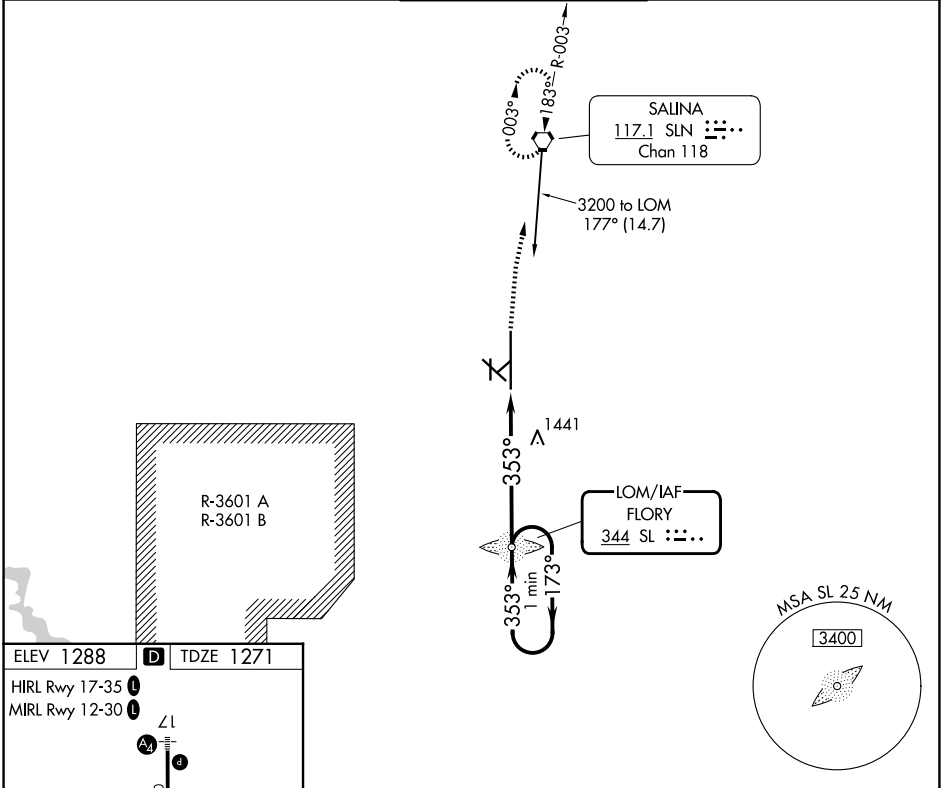
LOM SL <b>344</b>	APP CRS <b>353°</b>	Rwy Ldg TDZE <b>12300</b> <b>1271</b> Apt Elev <b>1288</b>
----------------------	------------------------	--

# NDB RWY 35

SALINA RGNL (SLN)

<p>Cat D Circling NA southwest of runway 12-30. For inop ALS, increase S-35 Cats A/B visibility to 1 SM and Cats C/D to 1 3/8 SM.</p>	<p>MALSR</p>	<p>MISSED APPROACH: Climb to 3000 direct SLN VORTAC and hold.</p>
	<p>3000 SLN</p> <p>VGSI and descent angles not coincident (VGSI Angle 3.00/TCH 48).</p>	

ATIS <b>120.15</b>	KANSAS CITY CENTER <b>134.9 363.2</b>	SALINA TOWER ★ <b>119.3 (CTAF) 1257.7</b>	GND CON <b>121.9 360.8</b>	UNICOM <b>122.95</b>
-----------------------	--	--	-------------------------------	-------------------------



ELEV 1288 **D** TDZE 1271

HIRL Rwy 17-35 **L**  
MIRL Rwy 12-30 **L**

Z1

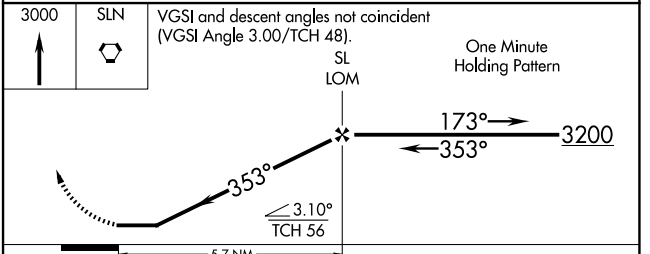
12301 X 1.50

TWR

353°

FAF to MAP 5.7 NM

Knots	60	90	120	150	180
Min:Sec	5:42	3:48	2:51	2:17	1:54



CATEGORY	A	B	C	D
S-35	1760-3/4	489 (500-3/4)	1760-1 489 (500-1)	1760-1 1/4 489 (500-1 1/4)
CIRCLING	1820-1 532 (600-1)	1840-1 552 (600-1)	1860-1 1/2 572 (600-1 1/2)	1860-2 572 (600-2)

NC-2, 14 MAY 2026 to 11 JUN 2026

NC-2, 14 MAY 2026 to 11 JUN 2026