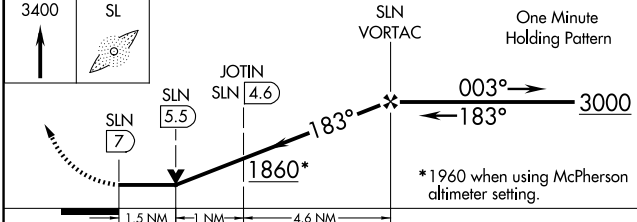
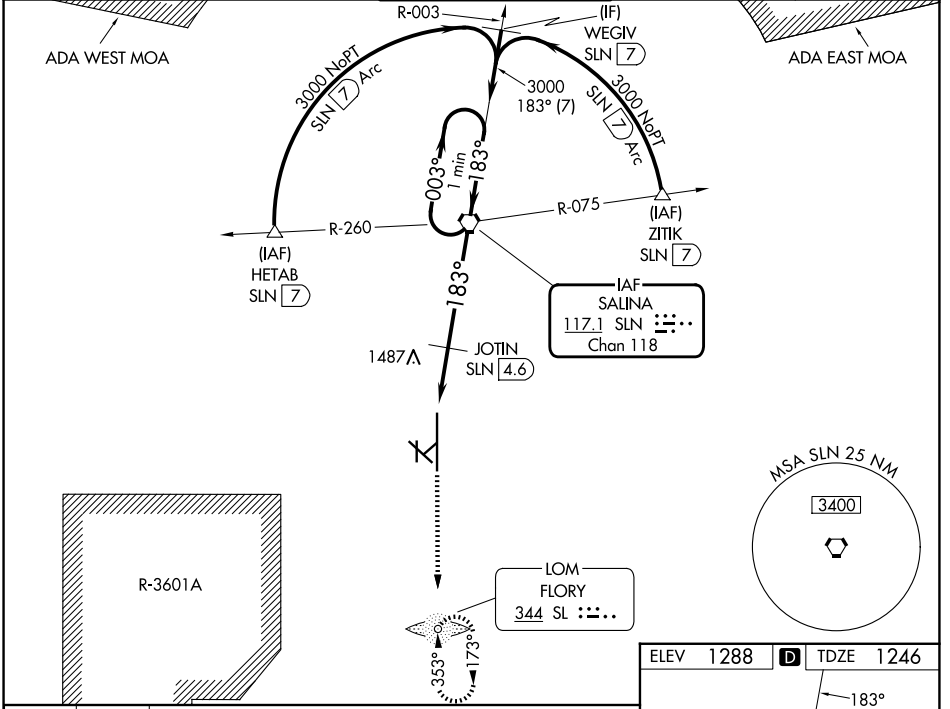


VORTAC SLN 117.1 Chan 118	APP CRS 183°	Rwy Ldg TDZE 1246 Apt Elev 1288
---	------------------------	---

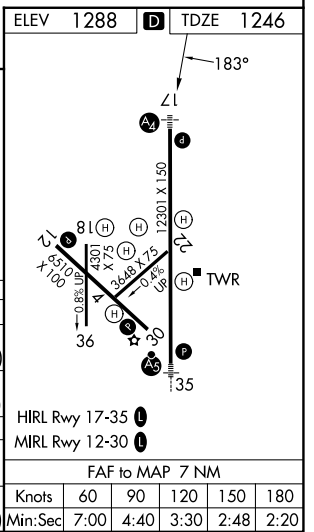
VOR RWY 17

SALINA RGNL (SLN)

<p>▽ Inoperative table does not apply to Cat C/D/E. ▲ Circling NA for Cat D/E southwest of Rwy 12-30. ADF required.</p>	MALS	MISSED APPROACH: Climb to 3400 direct SL LOM and hold.		
	<p>ATIS 120.15</p>	<p>KANSAS CITY CENTER 134.9 363.2</p>	<p>SALINA TOWER * 119.3 (CTAF) 0 257.7</p>	<p>GND CON 121.9 360.8</p>



CATEGORY	A	B	C	D	E
S-17	1860-3/4 614 (600-3/4)		1860-1 3/4 614 (600-1 3/4)	1860-2 614 (600-2)	1860-2 1/4 614 (600-2 1/4)
CIRCLING	1860-1 572 (600-1)		1860-1 3/4 572 (600-1 3/4)	1860-2 572 (600-2)	1920-2 1/4 632 (700-2 1/4)
JOTIN FIX MINIMUMS					
S-17	1760-3/4 514 (500-3/4)		1760-1 1/2 514 (500-1 1/2)	1760-1 3/4 514 (500-1 3/4)	
CIRCLING	1820-1 532 (600-1)	1840-1 552 (600-1)	1860-1 1/2 572 (600-1 1/2)	1860-2 572 (600-2)	1920-2 1/4 632 (700-2 1/4)



NC-2, 14 MAY 2026 to 11 JUN 2026

NC-2, 14 MAY 2026 to 11 JUN 2026

FAF to MAP 7 NM	Knots	60	90	120	150	180
	Min:Sec	7:00	4:40	3:30	2:48	2:20