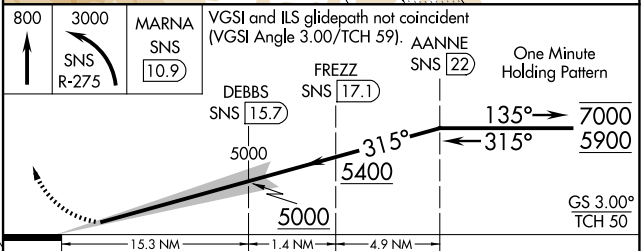
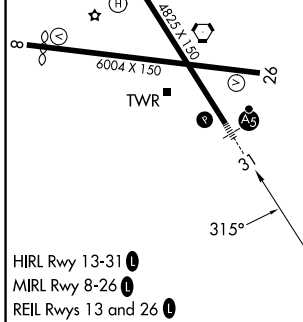
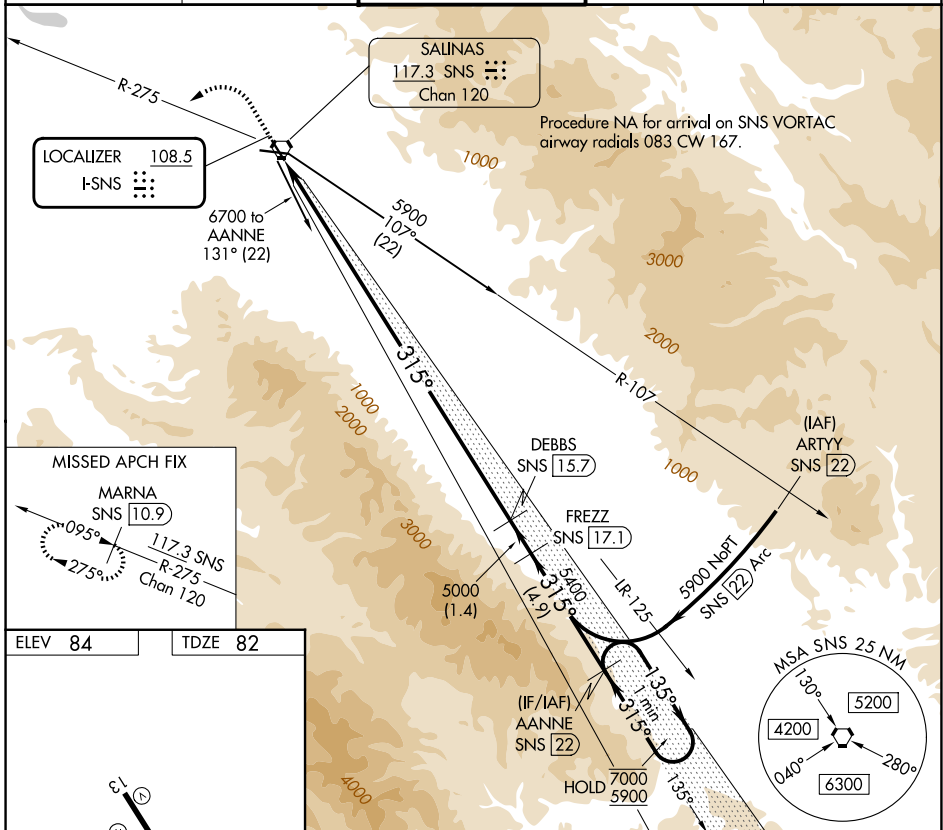


LOC I-SNS <b>108.5</b>	APP CRS <b>315°</b>	Rwy Ldg TDZE Apt Elev	<b>4825</b> <b>82</b> <b>84</b>
---------------------------	------------------------	-----------------------------	---------------------------------------

# ILS RWY 31

SALINAS MUNI (SNS)

DME required.		MALSR	MISSED APPROACH: Climb to 800, then climbing left turn to 3000 on SNS VORTAC R-275 to MARNA/SNS 10.9 DME and hold, continue climb-in-hold to 3000.				
DME from SNS VORTAC. DME use requires simultaneous reception of I-SNS and SNS DME.			ATIS <b>124.85</b>	NORCAL APP CON <b>133.0 251.15</b>	SALINAS TOWER* <b>119.525 (CTAF) 239.3</b>	GND CON <b>121.7</b>	UNICOM <b>123.0</b>



CATEGORY	A	B	C	D
S-ILS 31	302/24 220 (300-1/2)			

SW-2, 14 MAY 2026 to 11 JUN 2026

SW-2, 14 MAY 2026 to 11 JUN 2026