

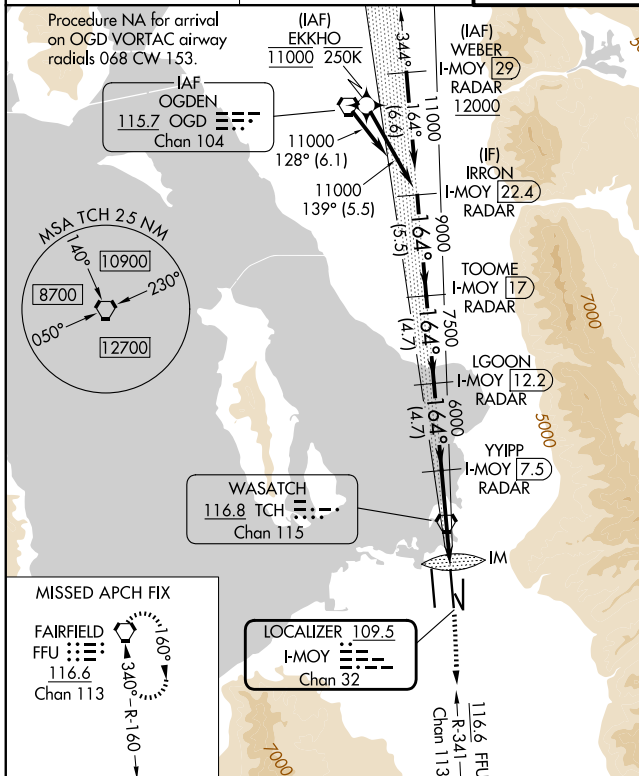
|   |                        |  |
|---|------------------------|--|
| LOC/DME I-MOY<br><b>109.5</b><br>Chan <b>32</b> | APP CRS<br><b>164°</b> | Rwy Ldg <b>12002</b><br>TDZE <b>4231</b><br>Apt Elev <b>4231</b> |
|---|------------------------|--|

# ILS RWY 16L (CAT II & III)

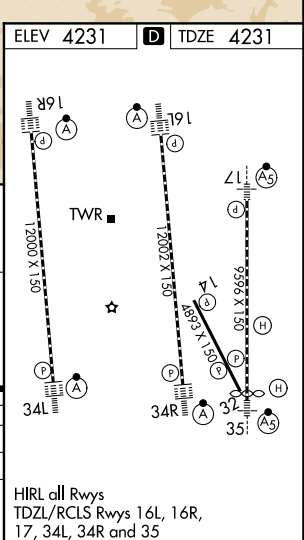
SALT LAKE CITY INTL (SLC)

|  |             |  |
|--|-------------|--|
| RNP APCH - GPS. From EKKHO.  | ALSIF-2<br> | MISSED APPROACH: Climb to 4800 then climb to 10000 on FFU VORTAC R-341 to FFU VORTAC and hold. |
| DME or RADAR required. RADAR required for procedure entry at WEBER.  |             |  |
| <p>Simultaneous approach authorized. CAT II: RVR 1000 authorized with specific OPSPEC, MSPEC, or LOA approval and use of autoland or HUD to touchdown.</p> |             |  |

|                                 |  |   |                                 |
|---------------------------------|--|---|---------------------------------|
| D-ATIS<br><b>124.75 125.625</b> | SALT LAKE CITY APP CON<br><b>125.7 284.6</b> | SALT LAKE CITY TOWER<br><b>119.05 257.8</b> | GND CON<br><b>123.775 348.6</b> |
|---------------------------------|--|---|---------------------------------|



|   |                      |                        |                       |           |       |
|---|----------------------|------------------------|-----------------------|-----------|-------|
| IRRON I-MOY 22.4 RADAR  | TOOME I-MOY 17 RADAR | LGOON I-MOY 12.2 RADAR | YYIPP I-MOY 7.5 RADAR | IM 4331   | FFU   |
| VGS1 and ILS glidepath not coincident (VGS1 Angle 3.00/TCH 70). |                      |                        |                       | 4800      | 10000 |
| GS 3.00° TCH 55   |                      |                        |                       | FFU R-341 |       |
| <p>5.5 NM    4.7 NM    4.7 NM    5.4 NM    1026'</p>            |                      |                        |                       |           |       |



|           |                              |   |   |   |
|-----------|------------------------------|---|---|---|
| CATEGORY  | A                            | B | C | D |
| S-ILS 16L | CAT II RA 109/12 100 DA 4331 |   |   |   |
| S-ILS 16L | CAT III RVR 03               |   |   |   |

## CATEGORY II & III ILS - SPECIAL AIRCREW & AIRCRAFT CERTIFICATION REQUIRED

HIRL all Rwws  
TDZL/RCLS Rwws 16L, 16R, 17, 34L, 34R and 35

SW-4, 14 MAY 2026 to 11 JUN 2026

SW-4, 14 MAY 2026 to 11 JUN 2026