

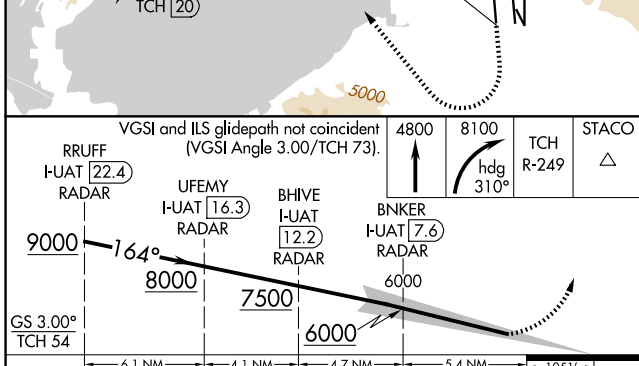
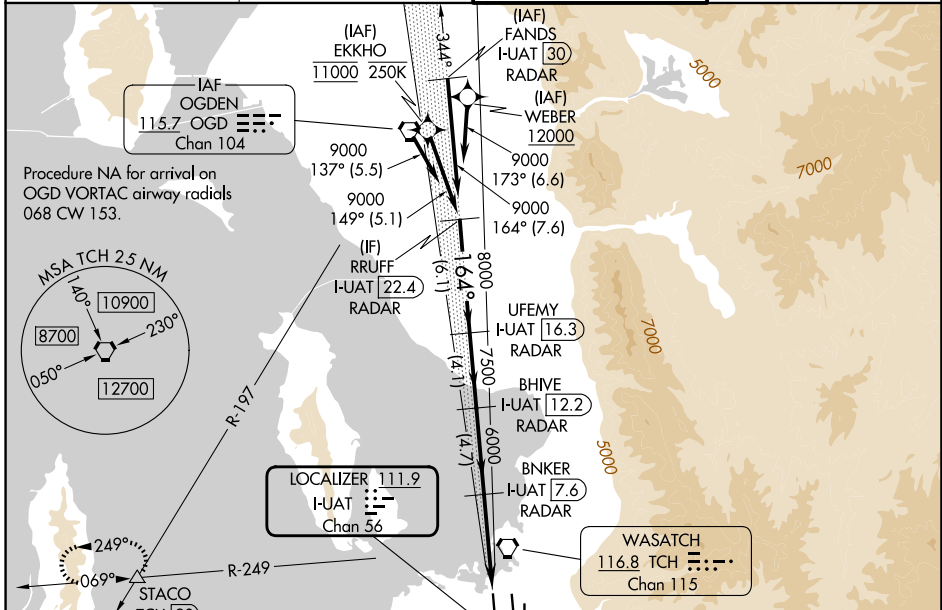
| | | |
|---|------------------------|---|
| LOC/DME I-UAT 111.9 Chan 56 | APP CRS 164° | Rwy Ldg 12000 TDZE 4226 Apt Elev 4231 |
|---|------------------------|---|

ILS RWY 16R (CAT II & III)

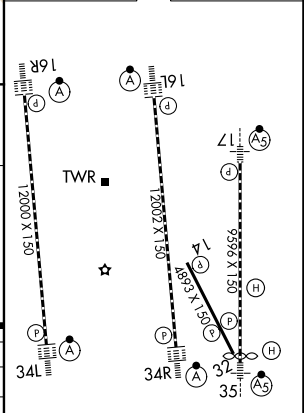
SALT LAKE CITY INTL (SLC)

| | | |
|--|------------|---|
| RNP APCH - GPS. From EKKHO or WEBER. DME or RADAR required. | ALSF-2 | MISSED APPROACH: Climb to 4800 then climbing right turn to 8100 on heading 310° and on TCH VORTAC R-249 to STACO INT/TCH 20 DME and hold. |
| <p>Simultaneous approach authorized. CAT II: RVR 1000 authorized with specific OPSPEC, MSPEC, or LOA approval and use of autoland or HUD to touchdown.</p> | | |

| | | | |
|---------------------------------|--|---|---------------------------------|
| D-ATIS 124.75 125.625 | SALT LAKE CITY APP CON 125.7 284.6 | SALT LAKE CITY TOWER 132.65 336.4 | GND CON 123.775 348.6 |
|---------------------------------|--|---|---------------------------------|



| | | |
|-----------|---|-----------|
| ELEV 4231 | D | TDZE 4226 |
|-----------|---|-----------|



| | | | | |
|-----------|------------------------------|---|---|---|
| CATEGORY | A | B | C | D |
| S-ILS 16R | CAT II RA 104/12 100 DA 4326 | | | |
| S-ILS 16R | CAT III RVR 03 | | | |

CATEGORY II & III ILS - SPECIAL AIRCREW & AIRCRAFT CERTIFICATION REQUIRED

HIRL all Rwys
TDZL/RCLS Rwys 16L, 16R, 17, 34L, 34R, and 35

SW-4, 14 MAY 2026 to 11 JUN 2026

SW-4, 14 MAY 2026 to 11 JUN 2026