

LOC/DME I-UAT 111.9 Chan 56	APP CRS 164°	Rwy Ldg 12000 TDZE 4226 Apt Elev 4231
---	------------------------	---

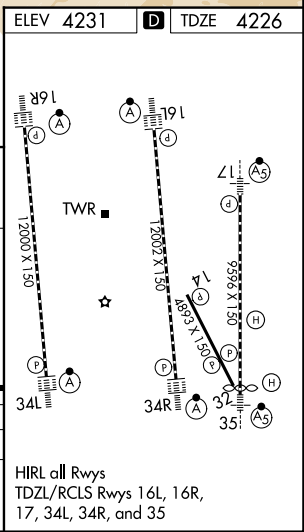
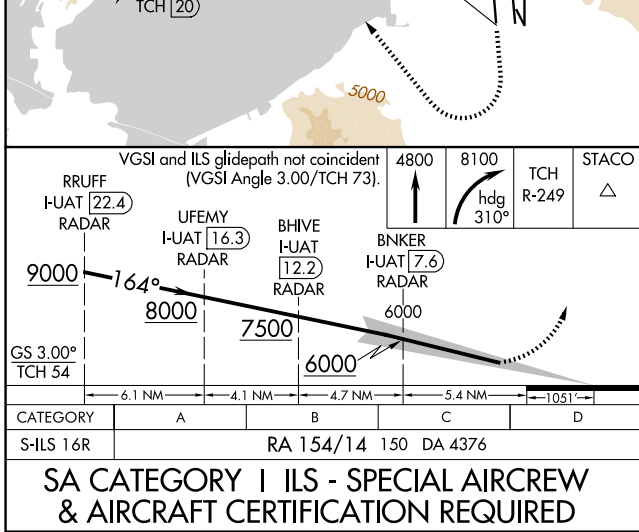
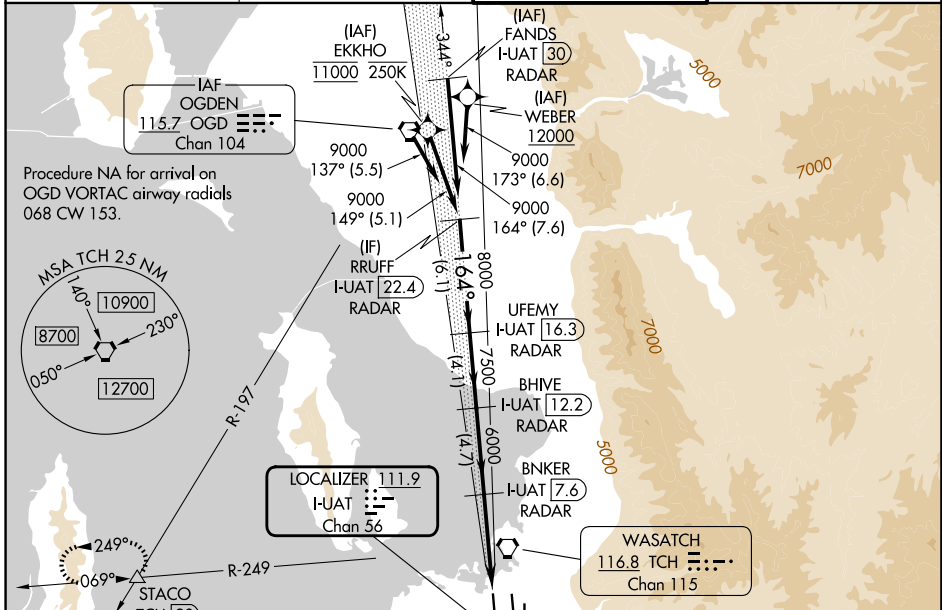
ILS RWY 16R (SA CAT I)

SALT LAKE CITY INTL (SLC)

RNP APCH - GPS. From EKKHO or WEBER.
DME or RADAR required.
Simultaneous approach authorized.
Requires specific OPSPEC, MSPEC, or LOA approval.

ALSIF-2
MISSED APPROACH: Climb to 4800 then climbing right turn to 8100 on heading 310° and on TCH VORTAC R-249 to STACO INT/TCH 20 DME and hold.

D-ATIS 124.75 125.625	SALT LAKE CITY APP CON 125.7 284.6	SALT LAKE CITY TOWER 132.65 336.4	GND CON 123.775 348.6
---------------------------------	--	---	---------------------------------



HIRL all Rwys
TDZL/RCLS Rws 16L, 16R,
17, 34L, 34R, and 35

SW-4, 14 MAY 2026 to 11 JUN 2026

SW-4, 14 MAY 2026 to 11 JUN 2026