

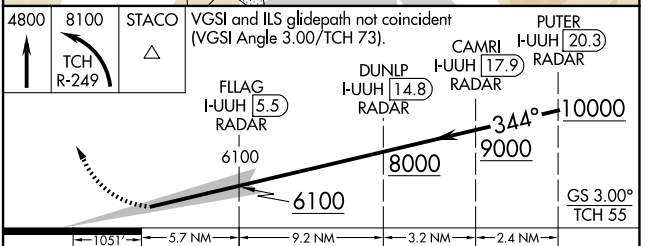
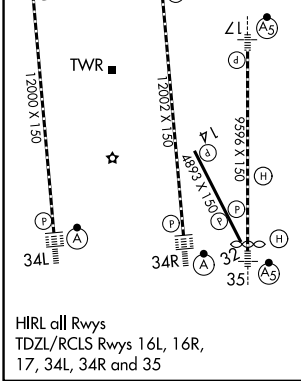
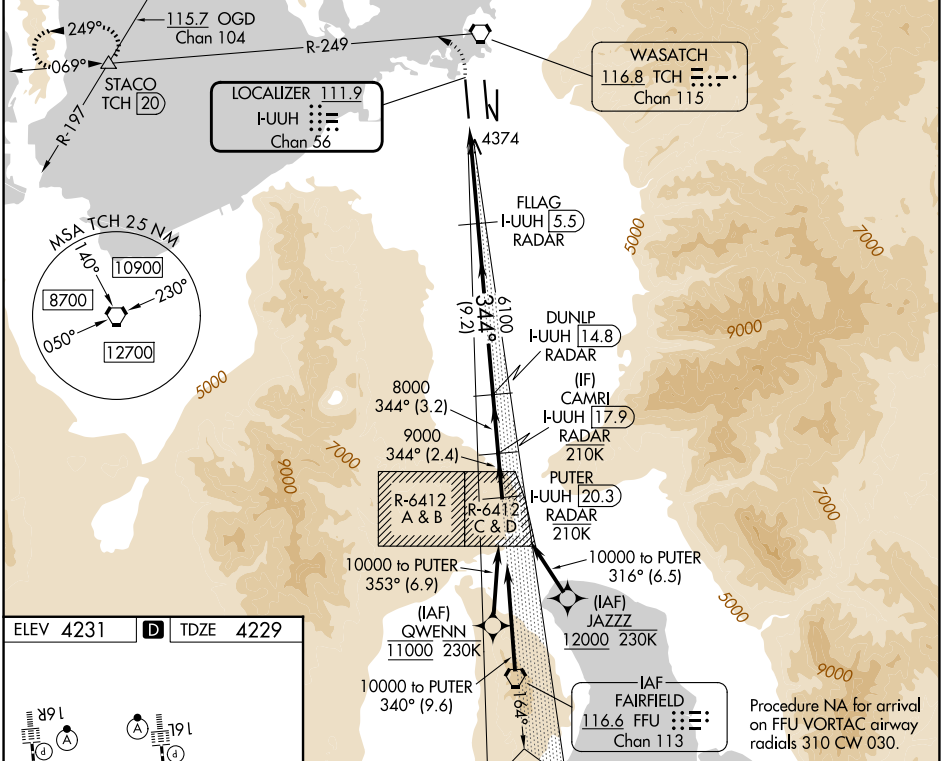
LOC/DME I-UUH 111.9 Chan 56	APP CRS 344°	Rwy Ldg TDZE 12000 4229	Apt Elev 4231
--	------------------------	---	-------------------------

ILS RWY 34L (SA CAT I)

SALT LAKE CITY INTL (SLC)

RNP APCH-GPS. From GWENN or JAZZ.		ALSF-2 	MISSED APPROACH: Climb to 4800 then climbing left turn to 8100 on TCH VORTAC R-249 to STACO INT/TCH 20 DME and hold.
DME or RADAR required.			
Simultaneous approach authorized. Requires specific OPSPEC, MSPEC, or LOA approval.			

D-ATIS 124.75 125.625	SALT LAKE CITY APP CON 125.7 284.6	SALT LAKE CITY TOWER 132.65 336.4	GND CON 123.775 348.6
---------------------------------	--	---	---------------------------------



CATEGORY	A	B	C	D
S-ILS 34L	RA 157/14 150 DA 4379			
SA CATEGORY I ILS - SPECIAL AIRCREW & AIRCRAFT CERTIFICATION REQUIRED				

SW-4, 14 MAY 2026 to 11 JUN 2026

SW-4, 14 MAY 2026 to 11 JUN 2026