

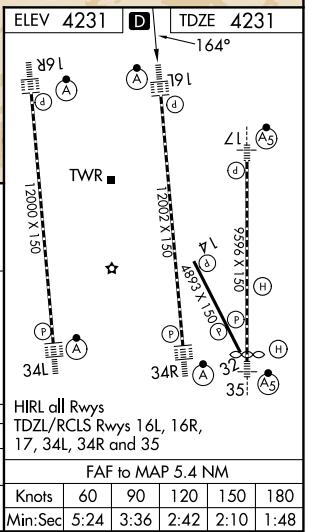
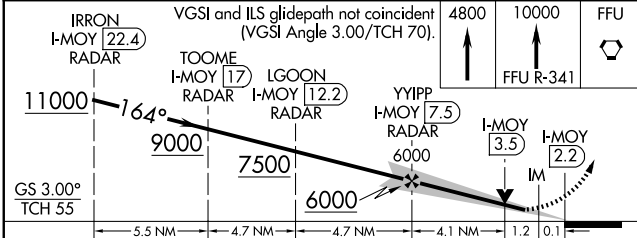
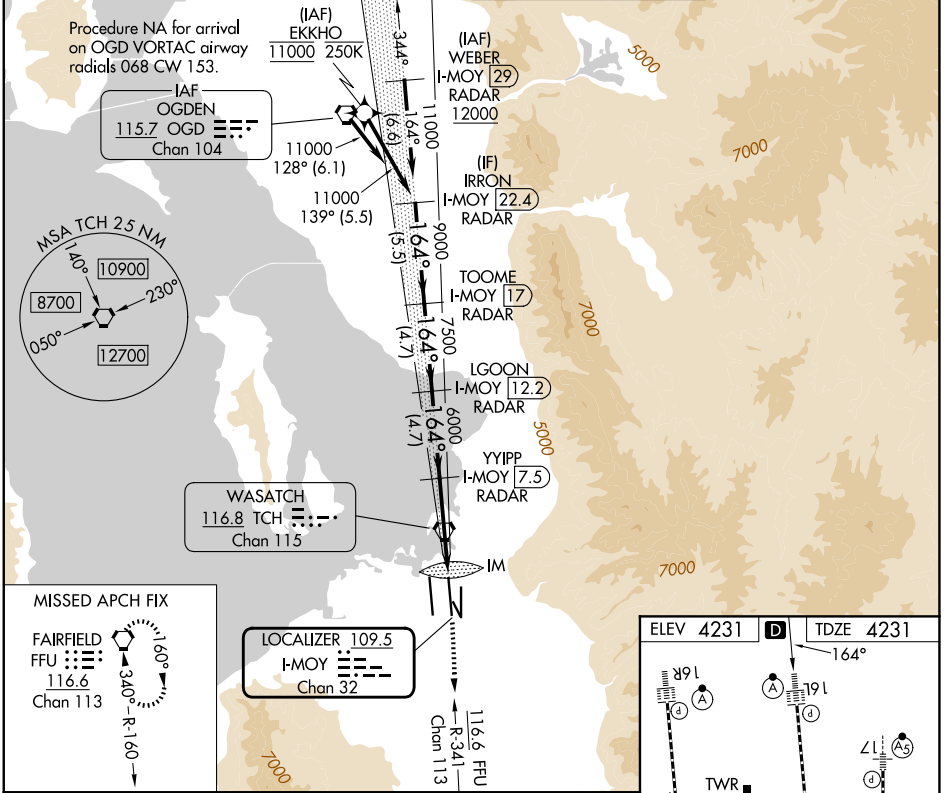
LOC/DME I-MOY <b>109.5</b> Chan <b>32</b>	APP CRS <b>164°</b>	Rwy Ldg <b>12002</b> TDZE <b>4231</b> Apt Elev <b>4231</b>
---	------------------------	--

# ILS or LOC RWY 16L

SALT LAKE CITY INTL (SLC)

RNP APCH-GPS. From EKKHO.	ALSIF-2 	MISSED APPROACH: Climb to 4800 then climb to 10000 on FFU VORTAC R-341 to FFU VORTAC and hold.
DME or RADAR required. RADAR required for procedure entry at WEBER.		
Simultaneous approach authorized. For inop ALS, increase S-LOC 16L Cat C/D visibility to 1 3/8 SM.		

D-ATIS <b>124.75 125.625</b>	SALT LAKE CITY APP CON <b>125.7 284.6</b>	SALT LAKE CITY TOWER <b>119.05 257.8</b>	GND CON <b>123.775 348.6</b>
---------------------------------	--	---	---------------------------------



CATEGORY	A	B	C	D
S-ILS 16L		4431/18	200 (200-1/2)	
S-LOC 16L	4720/24	489 (500-1/2)	4720/50	489 (500-1)

SW-4, 14 MAY 2026 to 11 JUN 2026

SW-4, 14 MAY 2026 to 11 JUN 2026

HIRL all Rwys  
TDZL/RCLS Rwy 16L, 16R, 17, 34L, 34R and 35

FAF to MAP 5.4 NM					
Knots	60	90	120	150	180
Min:Sec	5:24	3:36	2:42	2:10	1:48