

LOC/DME I-UAT 111.9 Chan 56	APP CRS 164°	Rwy Ldg 12000 TDZE 4226 Apt Elev 4231
---	------------------------	---

ILS or LOC RWY 16R

SALT LAKE CITY INTL (SLC)

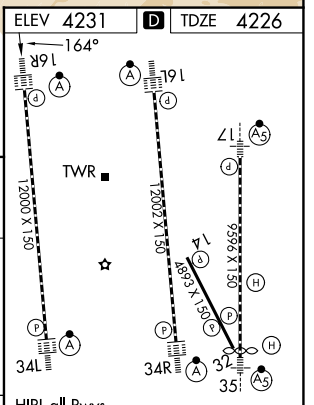
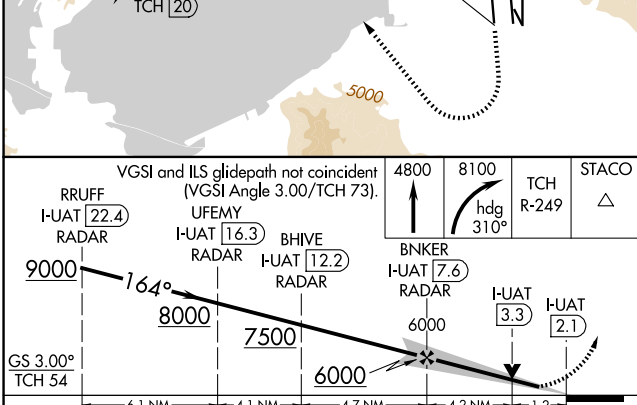
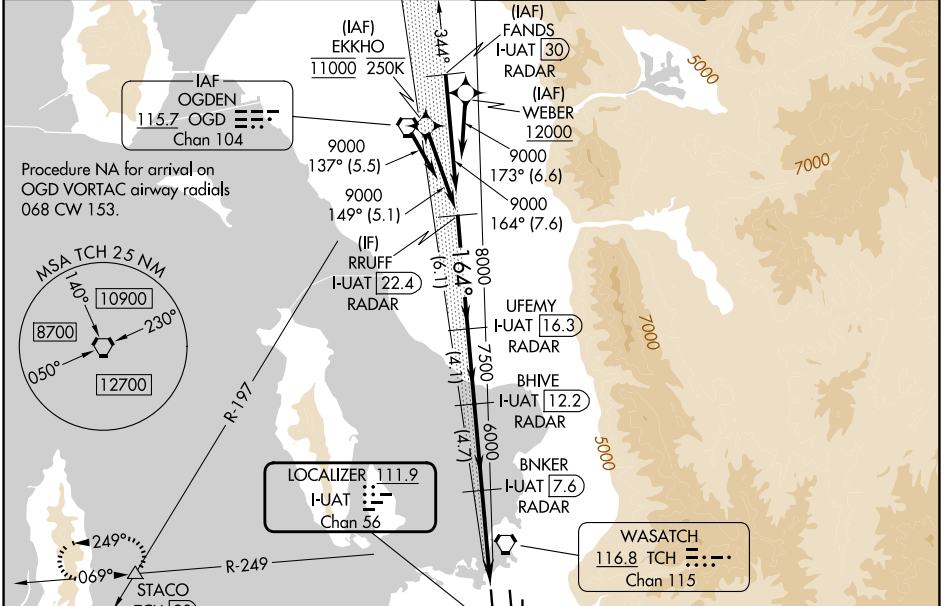
RNP APCH - GPS. From EKKHO or WEBER.
DME or RADAR required.

Simultaneous approach authorized. For inop ALS, increase S-LOC 16R Cat A and B visibilities to RVR 5500, and Cat C and D visibilities to 1% SM.

ALSF-2

MISSED APPROACH: Climb to 4800 then climbing right turn to 8100 on heading 310° and on TCH VORTAC R-249 to STACO INT/TCH 20 DME and hold.

D-ATIS 124.75 125.625	SALT LAKE CITY APP CON 125.7 284.6	SALT LAKE CITY TOWER 132.65 336.4	GND CON 123.775 348.6
---------------------------------	--	---	---------------------------------



CATEGORY	A	B	C	D
S-ILS 16R	4426/18		200 (200-½)	
S-LOC 16R	4680/24	454 (500-½)	4680/45	454 (500-¾)

HIRL all Rwy's
TDZL/RCLS Rwy's 16L, 16R, 17, 34L, 34R, and 35

FAF to MAP 5.4 NM

Knots	60	90	120	150	180
Min:Sec	5:24	3:36	2:42	2:10	1:48

SW-4, 14 MAY 2026 to 11 JUN 2026

SW-4, 14 MAY 2026 to 11 JUN 2026