

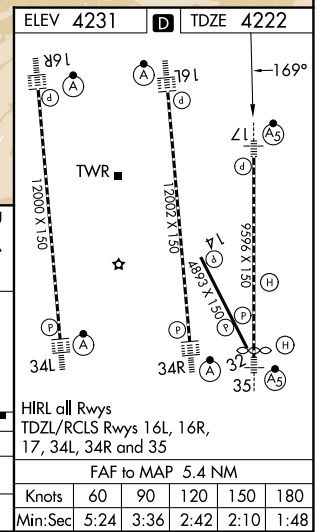
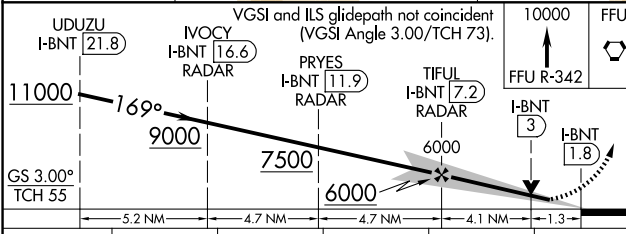
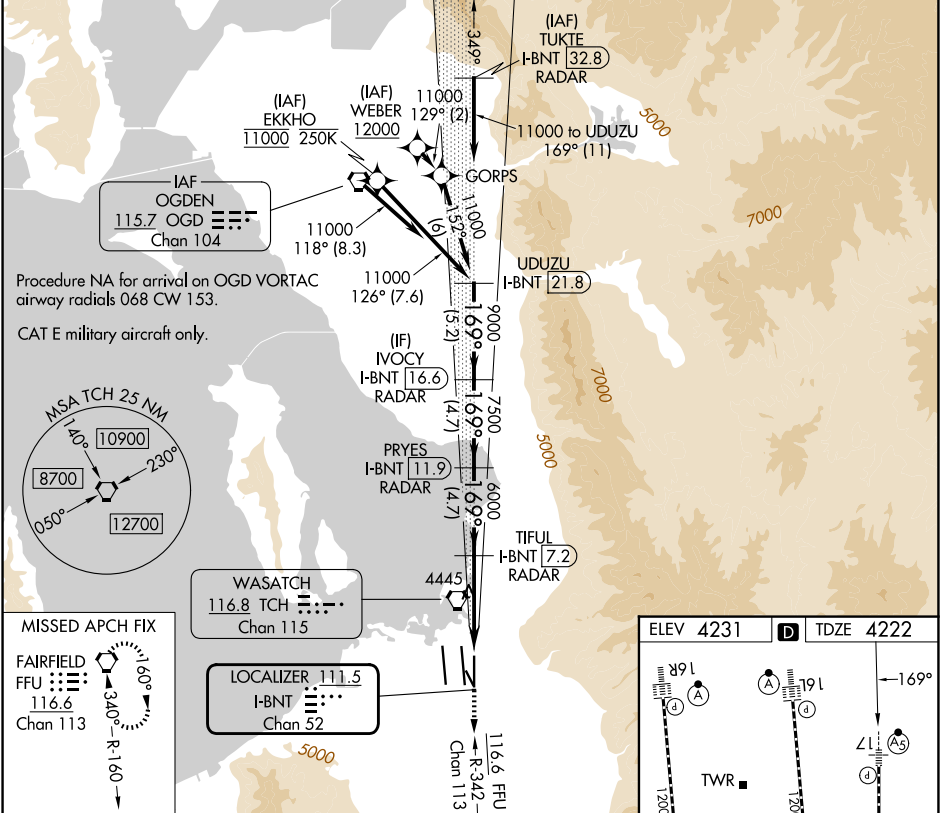
LOC/DME I-BNT <b>111.5</b> Chan <b>52</b>	APP CRS <b>169°</b>	Rwy Ldg TDZE <b>9596</b> <b>4222</b>	Apt Elev <b>4231</b>
-------------------------------------------------	------------------------	--------------------------------------------	-------------------------

# ILS or LOC RWY 17

SALT LAKE CITY INTL (SLC)

RNP APCH-GPS. From WEBER or EKKHO.	MALSR 	MISSED APPROACH: Climb to 10000 on FFU VORTAC R-342 to FFU VORTAC and hold.
DME or RADAR required. RADAR required for procedure entry at TUKTE.		
<p>Simultaneous approach authorized. For inop ALS, increase S-ILS 17 Cat E visibility to RVR 4000, increase S-LOC 17 Cat C/D/E visibility to 1/2 SM.</p>		

D-ATIS <b>124.75 125.625</b>	SALT LAKE CITY APP CON <b>125.7 284.6</b>	SALT LAKE CITY TOWER <b>118.3 257.8</b>	GND CON <b>121.9 348.6</b>
---------------------------------	----------------------------------------------	--------------------------------------------	-------------------------------



CATEGORY	A	B	C	D	E
S-ILS 17	4422/18 200 (200-1/2)				
S-LOC 17	4700/24	478 (500-1/2)	4700/50 478 (500-1)		

SW-4, 14 MAY 2026 to 11 JUN 2026

SW-4, 14 MAY 2026 to 11 JUN 2026