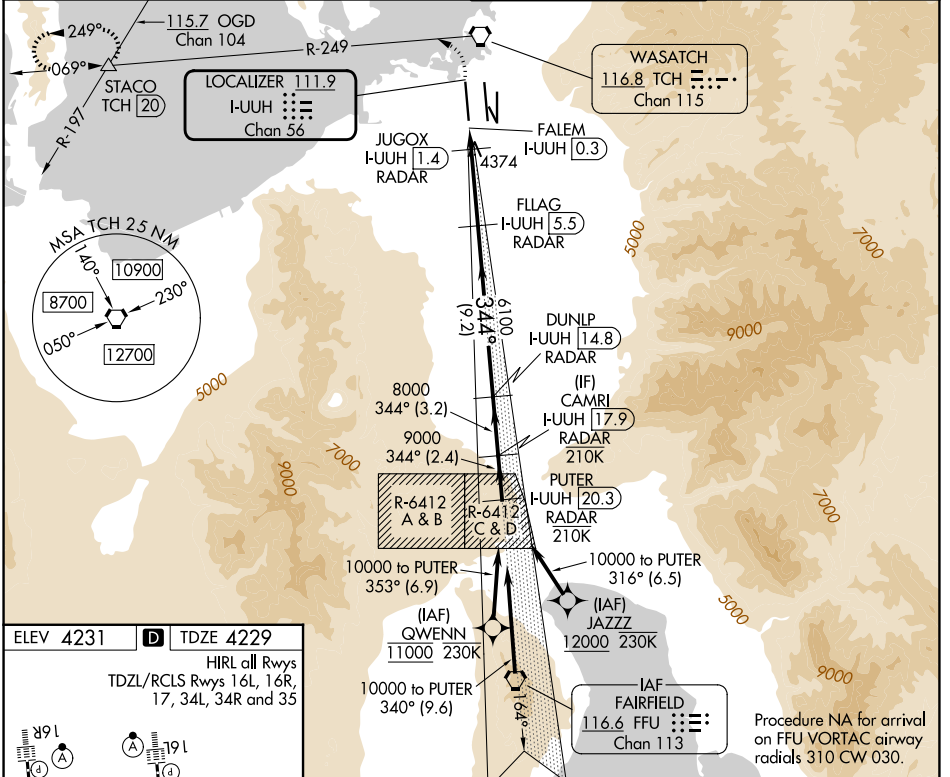


LOC/DME I-UUH 111.9 Chan 56	APP CRS 344°	Rwy Ldg TDZE 12000 4229	Apt Elev 4231
--	------------------------	---	-------------------------

ILS or LOC RWY 34L

SALT LAKE CITY INTL (SLC)

RNP APCH-GPS. From GWENN or JAZZ.		ALSIF-2	MISSED APPROACH: Climb to 4800 then climbing left turn to 8100 on TCH VORTAC R-249 to STACO INT/TCH 20 DME and hold.
DME or RADAR required.		(A)	
⚠ Simultaneous approach authorized. For inop ALS, increase S-LOC 34L Cat C/D visibility to RVR 6000.			
D-ATIS 124.75 125.625	SALT LAKE CITY APP CON 125.7 284.6	SALT LAKE CITY TOWER 132.65 336.4	GND CON 123.775 348.6



4800	8100	STACO	VGSI and ILS glidepath not coincident (VGSI Angle 3.00/TCH 73).	PUTER
TCH R-249				I-UUH 20.3
I-UUH DME ANTENNA	JUGOX I-UUH 1.4	FLAG I-UUH 5.5	DUNLP I-UUH 14.8	CAMRI I-UUH 17.9
FALEM I-UUH 0.3		6100		
		4780	8000	9000
				10000
				GS 3.00° TCH 55
CATEGORY	A	B	C	D
S-ILS 34L	4429/18 200 (200-½)			
S-LOC 34L	4640/24 411 (500-½)	4640/40 411 (500-¾)		

SW-4, 14 MAY 2026 to 11 JUN 2026

SW-4, 14 MAY 2026 to 11 JUN 2026