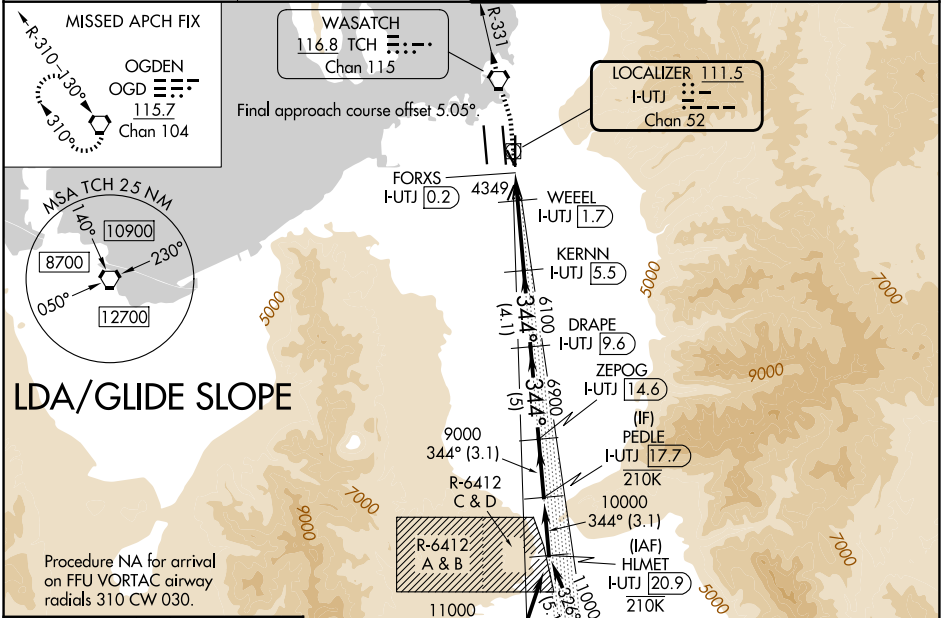


LOC/DME I-UTJ 111.5 Chan 52	APP CRS 344°	Rwy Ldg 9272 TDZE 4227 Apt Elev 4231
---	------------------------	---

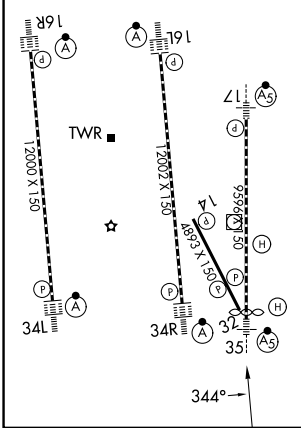
LDA RWY 35

SALT LAKE CITY INTL (SLC)

RNP APCH-GPS. From GWENN or JAZZ.		MALS R	MISSED APPROACH: Climb to 4800 then climbing left turn to 9000 direct TCH VORTAC and on TCH VORTAC R-331 to OGD VORTAC and hold.
DME required. RADAR required for procedure entry at HLMET.			
<p>Simultaneous approach authorized. For inop ALS, increase S-LDA/GS 35 all Cats visibility to RVR 4000, increase S-LDA 35 Cat E visibility to 1¼ SM. Cat E restricted to USAF/USN aircraft.</p>			
D-ATIS 124.75 125.625	SALT LAKE CITY APP CON 125.7 284.6	SALT LAKE CITY TOWER 118.3 257.8	GND CON 121.9 348.6



ELEV 4231	D	TDZE 4227
HIRL all Rwys TDZL/RCLS Rwys 16L, 16R, 17, 34L, 34R and 35		



4800	9000	TCH	TCH R-331	OGD	VGSi and LDA glidepath not coincident (VGSi Angle 3.00/TCH 74).	PEDLE I-UTJ 17.7
I-UTJ DME ANTENNA	FORXS I-UTJ 0.2	WEEL I-UTJ 1.7	KERNN I-UTJ 5.5	DRAPE I-UTJ 9.6	ZEPOG I-UTJ 14.6	10000
0.4	0.7	0.8	3.8 NM	4.1 NM	5 NM	3.1 NM
4900	6100	6900	9000	10000	GS 3.00° TCH 55	
CATEGORY	A	B	C	D	E	
S-LDA/GS 35	4477/24		250 (300-½)			
S-LDA 35	4660/24	433 (500-½)	4660/40	433 (500-¾)		

SW-4, 14 MAY 2026 to 11 JUN 2026

SW-4, 14 MAY 2026 to 11 JUN 2026