

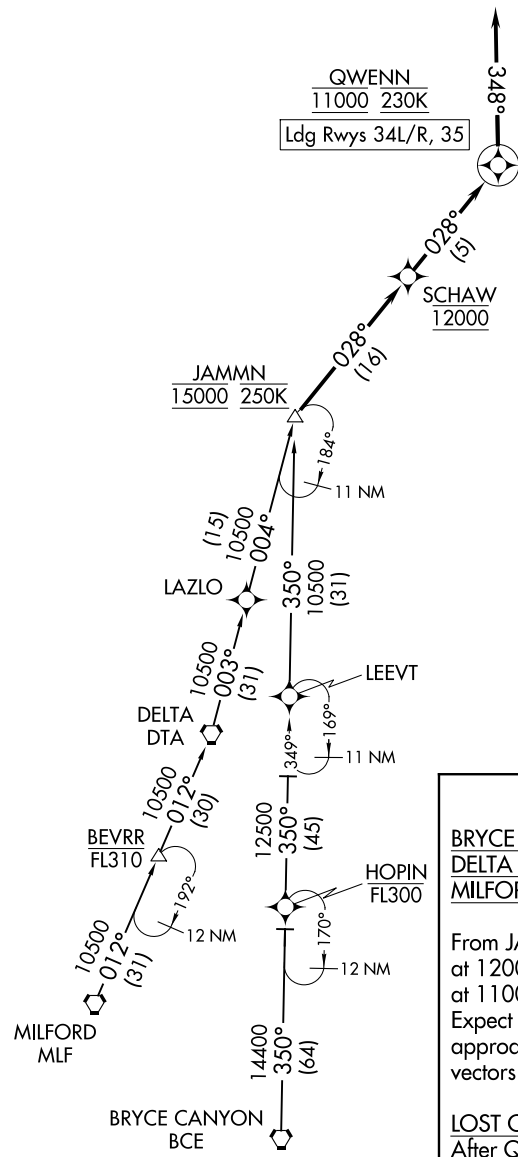
# QWENN SEVEN ARRIVAL (RNAV)

SALT LAKE CITY APP CON  
128.6 322.3  
D-ATIS  
124.75 125.625

RNAV 1 - GPS.  
RADAR required.

SW-4, 14 MAY 2026 to 11 JUN 2026

SW-4, 14 MAY 2026 to 11 JUN 2026



NOTE: Jet aircraft only.  
NOTE: GPS required.

### ARRIVAL ROUTE DESCRIPTION

- BRYCE CANYON TRANSITION (BCE.QWENN7)
- DELTA TRANSITION (DTA.QWENN7)
- MILFORD TRANSITION (MLF.QWENN7)

From JAMMN on track 028° to cross SCHAW at 12000, then on track 028° to cross QWENN at 11000 and at 230K, then on track 348°. Expect RADAR vectors for ILS or RNAV approach to Rwy 34L/R, 35 or RADAR vectors to final approach course.

### LOST COMMUNICATIONS

After QWENN, proceed on the ILS or LOC RWY 34R approach.

NOTE: Chart not to scale.

# QWENN SEVEN ARRIVAL (RNAV)