

APP CRS 164°	Rwy Ldg 12002
	TDZE 4231
	Apt Elev 4231


RNAV (RNP) Z RWY 16L

SALT LAKE CITY INTL (SLC)

RNP AR APCH - GPS.

▼ For uncompensated Baro-VNAV systems, procedure NA below -10°C or above 54°C. Simultaneous approach authorized. For inop ALS, increase RNP 0.16 all Cats visibility RVR to 5500, increase RNP 0.16 (323) all Cats visibility to RVR 4500 and increase RNP 0.30 all Cats visibility to RVR 5500.

ALSF-2

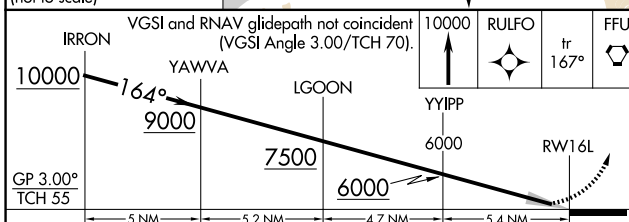
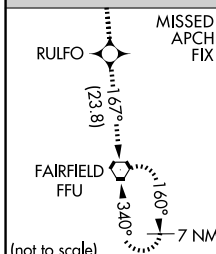
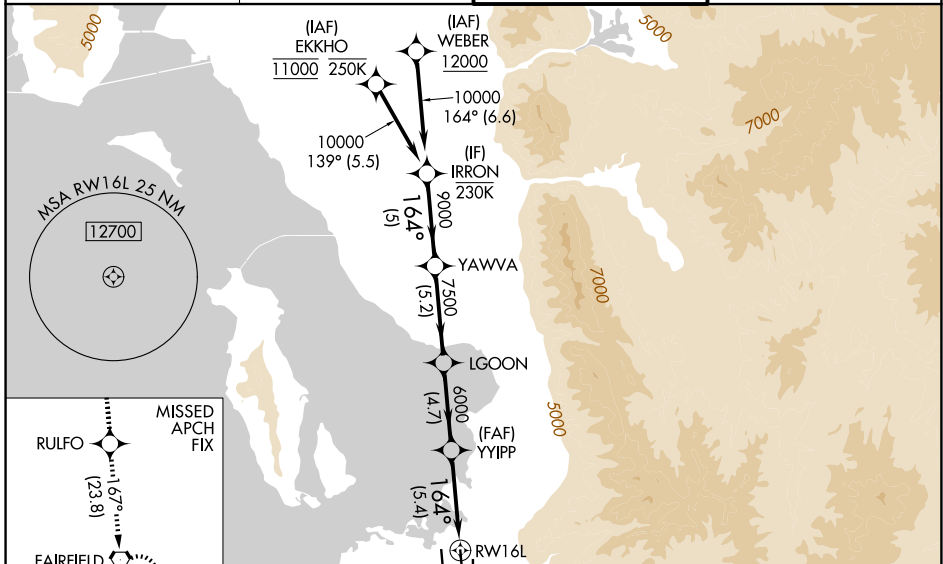


MISSED APPROACH: Climb to 10000 direct RULFO and on track 167° to FFU VORTAC and hold.

* Missed approach requires minimum climb of 323 feet per NM to 4740.

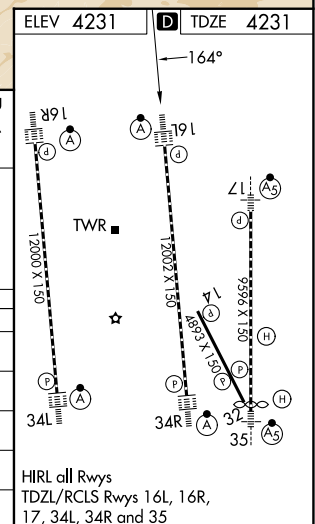
Missed approach requires minimum climb of 256 feet per NM to 4760.

D-ATIS 124.75 125.625	SALT LAKE CITY APP CON 125.7 284.6	SALT LAKE CITY TOWER 119.05 257.8	GND CON 123.775 348.6
---------------------------------	--	---	---------------------------------



CATEGORY	A	B	C	D
RNP 0.16 DA*	4516/24 285 (300-½)			NA
RNP 0.30 DA#	4565/26 334 (400-½)			
RNP 0.16 DA	4573/30 342 (400-¾)			NA
RNP 0.30 DA	4592/35 361 (400-¾)			

AUTHORIZATION REQUIRED



SW-4, 14 MAY 2026 to 11 JUN 2026

SW-4, 14 MAY 2026 to 11 JUN 2026