

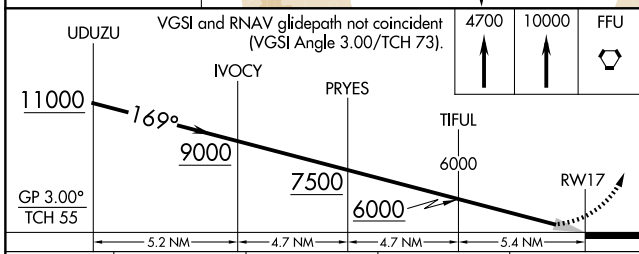
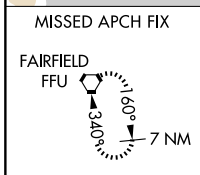
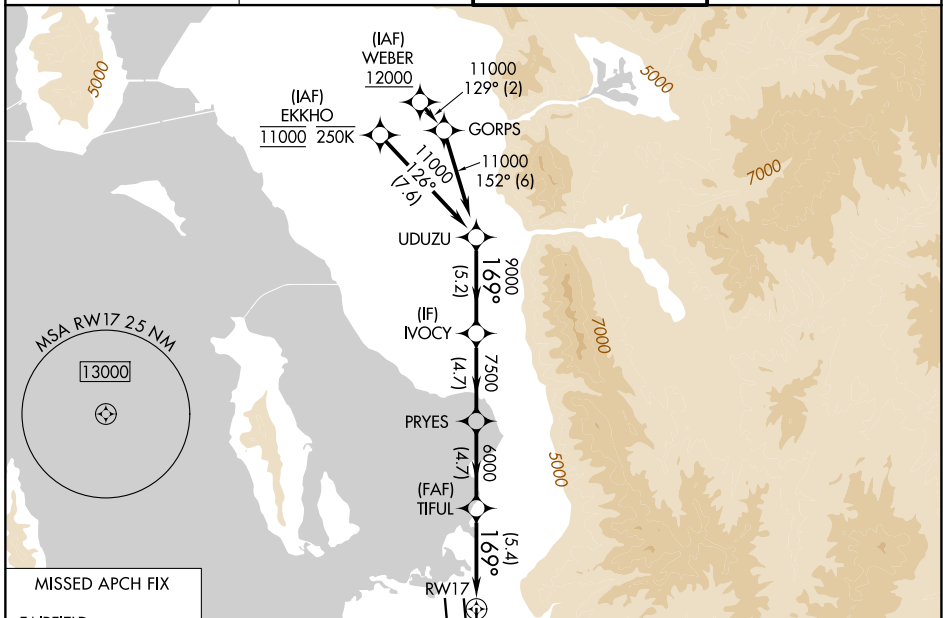
APP CRS	Rwy Ldg	9596
169°	TDZE	4222
	Apt Elev	4231

RNAV (RNP) Z RWY 17

SALT LAKE CITY INTL (SLC)

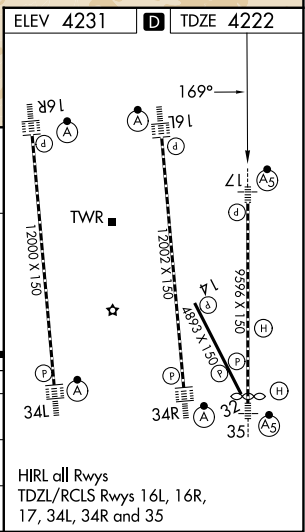
RNP AR APCH - GPS.		MALSR	MISSED APPROACH: Climb to 4700 then climb to 10000 direct FFU VORTAC and hold.
▼ For uncompassated Baro-VNAV systems, procedure NA below -10°C or above 54°C. Simultaneous approach authorized. For inop ALS, increase RNP 0.20 all Cats visibility to RVR 4000 and RNP 0.30 all Cats visibility to RVR 5500.			

D-ATIS 124.75 125.625	SALT LAKE CITY APP CON 125.7 284.6	SALT LAKE CITY TOWER 118.3 257.8	GND CON 123.775 348.6
---------------------------------	--	--	---------------------------------



CATEGORY	A	B	C	D
RNP 0.20 DA		4472/24	250 (300-½)	
RNP 0.30 DA		4564/30	342 (400-¾)	

AUTHORIZATION REQUIRED



HIRL all Rwys
TDZL/RCLS Rwys 16L, 16R,
17, 34L, 34R and 35

SW-4, 14 MAY 2026 to 11 JUN 2026

SW-4, 14 MAY 2026 to 11 JUN 2026