

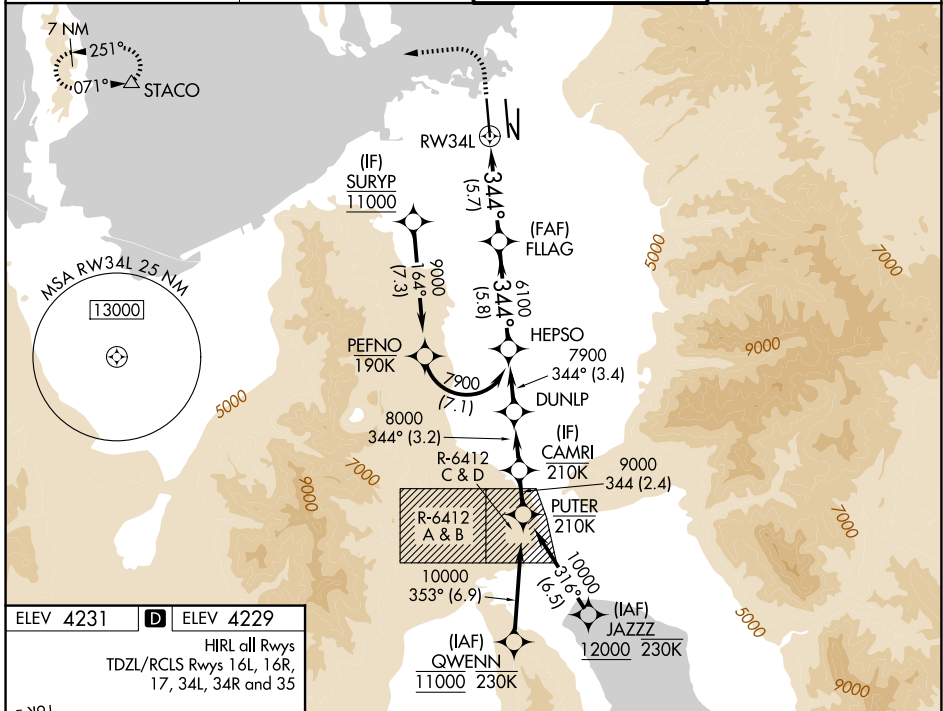
APP CRS <b>344°</b>	Rwy Ldg TDZE Apt Elev	<b>12000</b> <b>4229</b> <b>4231</b>
------------------------	-----------------------------	--

# RNAV (RNP) Z RWY 34L

SALT LAKE CITY INTL (SLC)

RNP AR APCH - GPS. Authorization required. From PEFNO: RF.	ALSF-2 	MISSED APPROACH: Climb to 4800 then climbing left turn to 8100 direct STACO and hold. *Missed approach requires minimum climb of 250 feet per NM to 4700.
--	------------	--

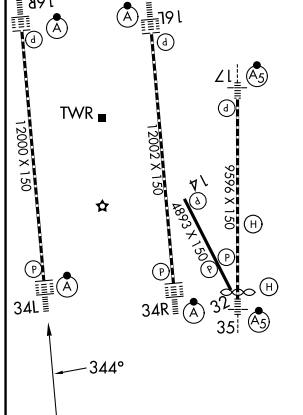
D-ATIS <b>124.75 125.625</b>	SALT LAKE CITY APP CON <b>125.7 284.6</b>	SALT LAKE CITY TOWER <b>132.65 336.4</b>	GND CON <b>123.775 348.6</b>
---------------------------------	--	---	---------------------------------



SW-4, 14 MAY 2026 to 11 JUN 2026

SW-4, 14 MAY 2026 to 11 JUN 2026

ELEV 4231	<b>D</b>	ELEV 4229
HIRL all Rwys TDZL/RCLS Rwys 16L, 16R, 17, 34L, 34R and 35		



4800	8100	STACO	VGSI and RNAV glidepath not coincident (VGSI Angle 3.00°/TCH 73).	HEP SO
See planview for multiple IF locations.				
RWY 34L		FLAG	6100	7900
			344°	
			6100	
		5.7 NM	5.8 NM	
GP 3.00° TCH 55				

CATEGORY	A	B	C	D
RNP 0.10 DA*		4490/24	261 (300-½)	
RNP 0.20 DA		4530/24	301 (300-½)	
RNP 0.30 DA		4643/40	414 (500-¾)	

**AUTHORIZATION REQUIRED**