

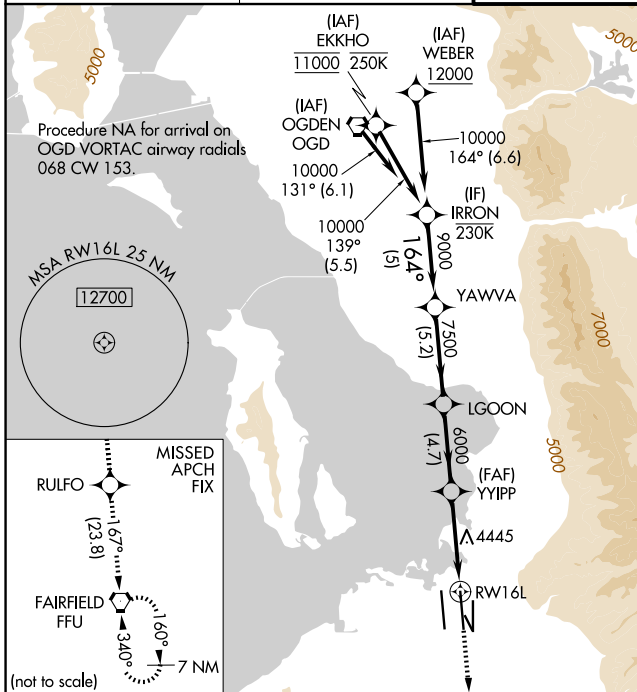
WAAS CH 70546 W16B	APP CRS 164°	Rwy Ldg TDZE Apt Elev	12002 4231 4231
--	------------------------	-----------------------------	--

RNAV (GPS) Y RWY 16L

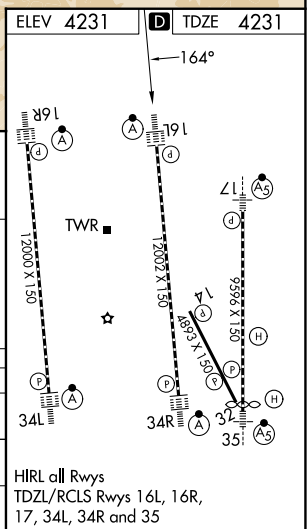
SALT LAKE CITY INTL (SLC)

RNP APCH - GPS.	ALSF-2	MISSED APPROACH: Climb to 10000 direct RULFO and on track 167° to FFU VORTAC and hold.
<p>▼ LNAV procedure NA during simultaneous operations. Simultaneous approach authorized. Use of FD or AP required during simultaneous operations. For uncompensated Baro-VNAV systems, LNAV/VNAV NA below -10°C or above 49°C. For inop ALS, increase LPV Cat E visibility to RVR 4000, increase LNAV/VNAV Cat A visibility to RVR 4500, increase Cats C/D visibility to RVR 5500, increase Cat E visibility to 6000, and increase LNAV Cat E visibility to 1 1/2 SM.</p>		

D-ATIS 124.75 125.625	SALT LAKE CITY APP CON 125.7 284.6	SALT LAKE CITY TOWER 119.05 257.8	GND CON 123.775 348.6
---------------------------------	--	---	---------------------------------



IRRON					RULFO					FFU				
10000					tr 167°									
GP 3.00°					1.4 NM to RWY 16L									
TCH 55														
5 NM					5.2 NM					4.7 NM				
5 NM					5.2 NM					4.7 NM				



CATEGORY	A	B	C	D	E
LPV DA	4431/18 200 (200-1/2)				
LNAV/VNAV DA	4537/24 306 (400-1/2)	4559/26 328 (400-1/2)	4574/30 343 (400-5/8)	4593/35 362 (400-5/8)	4634/40 403 (500-3/4)
LNAV MDA	4760/24	529 (600-1/2)	4760/55 529 (600-1)		

HIRL all Rwys
TDZL/RCLS Rwys 16L, 16R, 17, 34L, 34R and 35

SW-4, 14 MAY 2026 to 11 JUN 2026

SW-4, 14 MAY 2026 to 11 JUN 2026