

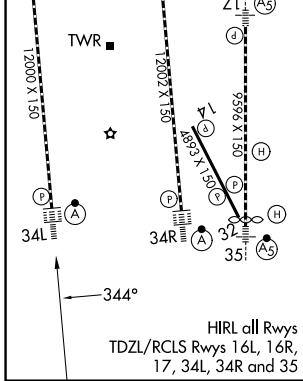
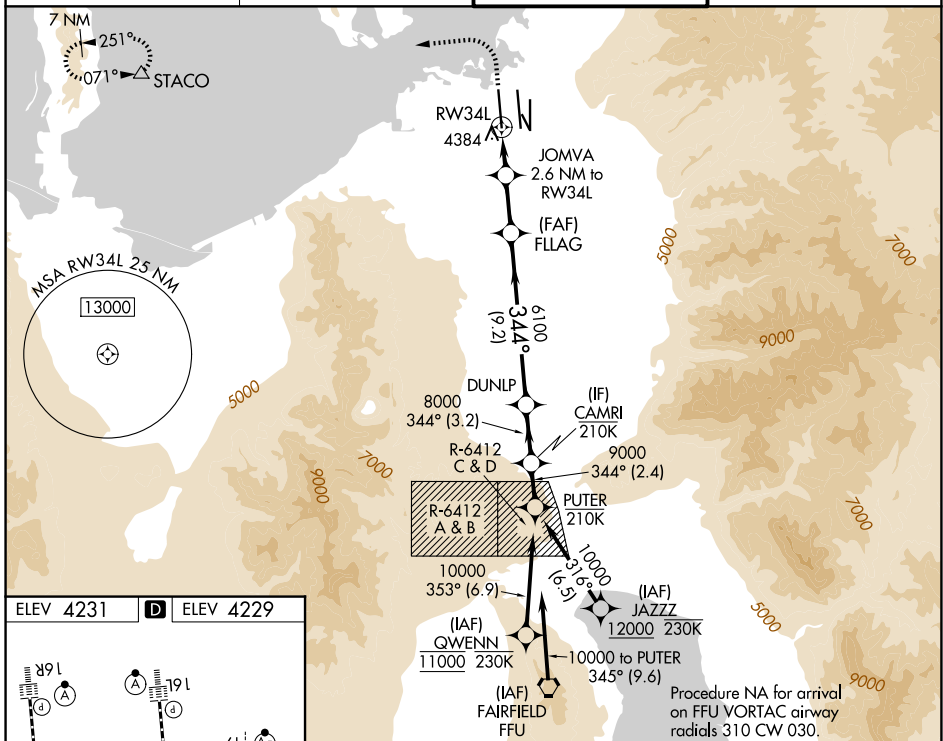
WAAS CH 70432 W34B	APP CRS 344°	Rwy Ldg TDZE 4229 Apt Elev 4231
--	------------------------	---

RNAV (GPS) Y RWY 34L

SALT LAKE CITY INTL (SLC)

RNP APCH - GPS.	ALSF-2 	MISSED APPROACH: Climb to 4800 then climbing left turn to 8100 direct STACO and hold.
<p>Simultaneous approach authorized. LNAV procedure NA during simultaneous operations. Use of FD or AP providing RNAV track guidance required during simultaneous operations. For uncompensated Baro-VNAV systems, LNAV/VNAV NA below -9°C or above 49°C. For inop ALS, increase LPV Cat E visibility to RVR 4000, LNAV/VNAV all Cats visibility to RVR 6000, LNAV Cat E visibility to 1/4 SM. Cat E restricted to USAF/USN aircraft.</p>		

D-ATIS 124.75 125.625	SALT LAKE CITY APP CON 125.7 284.6	SALT LAKE CITY TOWER 132.65 336.4	GND CON 123.775 348.6
---------------------------------	--	---	---------------------------------



4800	8100	STACO	VGSJ and RNAV glidepath not coincident (VGSJ Angle 3.00/TCH 73).	PUTER	
			FLAG	DUNLP	
		JOMVA 2.6 NM to RW34L	6100	CAMRI	
		1.1 NM to RW34L	5100	10000	
			6100	9000	
			344°	344°	
			1.1 NM	1.5 NM	
			3.1 NM	9.2 NM	
			3.2 NM	2.4 NM	
CATEGORY	A	B	C	D	E
LPV DA			4429/18	200 (200-1/2)	
LNAV/VNAV DA			4640/40	411 (500-3/4)	
LNAV MDA	4660/24	431 (500-1/2)		4660/40	431 (500-3/4)

SW-4, 14 MAY 2026 to 11 JUN 2026

SW-4, 14 MAY 2026 to 11 JUN 2026