

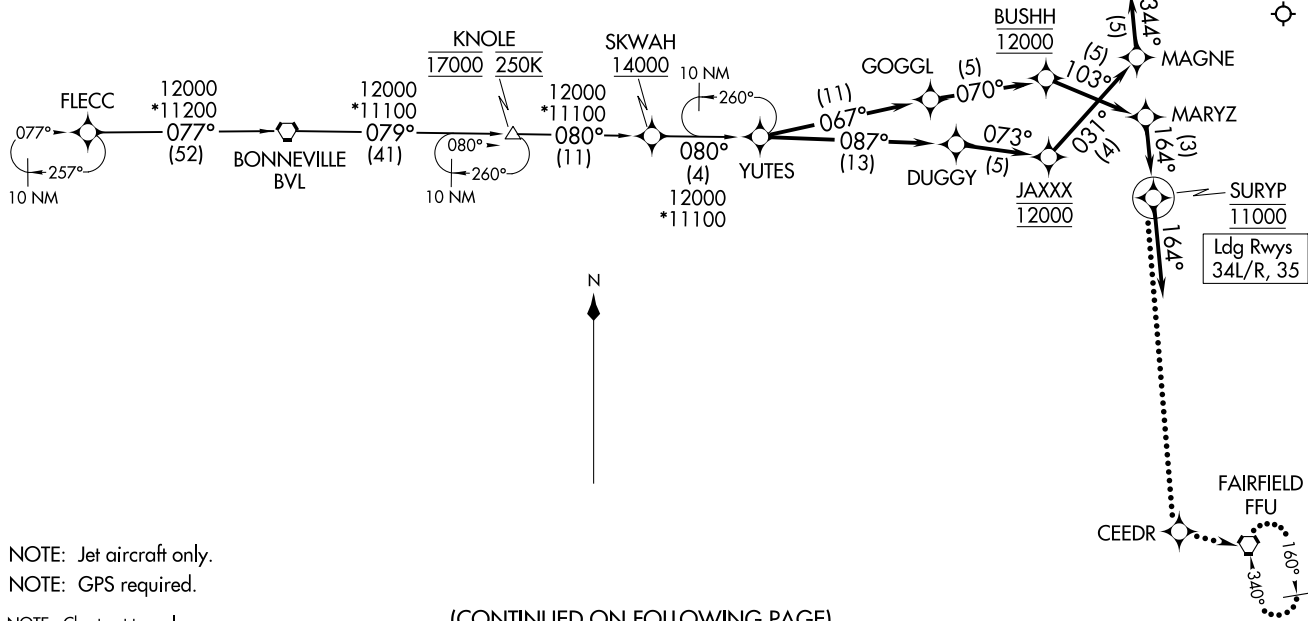
RNAV 1 - GPS.

RADAR required.

SALT LAKE CITY APP CON  
128.1 307.05  
D-ATIS  
124.75 125.625

YUTES TWO ARRIVAL (RNAV)  
(YUTES, YUTES2) 19MAY26

SALT LAKE CITY, UTAH  
SALT LAKE CITY INTL (SLC)



(CONTINUED ON FOLLOWING PAGE)

(YUTES, YUTES2) 26078  
YUTES TWO ARRIVAL (RNAV)

AL-365 (FAA)

SALT LAKE CITY INTL (SLC)  
SALT LAKE CITY, UTAH

ARRIVAL ROUTE DESCRIPTION

FLECC TRANSITION (FLECC.YUTES2)

LANDING RUNWAYS 16L/R: From YUTES on track 087° to DUGGY, then on track 073° to cross JAXXX at 12000, then on track 031° to MAGNE, then on track 344° to cross LAWVA at 11000, then on track 344°. Expect RADAR vectors for the RNAV (RNP) Z Rwy 16R approach or RADAR vectors to 16L/R final approach course.

LANDING RUNWAY 17: From YUTES on track 087° to DUGGY, then on track 073° to cross JAXXX at 12000, then on track 031° to MAGNE, then on track 344° to cross LAWVA at 11000, then on track 344°. Expect RADAR vectors to final approach course.

LANDING RUNWAYS 34L/R: From YUTES on track 067° to GOGGL, then on track 070° to cross BUSHH at 12000, then on track 103° to MARYZ, then on track 164° to cross SURYP at 11000, then on track 164°. Expect RADAR vectors for the RNAV (RNP) Z RWY 34L approach or RADAR vectors to final approach course.

LANDING RUNWAY 35: From YUTES on track 067° to GOGGL, then on track 070° to cross BUSHH at 12000, then on track 103° to MARYZ, then on track 164° to cross SURYP at 11000, then on track 164°. Expect RADAR vectors to final approach course.

LOST COMMUNICATIONS

LANDING NORTH: After SURYP proceed to CEEDR, then left turn to FFU and hold at 11000.

LANDING SOUTH: After LAWVA proceed to RROY, then left turn to MOINT and hold at 12000.

SW-4, 14 MAY 2026 to 11 JUN 2026

SW-4, 14 MAY 2026 to 11 JUN 2026