

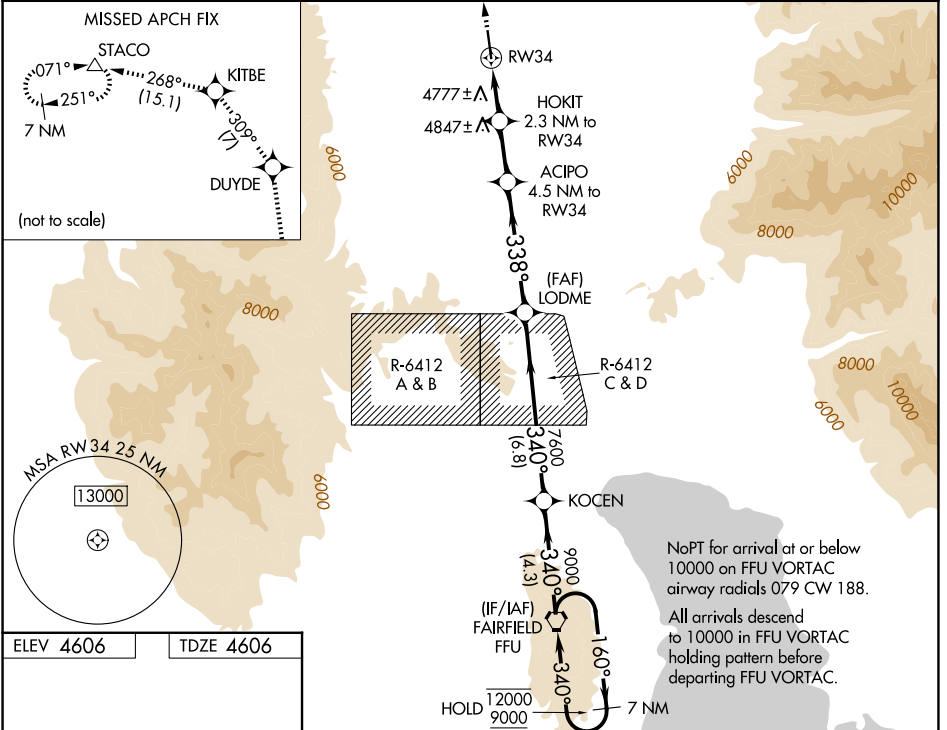
WAAS CH 82740 W34A	APP CRS 338°	Rwy Ldg TDZE Apt Elev	5862 4606 4606
--	------------------------	-----------------------------	---

RNAV (GPS) RWY 34

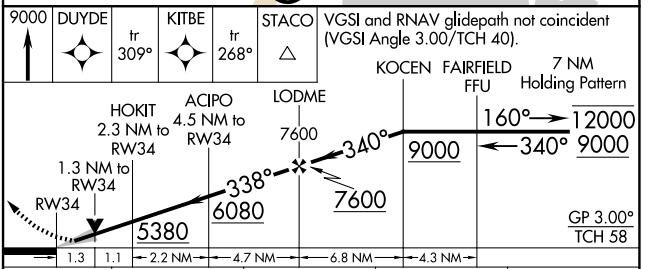
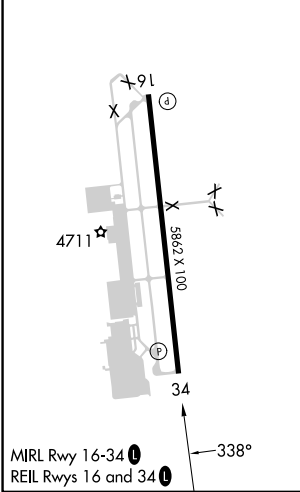
SOUTH VALLEY RGNL (SVR)

RNP APCH - GPS.	MISSED APPROACH: Climb to 9000 direct DUYDE and on track 309° to KITBE and on track 268° to STACO and hold.
<p>⚠ VDP NA when using SLC altimeter setting. Baro-VNAV NA. When local altimeter setting not received, use SLC altimeter setting and increase all LPV DA to 4956 feet and all visibilities ½ SM. Increase LNAV/VNAV DA to 5159 feet and all visibilities ¼ SM. Increase all MDAs 80 feet and LNAV visibility Cat C/D ½ SM, and Circling visibility Cat B ¼ SM.</p>	

AWOS-3PT 134.425	SALT LAKE CITY APP CON 120.9 322.3	CLNC DEL 127.0	UNICOM 122.7 (CTAF) 0
----------------------------	--	--------------------------	---------------------------------



ELEV 4606	TDZE 4606
-----------	-----------



9000	DUYDE	KITBE	STACO	VGSI and RNAV glidepath not coincident (VGSI Angle 3.00/TCH 40).
↑	tr 309°	tr 268°	△	KOCEN FAIRFIELD FFU Holding Pattern
HOKIT 2.3 NM to RW34	ACIPO 4.5 NM to RW34	LODME 7600	340°	160° → 12000
1.3 NM to RW34	5380	6080	340°	← 340° 9000
1.3	1.1	2.2 NM	4.7 NM	6.8 NM
4.3 NM	GP 3.00° TCH 58			
CATEGORY	A	B	C	D
LPV DA	4881-7/8 275 (300-7/8)			
LNAV/VNAV DA	5084-1 3/8 478 (500-1 3/8)			
LNAV MDA	5040-1	434 (500-1)	5040-1 1/4	434 (500-1 1/4)
CIRCLING	5180-1 574 (600-1)	5360-1 754 (800-1)	5780-3 1174 (1200-3)	6040-3 1434 (1500-3)

SW-4, 14 MAY 2026 to 11 JUN 2026

SW-4, 14 MAY 2026 to 11 JUN 2026