

(SVALY2.FFU) 25163

# SOUTH VALLEY TWO DEPARTURE (RNAV)

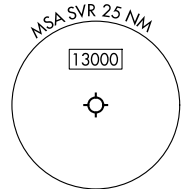
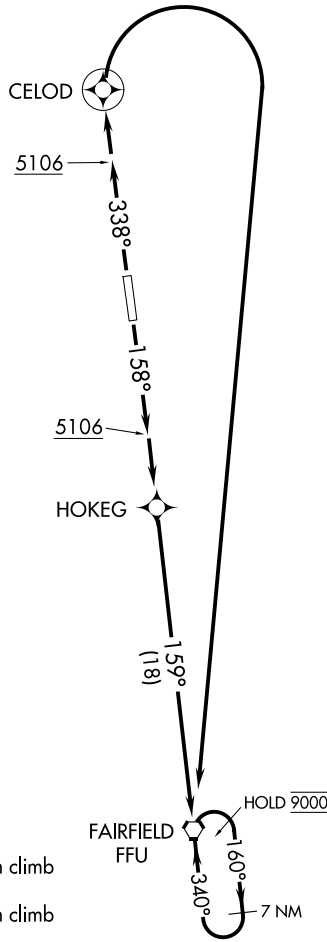
AL-366 (FAA)

SOUTH VALLEY RGNL (SVR)  
SALT LAKE CITY, UTAH

SALT LAKE CITY DEP CON  
120.9 322.3  
CLNC DEL  
127.0  
UNICOM  
122.7 (CTAF)  
AWOS-3PT  
134.425

RNAV 1 - GPS.

**TOP ALTITUDE:  
9000**



NOTE: Chart not to scale.

### TAKEOFF MINIMUMS

Rwy 16: Standard with minimum climb of 300'/NM to 7800.  
Rwy 34: Standard with minimum climb of 495'/NM to 9000.

### DEPARTURE ROUTE DESCRIPTION

TAKEOFF RUNWAY 16: Climb heading 158° to 5106, then climb to 9000 direct HOKEG, and on track 159° to FFU VORTAC and hold, thence. . . .

TAKEOFF RUNWAY 34: Climb heading 338° to 5106, then climb to 9000 direct CELOD, and right turn direct FFU VORTAC and hold, thence. . . .

. . . maintain 9000. Expect further clearance to filed altitude and route within 10 minutes of departure.

# SOUTH VALLEY TWO DEPARTURE (RNAV)

(SVALY2.FFU) 17APR25

SALT LAKE CITY, UTAH  
SOUTH VALLEY RGNL (SVR)

SW-4, 14 MAY 2026 to 11 JUN 2026

SW-4, 14 MAY 2026 to 11 JUN 2026