

# HI-VOR Z or TACAN RWY 21

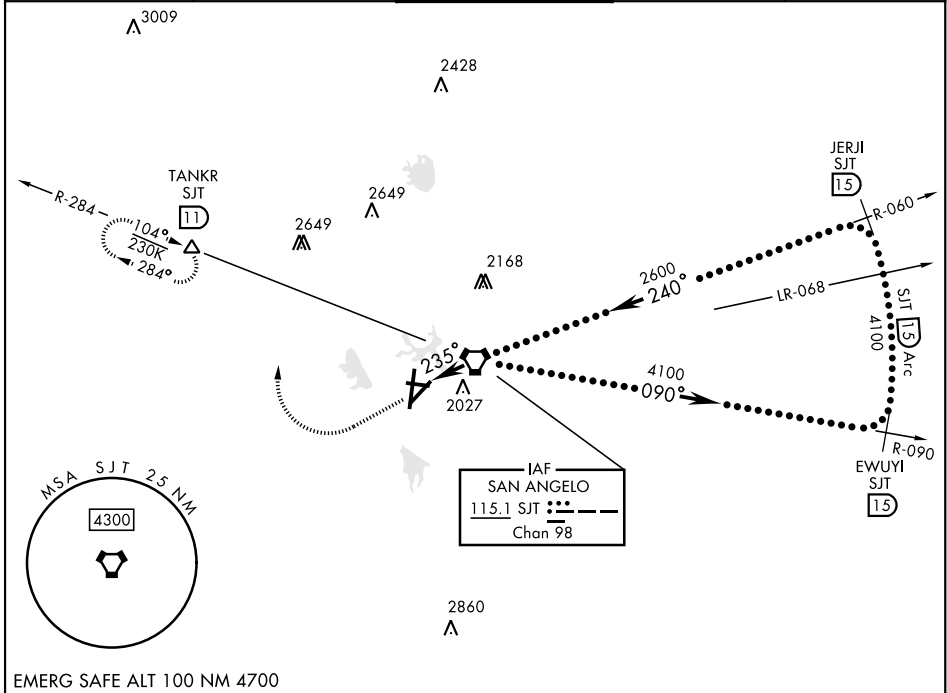
VORTAC SJT <b>115.1</b> Chan <b>98</b>	APCH CRS <b>235°</b>	Rwy Idg TDZE <b>1906</b> Arpt Elev <b>1919</b>
--	-------------------------	--

[USAF] SAN ANGELO RGNL/MATHIS FLD (KSJT)

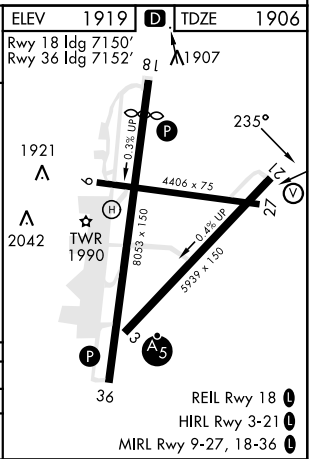
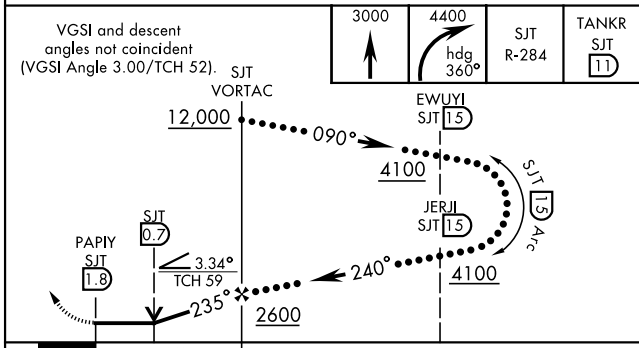
DME required  
 \*Circling not authorized for CAT D W of Rwy 18-36.

MISSED APPROACH: Climb to 3000 then climbing right turn to 4400 on heading 360° and SJT VORTAC R-284 to TANKR INT/11 DME and hold, continue climb-in-hold to 4400.

ATIS <b>128.45 319.0</b>	SAN ANGELO APP CON ★ <b>125.35 354.1</b>	MATHIS TOWER ★ <b>118.3</b> (CTAF) <b>284.7</b>	GND CON <b>121.9 348.6</b>	UNICOM <b>122.95</b>
-----------------------------	---	--	-------------------------------	-------------------------



EMERG SAFE ALT 100 NM 4700



CATEGORY	C	D	E
	2300-1 1/8	394 (400-1 1/8)	
S-21	2500-1 1/2	2580-2	NOT AUTHORIZED
CIRCLING*	581 (600-1 1/2)	661 (700-2)	

SAN ANGELO, TEXAS 31°21'N-100°30'W SAN ANGELO RGNL/MATHIS FLD (KSJT)

Amtd 2 02DEC21

# HI-VOR Z or TACAN RWY 21

SC-3, 14 MAY 2026 to 11 JUN 2026

SC-3, 14 MAY 2026 to 11 JUN 2026