

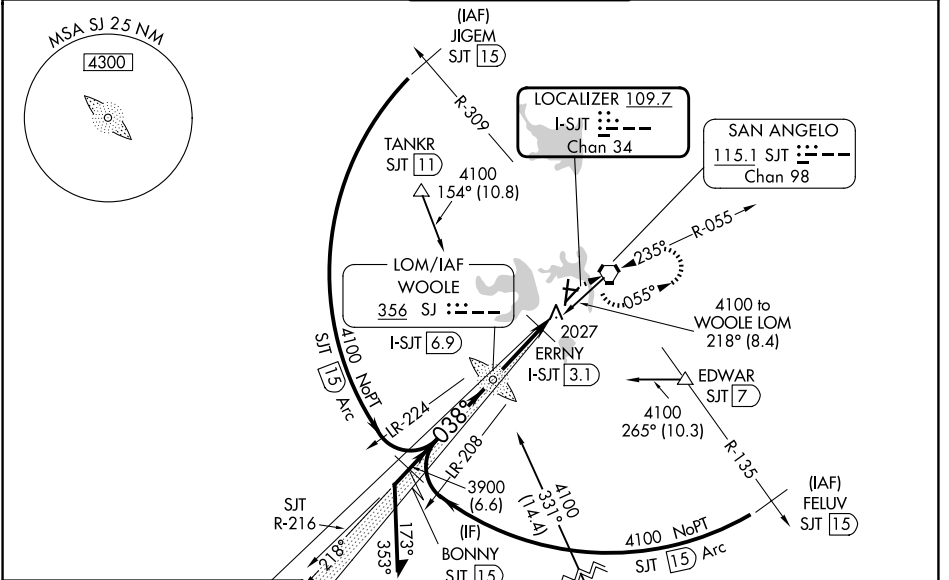
LOC/DME I-SJT <b>109.7</b> Chan <b>34</b>	APP CRS <b>038°</b>	Rwy Ldg <b>5940</b> TDZE <b>1917</b> Apt Elev <b>1919</b>
---	------------------------	---

# ILS Y or LOC Y RWY 3

SAN ANGELO RGNL/MATHIS FLD (SJT)

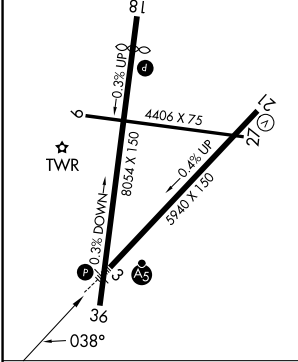
ADF or DME required for procedure entry.  Autopilot coupled approach NA below 2685. For inop ALS, increase S-ILS 3 Cat E visibility to RVR 4000, S-LOC 3 Cat C/D/E visibility to 2 SM. Circling NA for Cat E west of Rwy 18-36. ERRNY DME minimums: For Inop ALS, increase S-LOC 3 Cat C/D/E visibility to RVR 5500. # RVR 1800 authorized with use of FD or AP or HUD to DA.	MALS R 	MISSED APPROACH: Climb to 4000 then right turn direct SJT VORTAC and hold.
--	------------	--

ATIS <b>128.45 319.0</b>	SAN ANGELO APP CON * <b>125.35 354.1</b>	MATHIS TOWER * <b>118.3 (CTAF) 284.7</b>	GND CON <b>121.9 348.6</b>	UNICOM <b>122.95</b>
-----------------------------	---	---	-------------------------------	-------------------------

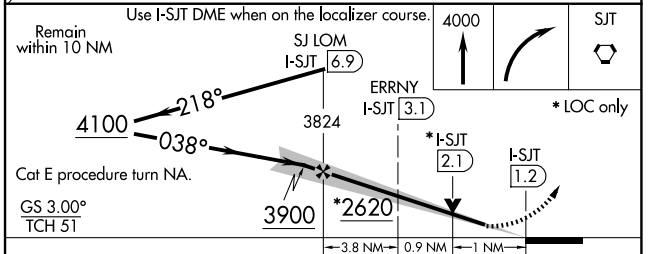


ELEV 1919	<b>D</b> TDZE 1917
-----------	--------------------

MIRL Rws 9-27 and 18-36  
HIRL Rwy 3-21  
REIL Rwy 18



FAF to MAP 5.7 NM					
Knots	60	90	120	150	180
Min:Sec	5:42	3:48	2:51	2:17	1:54



CATEGORY	A	B	C	D	E
S-ILS 3 #	2117/24 200 (200-1/2)				
S-LOC 3	2620/24	703 (800-1/2)	2620-1 3/8	703 (800-1 3/8)	
CIRCLING	2620-1	701 (800-1)	2620-2 701 (800-2)	2700-2 1/2 781 (800-2 1/2)	2700-2 3/4 781 (800-2 3/4)
ERRNY DME MINIMUMS					
S-LOC 3	2300/24	383 (400-1/2)	2300/35	383 (400-5/8)	
CIRCLING	2360-1 441 (500-1)	2380-1 461 (500-1)	2500-1 1/2 581 (600-1 1/2)	2700-2 1/2 781 (800-2 1/2)	2700-2 3/4 781 (800-2 3/4)