

# NDB RWY 3

SAN ANGELO RGNL/MATHIS FLD (SJT)

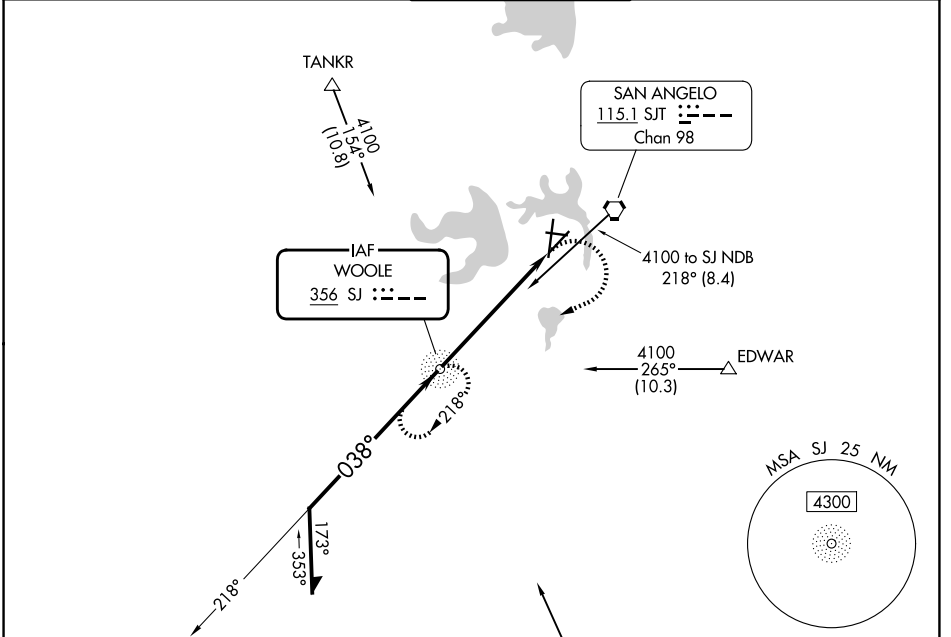
NDB SJ <b>356</b>	APP CRS <b>038°</b>	Rwy Ldg TDZE Apt Elev	<b>5940</b> <b>1917</b> <b>1919</b>
----------------------	------------------------	-----------------------------	---

**ASR**  
For inop ALS, increase Cat A/B visibility to RVR 5500, and Cat C/D to 2 SM.

**MALSR**  
**AS**

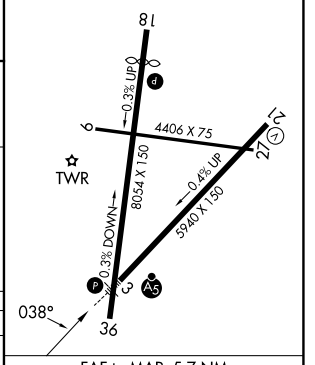
**MISSED APPROACH:** Climbing right turn to 4000 direct SJ NDB and hold.

ATIS <b>128.45 319.0</b>	SAN ANGELO APP CON ★ <b>125.35 354.1</b>	MATHIS TOWER ★ <b>118.3 (CTAF) 284.7</b>	GND CON <b>121.9 348.6</b>	UNICOM <b>122.95</b>
-----------------------------	---	---	-------------------------------	-------------------------



ELEV 1919	<b>D</b>	TDZE 1917
-----------	----------	-----------

MIRL Rwy 9-27 and 18-36  
HIRL Rwy 3-21  
REIL Rwy 18



Remain within 10 NM	SJ NDB	4000	SJ
4100	218°	3900	3.18° TCH 45
038°	5.7 NM		

CATEGORY	A	B	C	D
S-3	2640/40	723 (800-¾)	2640-1½	723 (800-1½)
CIRCLING	2640-1	721 (800-1)	2640-2	2700-2½ 781 (800-2½)

FAF to MAP 5.7 NM					
Knots	60	90	120	150	180
Min:Sec	5:42	3:48	2:51	2:17	1:54

# NDB RWY 3

SC-3, 14 MAY 2026 to 11 JUN 2026

SC-3, 14 MAY 2026 to 11 JUN 2026