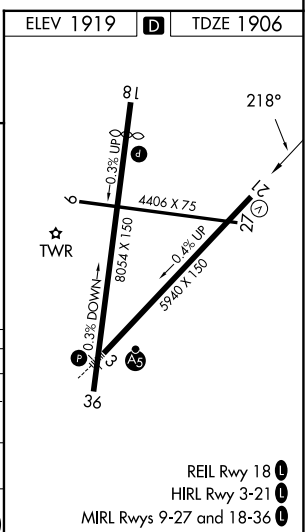
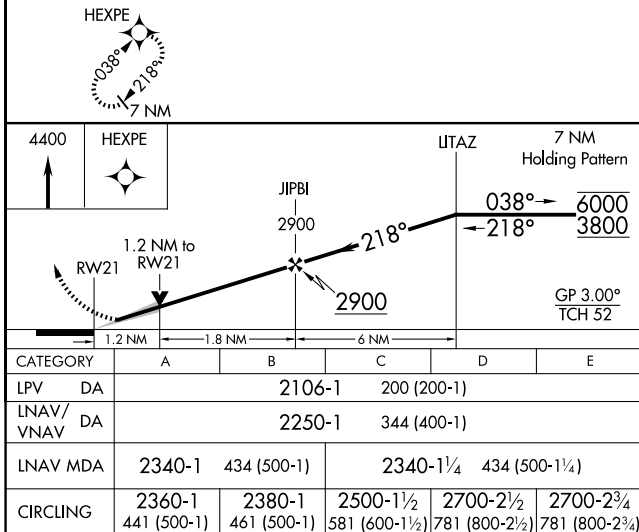
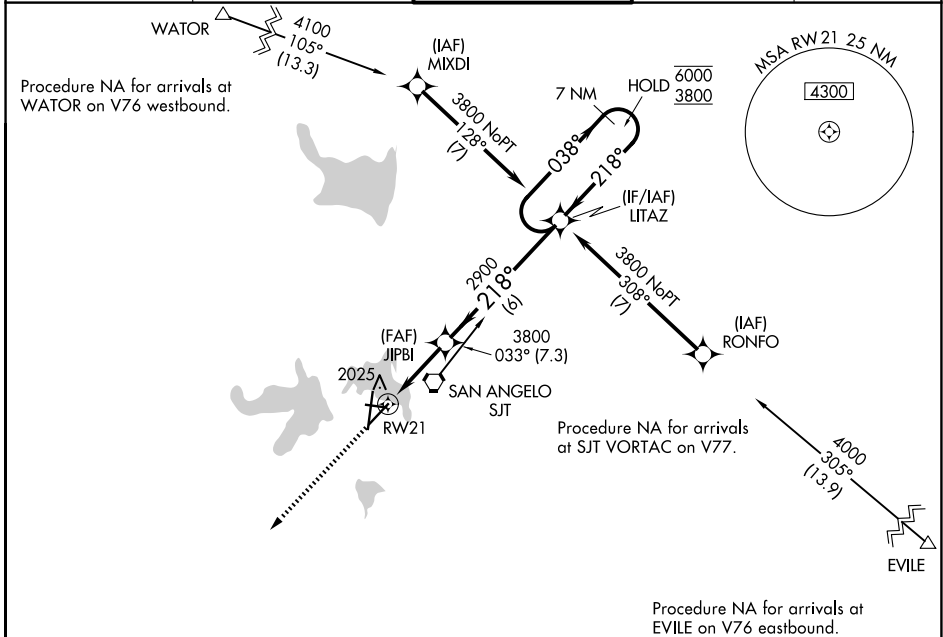


WAAS CH 81817 W21A	APP CRS 218°	Rwy Ldg TDZE 1906 Apt Elev 1919
--	------------------------	---

RNAV (GPS) RWY 21

SAN ANGELO RGNL/MATHIS FLD (SJT)

RNP APCH - GPS.		MISSED APPROACH: Climb to 4400 direct HEXPE and hold.		
<p>ASR For uncompensated Baro-VNAV systems, LNAV/VNAV NA below -8°C or above 54°C. Circling NA for Cat E west of Rwy 18-36.</p>				
ATIS 128.45 319.0	SAN ANGELO APP CON ★ 125.35 354.1	MATHIS TOWER ★ 118.3 (CTAF) 284.7	GND CON 121.9 348.6	UNICOM 122.95



SC-3, 14 MAY 2026 to 11 JUN 2026

SC-3, 14 MAY 2026 to 11 JUN 2026