

# BOWIE EIGHT DEPARTURE

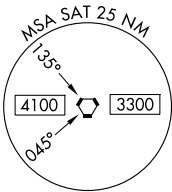
SAN ANTONIO DEP CON  
 125.7 290.225 (Rwys 13, 22, 31)  
 127.1 269.1 (Rwy 4 CORPUS CHRISTI Transition)  
 125.1 307.0 (Rwy 4 LAREDO Transition)  
 D-ATIS  
 118.9  
 CLNC DEL  
 126.7  
 CPDLC  
 GND CON  
 121.9 348.6  
 SAN ANTONIO TOWER  
 119.8 257.8

RADAR required.  
 DME required.

**TOP ALTITUDE:  
 5000**

SAN ANTONIO  
 116.8 SAT  
 Chan 115

TAKEOFF MINIMUMS  
 Rwys 4, 13L/R, 22, 31L/R: Standard.

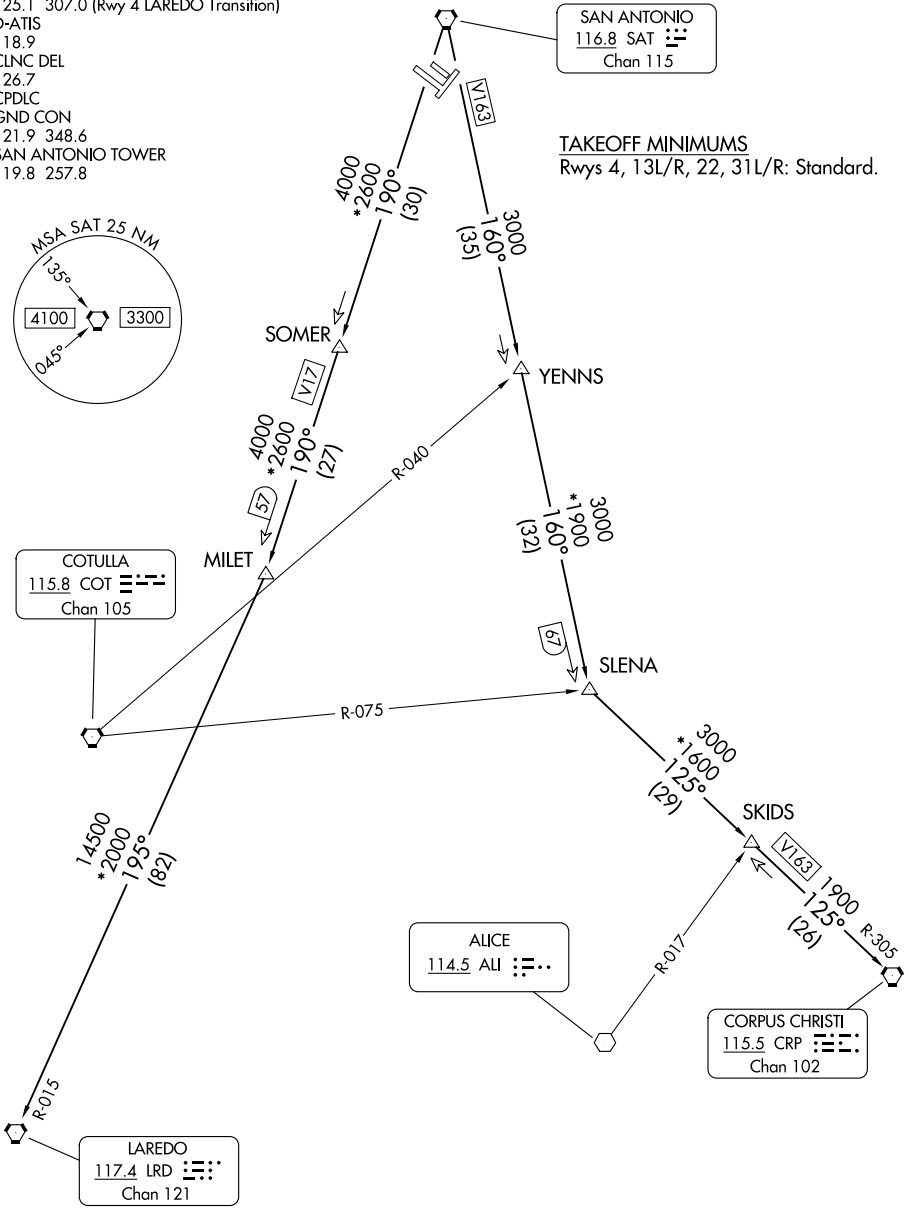


COTULLA  
 115.8 COT  
 Chan 105

ALICE  
 114.5 ALI  
 Chan 101

CORPUS CHRISTI  
 115.5 CRP  
 Chan 102

LAREDO  
 117.4 LRD  
 Chan 121



SC-3, 14 MAY 2026 to 11 JUN 2026

SC-3, 14 MAY 2026 to 11 JUN 2026

NOTE: Chart not to scale.

(CONTINUED ON FOLLOWING PAGE)

# BOWIE EIGHT DEPARTURE

# BOWIE EIGHT DEPARTURE



## DEPARTURE ROUTE DESCRIPTION

TAKEOFF RUNWAYS 4, 13L/R, 22, 31L/R: Climb on assigned heading for vectors to SAT VORTAC. Then on transition route, expect filed altitude 10 minutes after departure. Maintain 5000.

CORPUS CHRISTI TRANSITION (BOWIE8.CRP): From over SAT VORTAC on SAT R-160 to SLENA, then on CRP R-305 to CRP VORTAC.

LAREDO TRANSITION (BOWIE8.LRD): From over SAT VORTAC on SAT R-190 to MILET, then on LRD R-015 to LRD VORTAC.

SC-3, 14 MAY 2026 to 11 JUN 2026

SC-3, 14 MAY 2026 to 11 JUN 2026