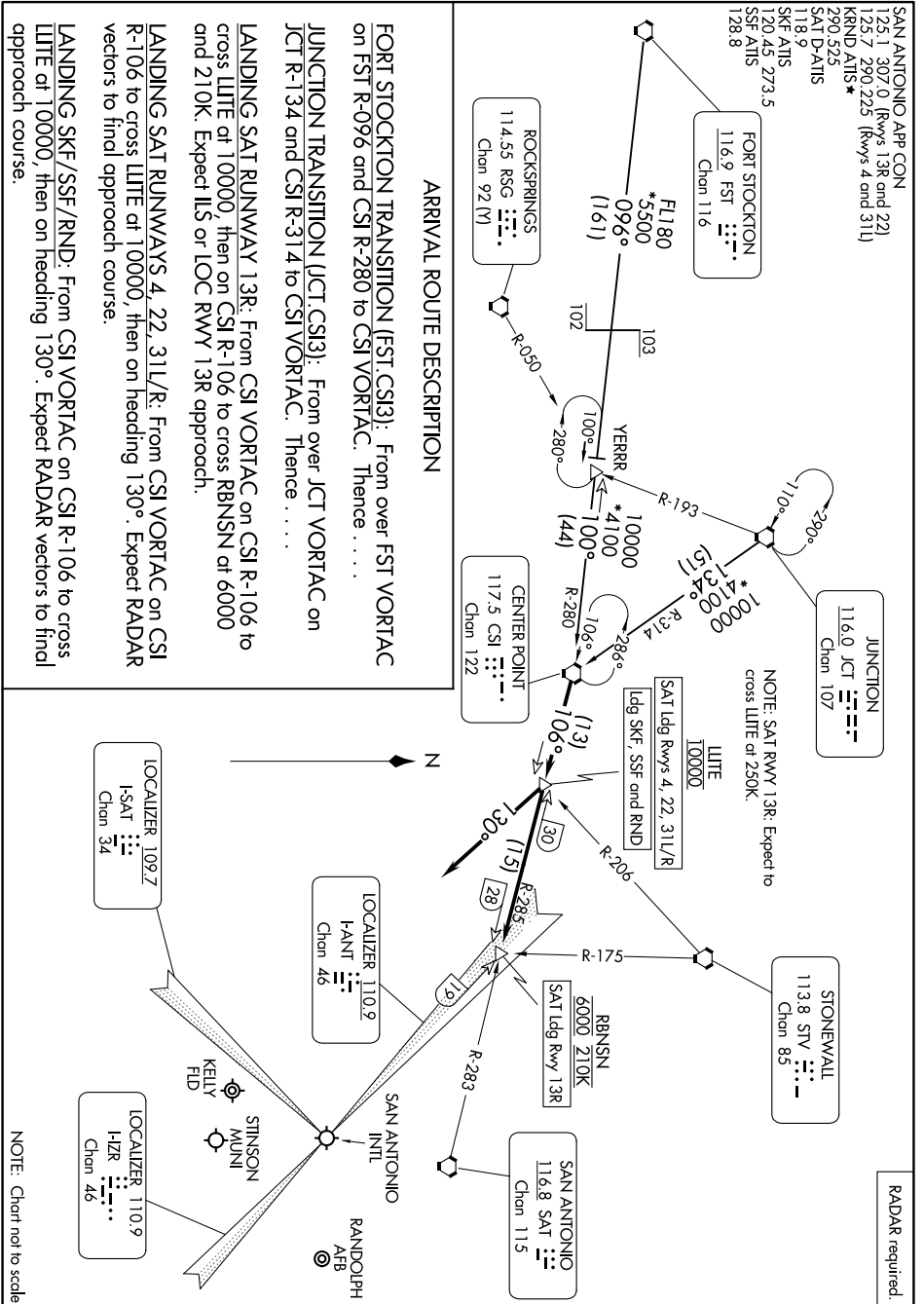


CENTERPOINT THREE ARRIVAL

SAN ANTONIO, TEXAS



ARRIVAL ROUTE DESCRIPTION

FORT STOCKTON TRANSITION (FST.CS13): From over FST VORTAC on FST R-096 and CSI R-280 to CSI VORTAC. Thence, . . .

JUNCTION TRANSITION (JCT.CS13): From over JCT VORTAC on JCT R-134 and CSI R-314 to CSI VORTAC. Thence, . . .

LANDING SAT RUNWAY 13R: From CSI VORTAC on CSI R-106 to cross LITE at 10000, then on heading 130°. Expect RADAR vectors to final approach course.

LANDING SAT RUNWAYS 4, 22, 31L/R: From CSI VORTAC on CSI R-106 to cross LITE at 10000, then on heading 130°. Expect RADAR vectors to final approach course.

LANDING SKF/SSF/RND: From CSI VORTAC on CSI R-106 to cross LITE at 10000, then on heading 130°. Expect RADAR vectors to final approach course.

SAN ANTONIO APP CON:
 1251 1307.0 (Rwys 13R and 22L)
 1257 290.223 (Rwys 4 and 31L)
 RND AITS*
 290.525
 SAT D-AITS
 118.9
 SKF AITS
 120.45 273.5
 SSF AITS
 128.8

FORT STOCKTON
 116.9 FST
 Chan 116

ROCKSPRINGS
 114.55 RSG
 Chan 92 M

JUNCTION
 116.0 JCT
 Chan 107

CENTERPOINT
 117.5 CSI
 Chan 122

STONEMWALL
 113.8 STW
 Chan 85

SAN ANTONIO
 116.8 SAT
 Chan 115

LOCALIZER 109.7
 I-SAT
 Chan 34

LOCALIZER 110.9
 I-ANT
 Chan 46

LOCALIZER 110.9
 I-ZR
 Chan 46

NOTE: SAT RWY 13R: Expect to cross LITE at 250K.

NOTE: SAT LITE at 10000.

NOTE: RADAR required.

NOTE: Chart not to scale.

2025 JUN 11 09 2025 MAY 14 11 30-SC

SC-3, 14 MAY 2026 to 11 JUN 2026

CENTERPOINT THREE ARRIVAL

SAN ANTONIO, TEXAS