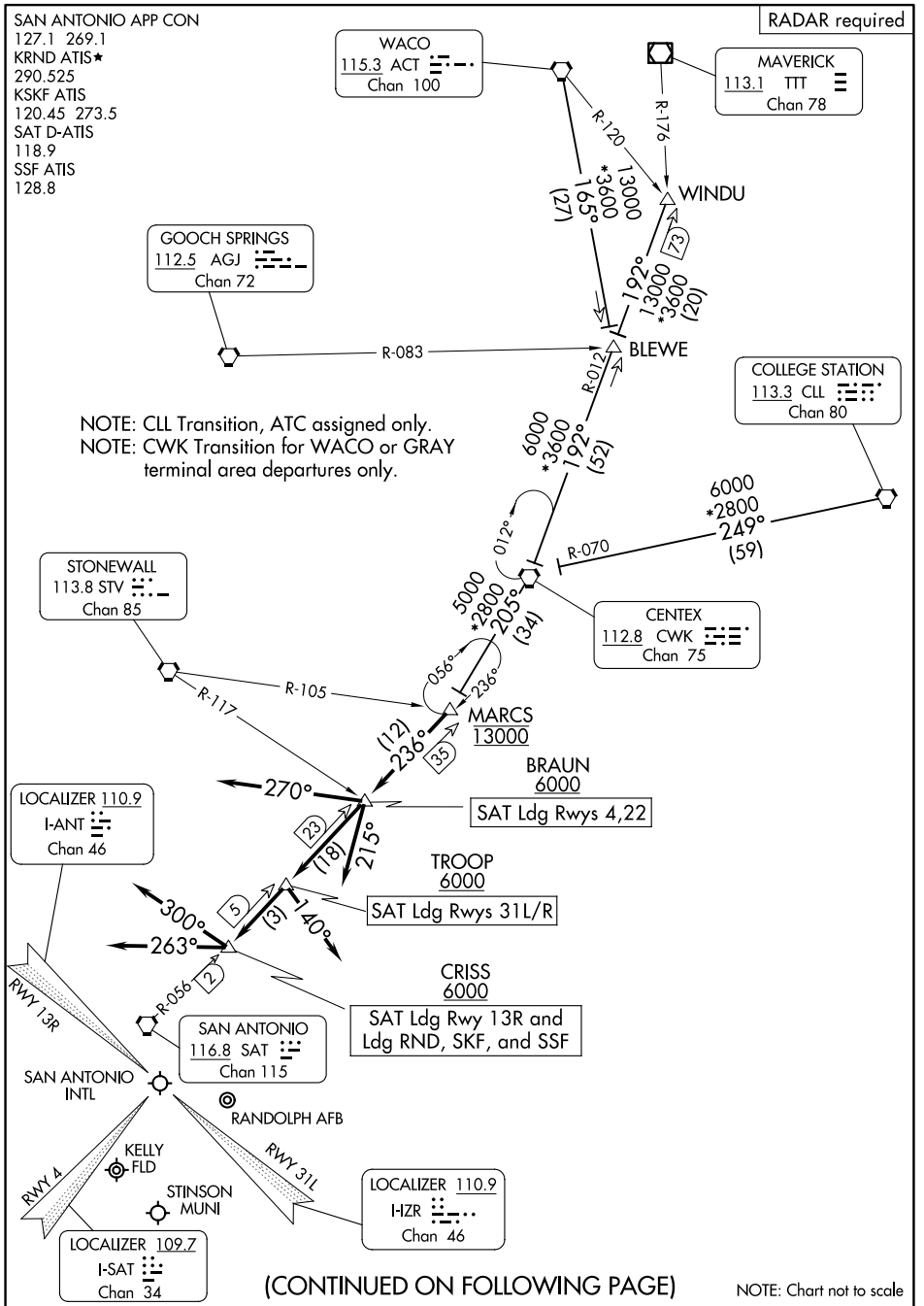


MARCS TWO ARRIVAL



(CONTINUED ON FOLLOWING PAGE)

NOTE: Chart not to scale

MARCS TWO ARRIVAL

SC-3, 14 MAY 2026 to 11 JUN 2026

SC-3, 14 MAY 2026 to 11 JUN 2026

ARRIVAL ROUTE DESCRIPTION

BLEWE TRANSITION (BLEWE.MARCS2): From over BLEWE on CWK R-012 to CWK VORTAC, then on CWK R-205 to MARCS. Thence. . .

CENTEX TRANSITION (CWK.MARCS2): From over CWK VORTAC on CWK R-205 to MARCS. Thence. . . .

COLLEGE STATION TRANSITION (CLL.MARCS2): From over CLL VORTAC on CLL R-249 and CWK R-070 to CWK VORTAC, then on CWK R-205 to MARCS. Thence. . . .

WACO TRANSITION (ACT.MARCS2): From over ACT VORTAC on ACT R-165 to BLEWE, then on CWK R-012 to CWK VORTAC, then on CWK R-205 to MARCS. Thence. . . .

WINDU TRANSITION (WINDU.MARCS2): From over WINDU on CWK R-012 to CWK VORTAC, then on CWK R-205 to MARCS. Thence. . . .

LANDING SAT RUNWAY 4:

. . . .From MARCS on SAT R-056 to cross BRAUN at or above 6000, then on heading 215°. Expect RADAR vectors to final approach course.

LANDING SAT RUNWAY 13R:

. . . .From MARCS on SAT R-056 to cross CRISS at or above 6000, then on heading 300°. Expect RADAR vectors to final approach course.

LANDING SAT RUNWAY 22:

. . . .From MARCS on SAT R-056 to cross BRAUN at or above 6000, then on heading 270°. Expect RADAR vectors to final approach course.

LANDING SAT RUNWAYS 31L/R:

. . . .From MARCS on SAT R-056 to cross TROOP at or above 6000, then on heading 140°. Expect RADAR vectors to final approach course.

LANDING RND/SKF/SSF:

. . . .From MARCS on SAT R-056 to cross CRISS at or above 6000, then on heading 263°. Expect RADAR vectors to final approach course.

SC-3, 14 MAY 2026 to 11 JUN 2026

SC-3, 14 MAY 2026 to 11 JUN 2026